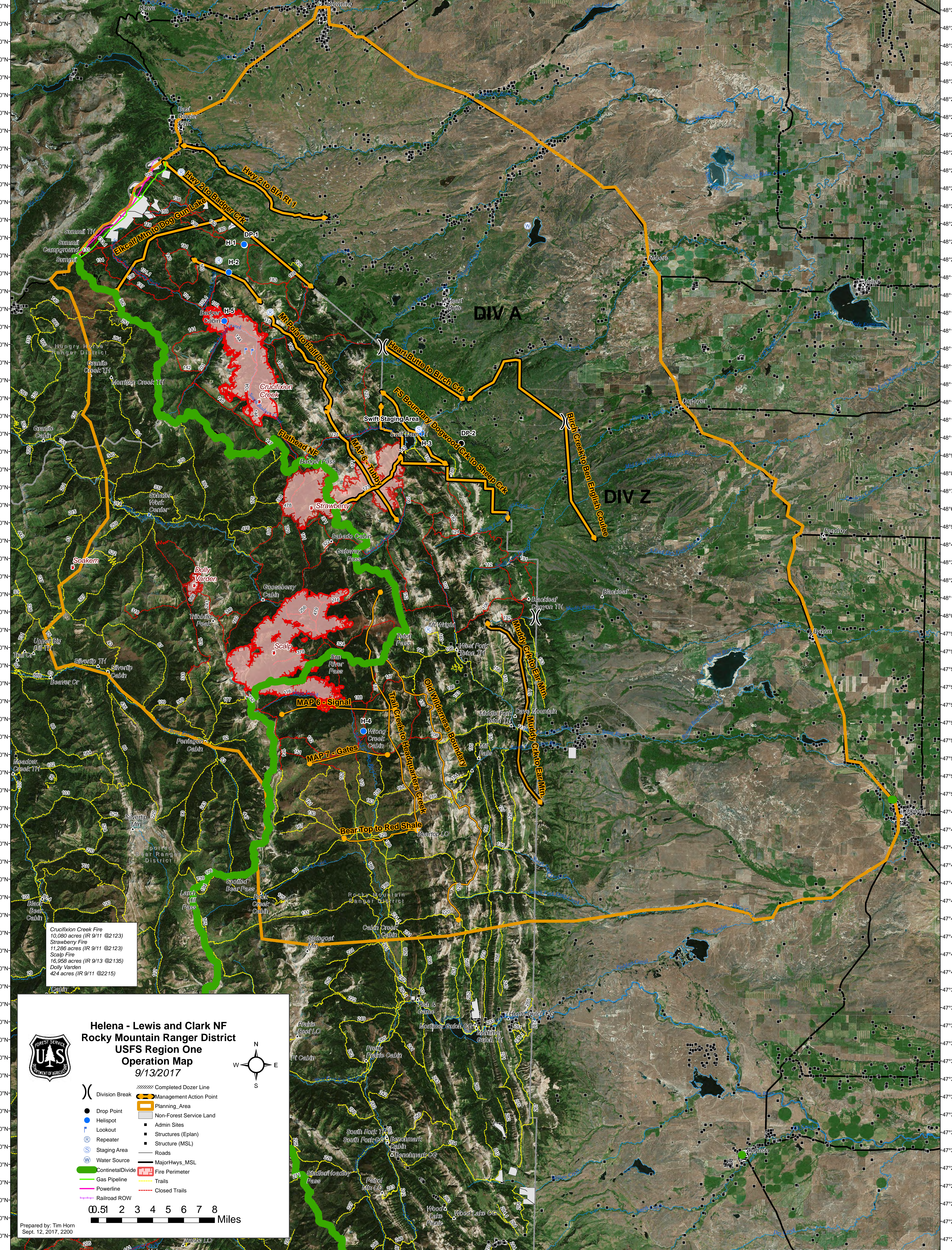


113°27'0"W 113°24'0"W 113°21'0"W 113°18'0"W 113°15'0"W 113°12'0"W 113°9'0"W 113°6'0"W 113°3'0"W 113°0'0"W 112°57'0"W 112°54'0"W 112°51'0"W 112°48'0"W 112°45'0"W 112°42'0"W 112°39'0"W 112°36'0"W 112°33'0"W 112°30'0"W 112°27'0"W 112°24'0"W 112°21'0"W 112°18'0"W 112°15'0"W 112°12'0"W 112°9'0"W



Crucifixion Creek Fire
10,080 acres (IR 9/11 @2123)
Strawberry Fire
11,286 acres (IR 9/11 @2123)
Scalp Fire
16,950 acres (IR 9/13 @2135)
Dolly Varden
424 acres (IR 9/11 @2215)

USFS
Helena - Lewis and Clark NF
Rocky Mountain Ranger District
USFS Region One
Operation Map
9/13/2017

(X) Division Break
 (●) Drop Point
 (H) Helispot
 (L) Lookout
 (R) Repeater
 (S) Staging Area
 (W) Water Source
 (---) Continental Divide
 (---) Gas Pipeline
 (---) Powerline
 (---) Railroad ROW

(---) Completed Dozer Line
 (---) Management Action Point
 (---) Planning Area
 (---) Non-Forest Service Land
 (■) Admin Sites
 (■) Structures (Eplan)
 (■) Structure (MSL)
 (---) Roads
 (---) Major Hwys_MSL
 (---) Fire Perimeter
 (---) Trails
 (---) Closed Trails

0 0.51 2 3 4 5 6 7 8 Miles

Prepared by: Tim Horn
Sept. 12, 2017, 2200

113°24'0"W 113°21'0"W 113°18'0"W 113°15'0"W 113°9'0"W 113°3'0"W 113°0'0"W 112°57'0"W 112°54'0"W 112°51'0"W 112°48'0"W 112°45'0"W 112°42'0"W 112°39'0"W 112°36'0"W 112°33'0"W 112°30'0"W 112°27'0"W 112°24'0"W 112°21'0"W 112°18'0"W 112°15'0"W 112°12'0"W 112°9'0"W