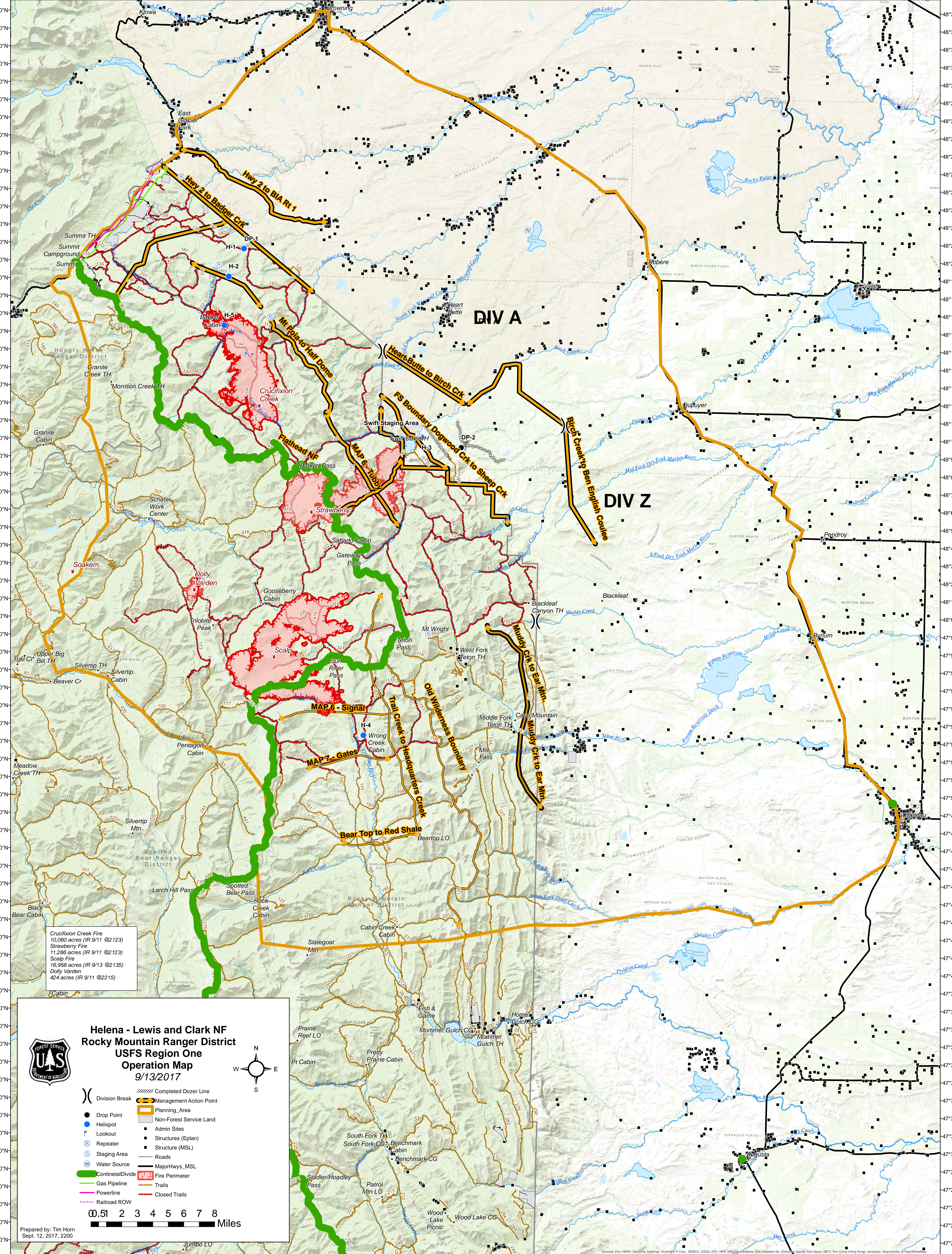


113°27'0"W 113°24'0"W 113°21'0"W 113°18'0"W 113°15'0"W 113°12'0"W 113°9'0"W 113°6'0"W 113°3'0"W 113°0'0"W 112°57'0"W 112°54'0"W 112°51'0"W 112°48'0"W 112°45'0"W 112°42'0"W 112°39'0"W 112°36'0"W 112°33'0"W 112°30'0"W 112°27'0"W 112°24'0"W 112°21'0"W 112°18'0"W 112°15'0"W 112°12'0"W 112°9'0"W



Crucifixion Creek Fire
10,080 acres (IR 9/11 @2123)
Strawberry Fire
11,286 acres (IR 9/11 @2123)
Scalp Fire
16,958 acres (IR 9/13 @2135)
Dolly Varden
424 acres (IR 9/11 @2215)

US Forest Service
Helena - Lewis and Clark NF
Rocky Mountain Ranger District
USFS Region One
Operation Map
9/13/2017

Division Break
 Management Action Point
 Planning Area
 Non-Forest Service Land
 Admin Sites
 Structures (Eplan)
 Structure (MSL)
 Roads
 MajorHwys_MSL
 Fire Perimeter
 Trails
 Closed Trails
 Continental Divide
 Gas Pipeline
 Powerline
 Railroad ROW

Drop Point
 Helispot
 Lookout
 Repeater
 Staging Area
 Water Source

North Arrow
 Scale Bar
0 0.51 2 3 4 5 6 7 8 Miles

Prepared by: Tim Horn
Sept. 12, 2017, 2200

113°24'0"W 113°21'0"W 113°18'0"W 113°15'0"W 113°12'0"W 113°9'0"W 113°6'0"W 113°3'0"W 113°0'0"W 112°57'0"W 112°54'0"W 112°51'0"W 112°48'0"W 112°45'0"W 112°42'0"W 112°39'0"W 112°36'0"W 112°33'0"W 112°30'0"W 112°27'0"W 112°24'0"W 112°21'0"W 112°18'0"W 112°15'0"W 112°12'0"W 112°9'0"W