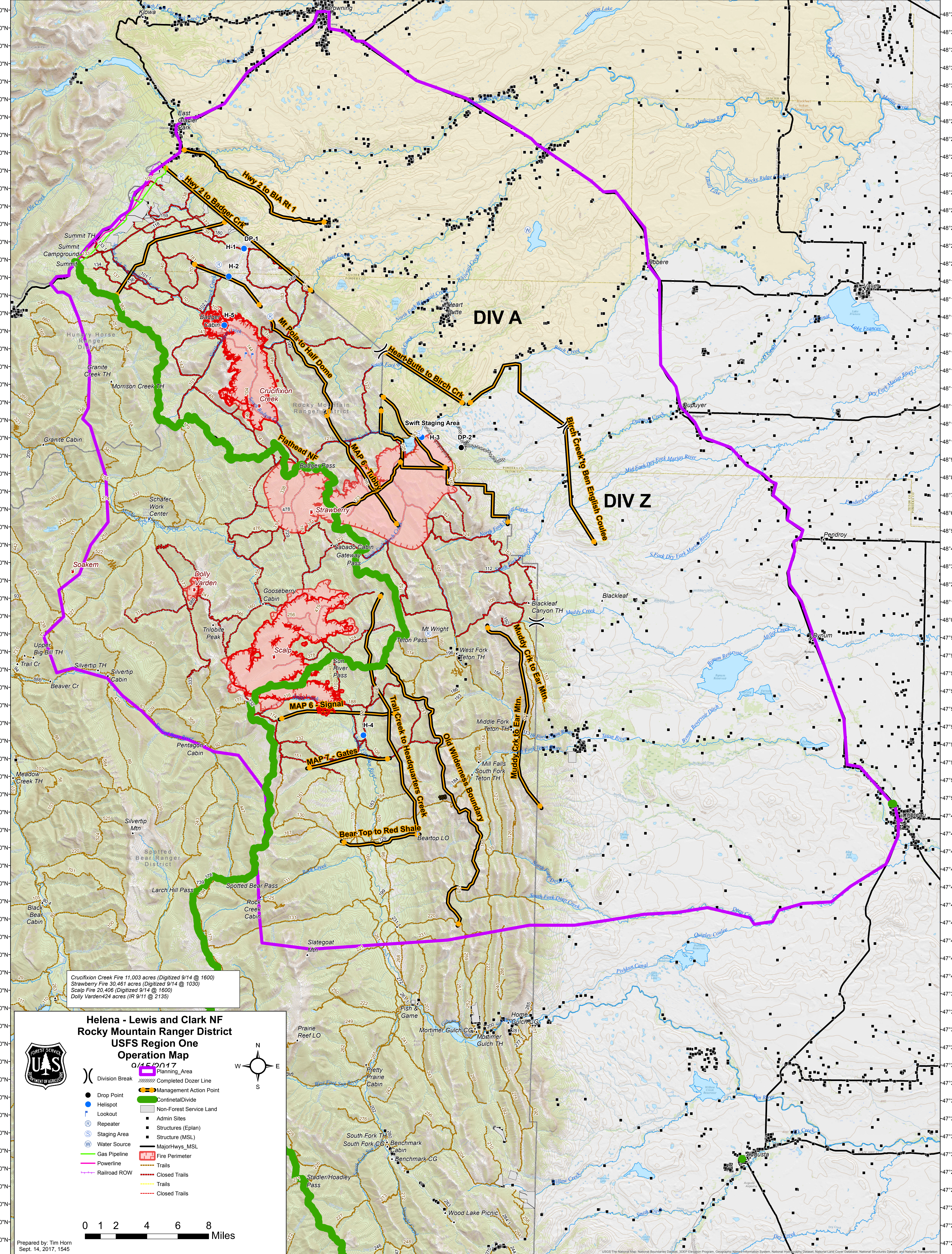


113°27'0"W 113°24'0"W 113°21'0"W 113°18'0"W 113°15'0"W 113°12'0"W 113°9'0"W 113°6'0"W 113°3'0"W 113°0'0"W 112°57'0"W 112°54'0"W 112°51'0"W 112°48'0"W 112°45'0"W 112°42'0"W 112°39'0"W 112°36'0"W 112°33'0"W 112°30'0"W 112°27'0"W 112°24'0"W 112°21'0"W 112°18'0"W 112°15'0"W 112°12'0"W 112°9'0"W

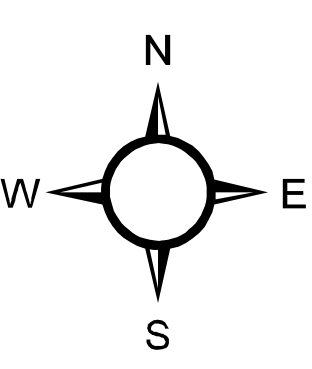


Crucifixion Creek Fire 11,003 acres (Digitized 9/14 @ 1600)
Strawberry Fire 30,461 acres (Digitized 9/14 @ 1030)
Scalp Fire 20,406 (Digitized 9/14 @ 1600)
Dolly Varden 424 acres (IR 9/11 @ 2135)

Helena - Lewis and Clark NF Rocky Mountain Ranger District USFS Region One Operation Map 0/15/2017



- Division Break
- Completed Dozer Line
- Management Action Point
- Drop Point
- Helispot
- Lookout
- Repeater
- Staging Area
- Water Source
- Gas Pipeline
- Powerline
- Railroad ROW
- Continental Divide
- Non-Forest Service Land
- Admin Sites
- Structures (Eplan)
- Structure (MSL)
- Major Hwys_MSL
- Fire Perimeter
- Trails
- Closed Trails
- Trails
- Closed Trails



0 1 2 4 6 8 Miles

Prepared by: Tim Horn
Sept. 14, 2017, 1545

113°24'0"W 113°21'0"W 113°18'0"W 113°15'0"W 113°9'0"W 113°6'0"W 113°3'0"W 113°0'0"W 112°57'0"W 112°54'0"W 112°51'0"W 112°48'0"W 112°45'0"W 112°42'0"W 112°39'0"W 112°36'0"W 112°33'0"W 112°30'0"W 112°27'0"W 112°24'0"W 112°21'0"W 112°18'0"W 112°15'0"W 112°12'0"W 112°9'0"W