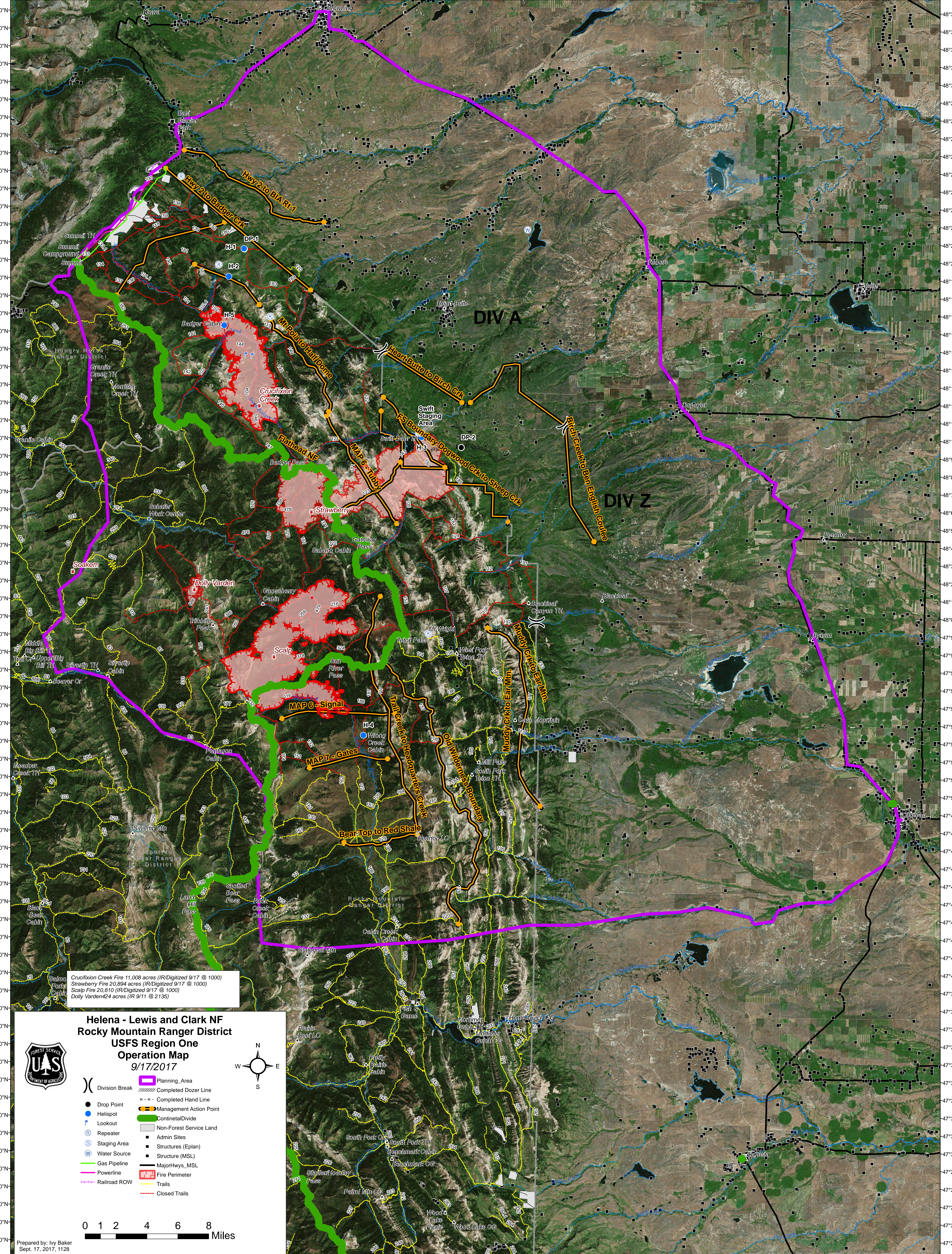



113°27'0"W 113°24'0"W 113°21'0"W 113°18'0"W 113°15'0"W 113°12'0"W 113°9'0"W 113°6'0"W 113°3'0"W 113°0'0"W 112°57'0"W 112°54'0"W 112°51'0"W 112°48'0"W 112°45'0"W 112°42'0"W 112°39'0"W 112°36'0"W 112°33'0"W 112°30'0"W 112°27'0"W 112°24'0"W 112°21'0"W 112°18'0"W 112°15'0"W 112°12'0"W 112°9'0"W



113°24'0"W 113°21'0"W 113°18'0"W 113°15'0"W 113°12'0"W 113°9'0"W 113°6'0"W 113°3'0"W 113°0'0"W 112°57'0"W 112°54'0"W 112°51'0"W 112°48'0"W 112°45'0"W 112°42'0"W 112°39'0"W 112°36'0"W 112°33'0"W 112°30'0"W 112°27'0"W 112°24'0"W 112°21'0"W 112°18'0"W 112°15'0"W 112°12'0"W 112°9'0"W

Crucifixion Creek Fire 11,008 acres (IR/Digitized 9/17 @ 1000)
Strawberry Fire 20,894 acres (IR/Digitized 9/17 @ 1000)
Scalp Fire 20,810 (IR/Digitized 9/17 @ 1000)
Dolly Varden 424 acres (IR 9/11 @ 2135)

**Helena - Lewis and Clark NF
Rocky Mountain Ranger District
USFS Region One
Operation Map
9/17/2017**



() Division Break	Planning Area
● Drop Point	Completed Dozer Line
○ Helispot	Completed Hand Line
⌚ Lookout	Management Action Point
Ⓡ Repeater	Continental Divide
Ⓢ Staging Area	Non-Forest Service Land
Ⓦ Water Source	Admin Sites
Ⓦ Gas Pipeline	Structures (Eplan)
Ⓦ Powerline	Structure (MSL)
Ⓦ Railroad ROW	Major Hwys_MSL
	Fire Perimeter
	Trails
	Closed Trails

0 1 2 4 6 8 Miles

Prepared by: Ivy Baker
Sept. 17, 2017, 1128