

113°35'40"W 113°35'30"W 113°35'20"W 113°35'10"W 113°35'0"W 113°34'50"W 113°34'40"W 113°34'30"W 113°34'20"W 113°34'10"W 113°34'0"W 113°33'50"W 113°33'40"W 113°33'30"W 113°33'20"W 113°33'10"W

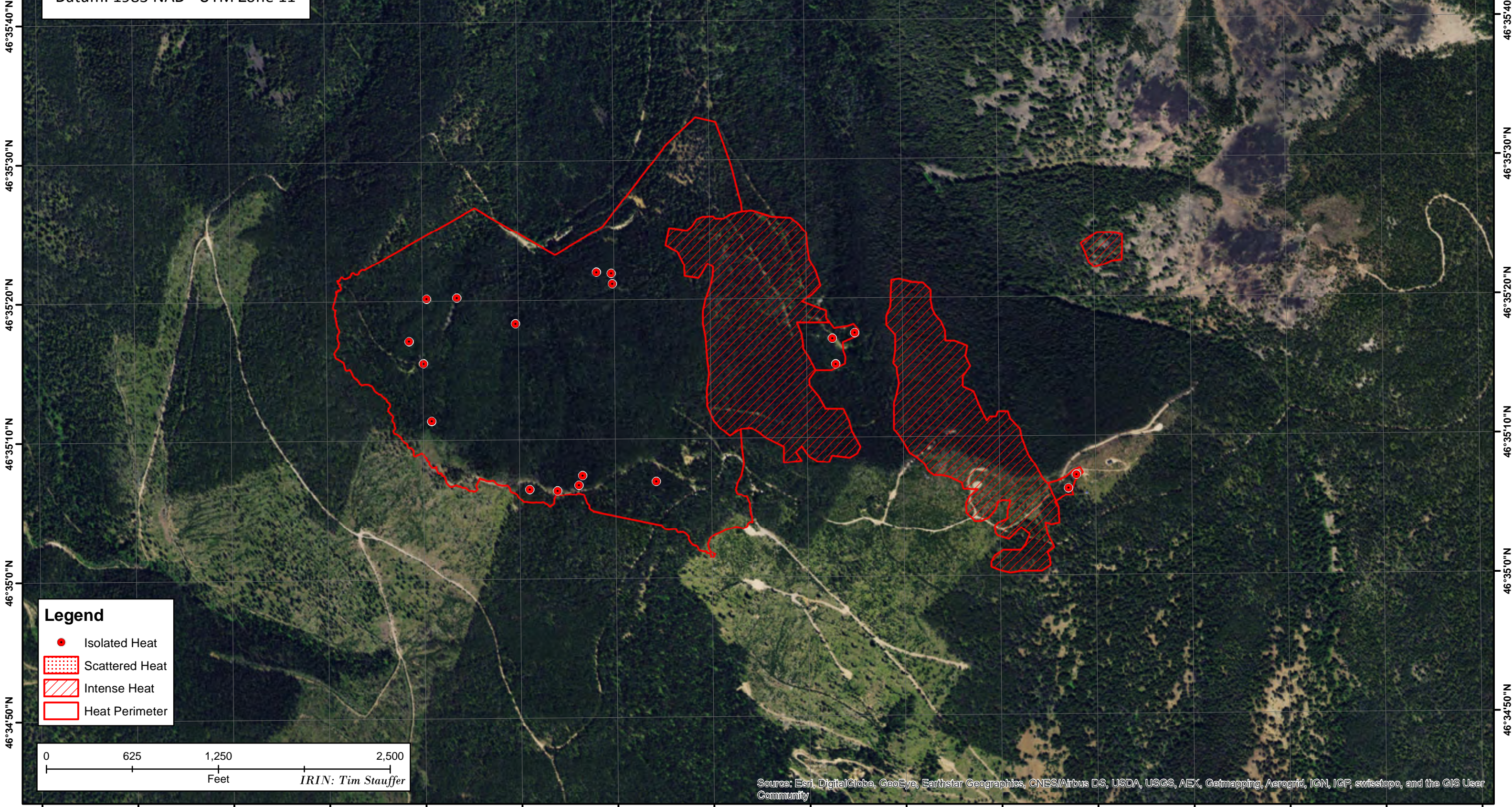
Sliderock Infrared Map

MT-LNF-001239

Flight: July 19, 2017 @ 0300 MDT

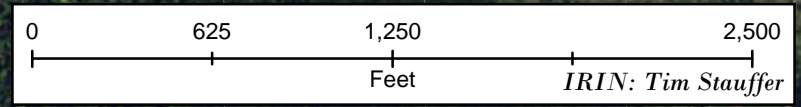
Acres: 186

Datum: 1983 NAD - UTM Zone 11



Legend

- Isolated Heat
- Scattered Heat
- Intense Heat
- Heat Perimeter



Source: Esri, DigitalGlobe, GeoEye, Earthstar Geographics, CNES/Airbus DS, USDA, USGS, AEX, Getmapping, Aerogrid, IGN, IGP, swisstopo, and the GIS User Community

113°35'40"W 113°35'30"W 113°35'20"W 113°35'10"W 113°35'0"W 113°34'50"W 113°34'40"W 113°34'30"W 113°34'20"W 113°34'10"W 113°34'0"W 113°33'50"W 113°33'40"W 113°33'30"W 113°33'20"W 113°33'10"W