

113°35'W

113°34'W

113°33'W

46°36'N

46°35'N

46°35'N

113°35'W

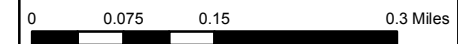
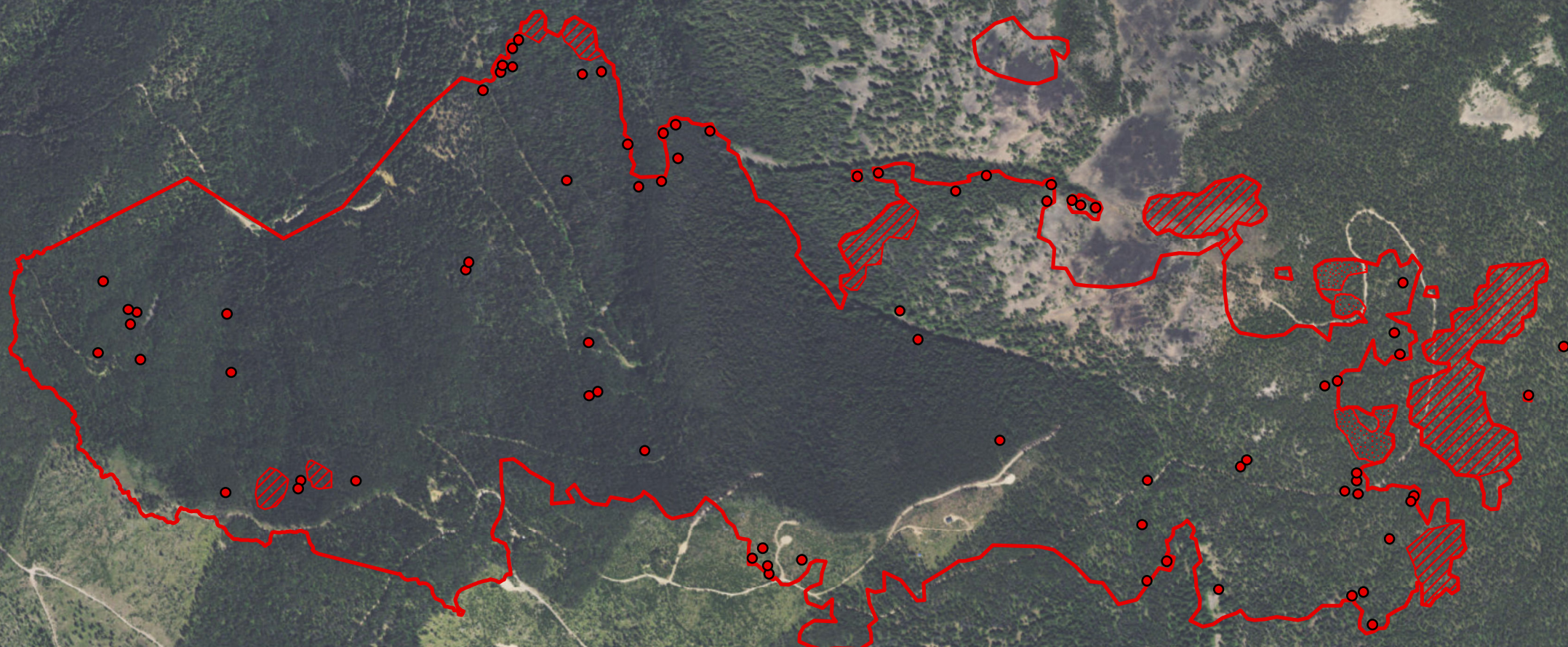
113°34'W

113°33'W

Sliderock Fire
MT-LNF-001239
Infrared Heat Sources
1:10,000

- Heat Perimeter
- Intense Heat Areas
- Scattered Heat Areas
- Isolated Heat Sources

NAD 1983 UTM Zone 12N



Source: Esri, DigitalGlobe, GeoEye, Earthstar Geographics, CNES/Airbus DS, USDA, USGS, AEX, Getmapping, Aerogrid, IGN, IGP, swisstopo, and the GIS User Community

IR Interpreter: Brian Monroe
 IR interpreted acres: 420
 Date: 07/25/2017
 Time received the Image: 2234 hrs