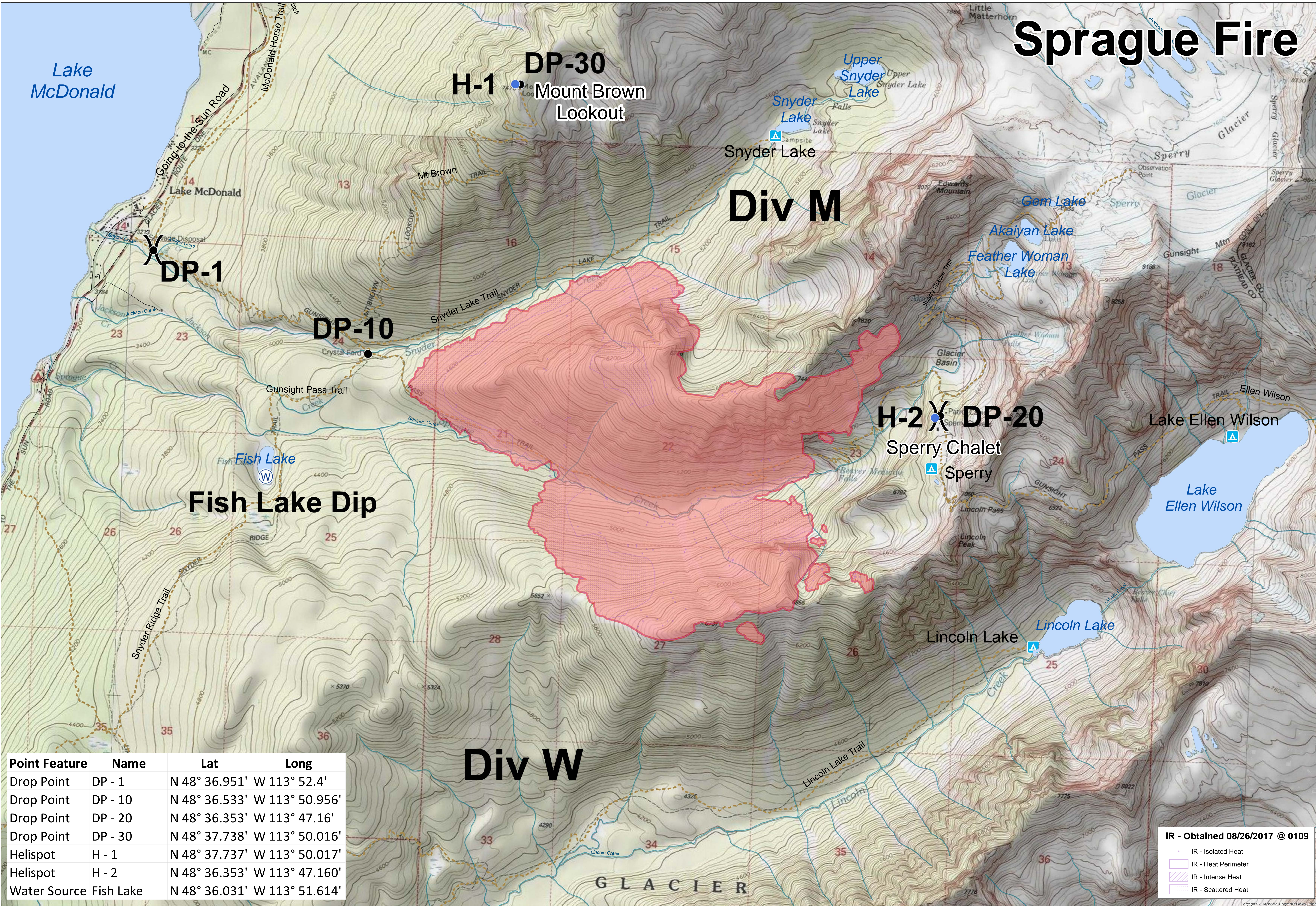


Sprague Fire



Point Feature	Name	Lat	Long
Drop Point	DP - 1	N 48° 36.951' W 113° 52.4'	
Drop Point	DP - 10	N 48° 36.533' W 113° 50.956'	
Drop Point	DP - 20	N 48° 36.353' W 113° 47.16'	
Drop Point	DP - 30	N 48° 37.738' W 113° 50.016'	
Helispot	H - 1	N 48° 37.737' W 113° 50.017'	
Helispot	H - 2	N 48° 36.353' W 113° 47.160'	
Water Source	Fish Lake	N 48° 36.031' W 113° 51.614'	

IR - Obtained 08/26/2017 @ 0109

- IR - Isolated Heat
- IR - Heat Perimeter
- IR - Intense Heat
- IR - Scattered Heat

BRIEFING MAP

SPRAGUE FIRE
 MT-GNP-000526
 08/26/2017

- Division
- Drop Point
- Helispot
- Backcountry Campground
- Fire Perimeter
- Glacier NP Trails
- Glacier NP Roads
- NHD Streams
- NHD Water Bodies

Acres Burned (est): 1,543 ac

0 0.25 0.5 1 Miles

Map Datum/Projection: NAD_1983_UTM_Zone_12N

