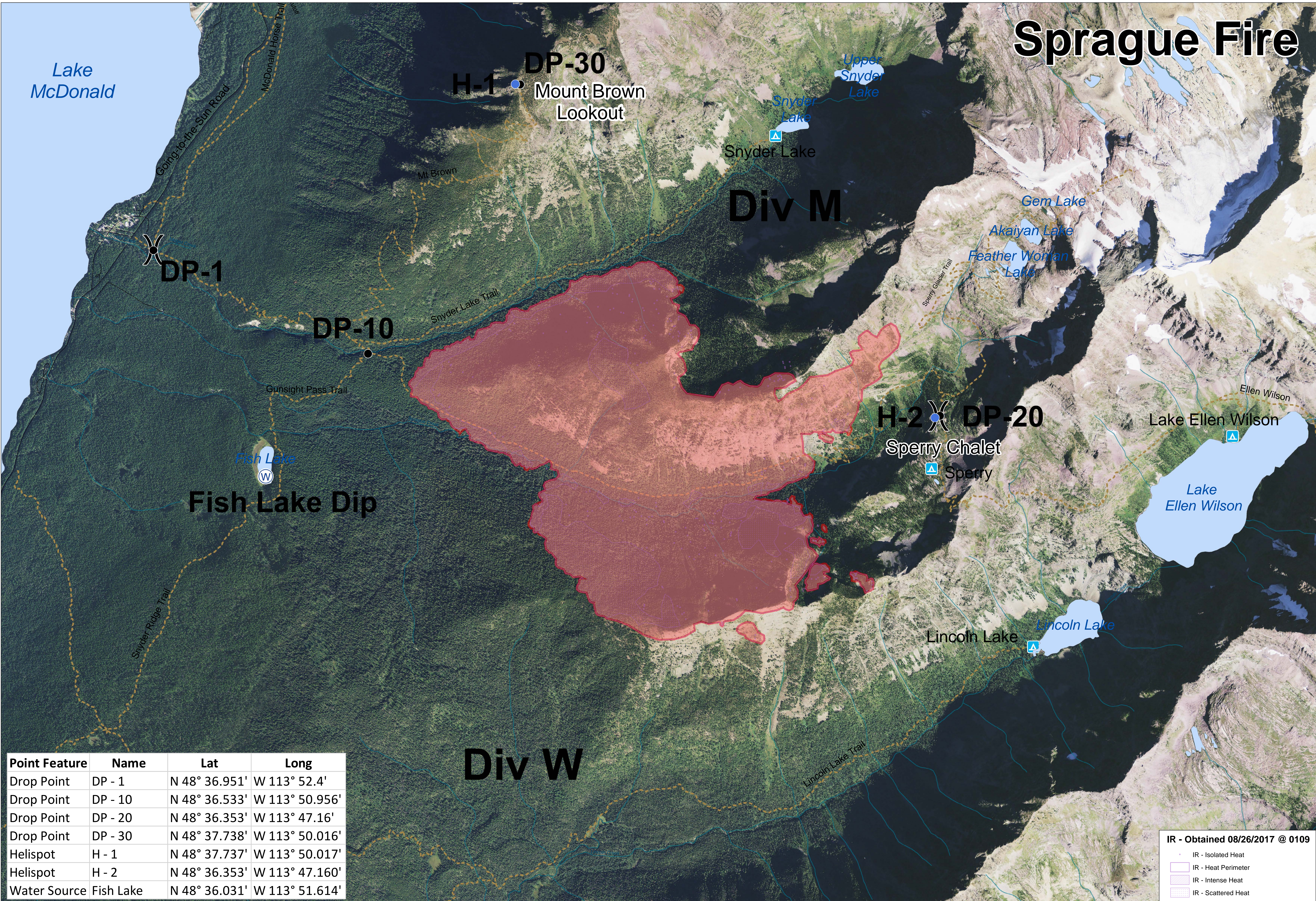


Sprague Fire



Point Feature	Name	Lat	Long
Drop Point	DP - 1	N 48° 36.951'	W 113° 52.4'
Drop Point	DP - 10	N 48° 36.533'	W 113° 50.956'
Drop Point	DP - 20	N 48° 36.353'	W 113° 47.16'
Drop Point	DP - 30	N 48° 37.738'	W 113° 50.016'
Helispot	H - 1	N 48° 37.737'	W 113° 50.017'
Helispot	H - 2	N 48° 36.353'	W 113° 47.160'
Water Source	Fish Lake	N 48° 36.031'	W 113° 51.614'

IR - Obtained 08/26/2017 @ 0109

- IR - Isolated Heat
- IR - Heat Perimeter
- IR - Intense Heat
- IR - Scattered Heat

BRIEFING MAP



SPRAGUE FIRE
MT-GNP-000526
08/26/2017

- Division
- Drop Point
- Helispot
- Backcountry Campground
- Fire Perimeter
- Glacier NP Trails
- Glacier NP Roads
- NHD Streams
- NHD Water Bodies

Acres Burned (est): 1,543 ac

