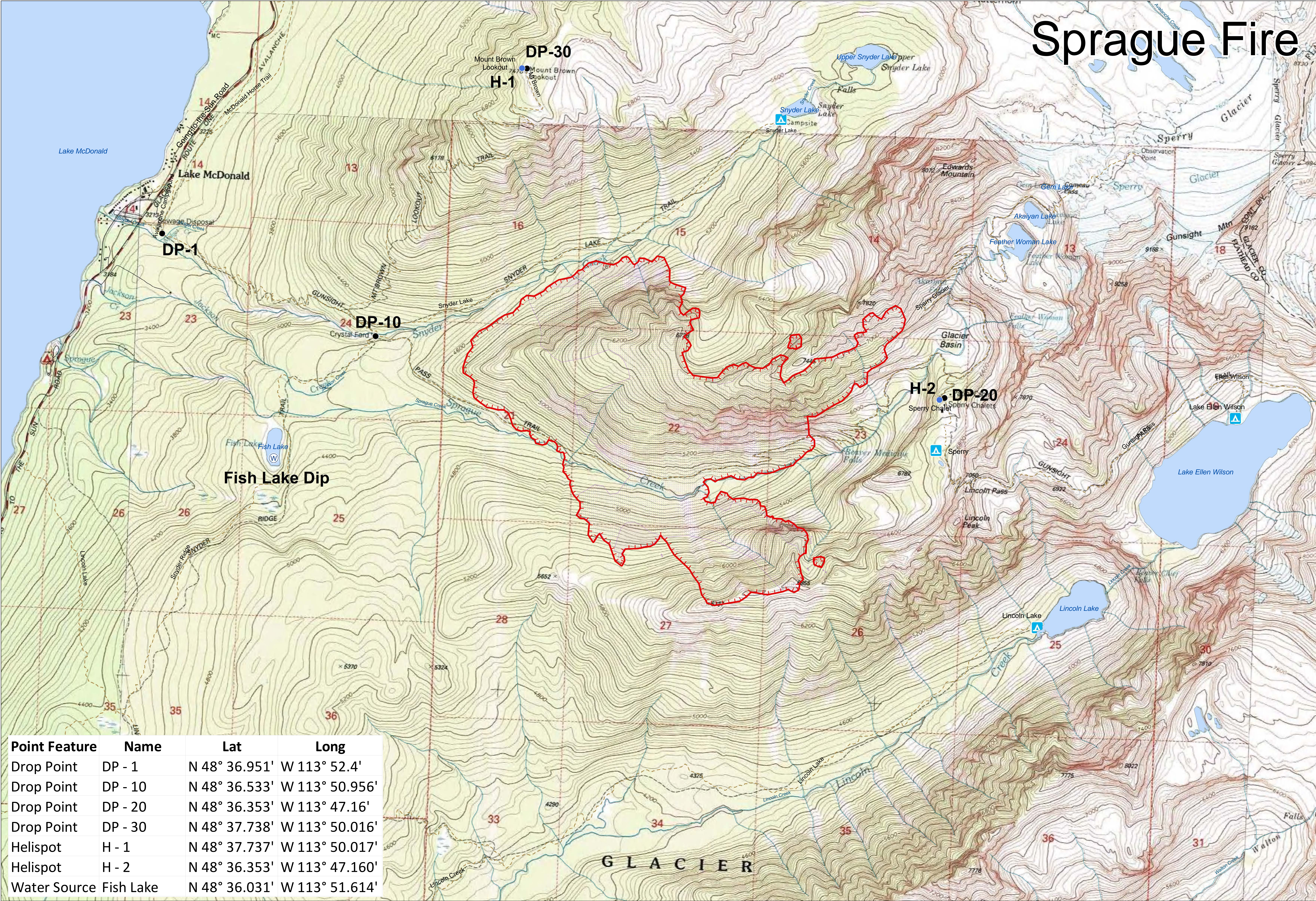


Sprague Fire



Point Feature	Name	Lat	Long
Drop Point	DP - 1	N 48° 36.951'	W 113° 52.4'
Drop Point	DP - 10	N 48° 36.533'	W 113° 50.956'
Drop Point	DP - 20	N 48° 36.353'	W 113° 47.16'
Drop Point	DP - 30	N 48° 37.738'	W 113° 50.016'
Helispot	H - 1	N 48° 37.737'	W 113° 50.017'
Helispot	H - 2	N 48° 36.353'	W 113° 47.160'
Water Source	Fish Lake	N 48° 36.031'	W 113° 51.614'

OPERATIONS MAP

SPRAGUE FIRE
MT-GNP-000526
08/21/2017

- Drop Point
- Helispot
- ▲ Backcountry Campground
- Uncontrolled Fire Edge

- Glacier NP Trails
- Glacier NP Roads
- NHD Streams
- NHD Water Bodies

- IR - Obtained 08/20/2017 @ 2240
- IR - Isolated Heat
 - IR - Heat Perimeter
 - IR - Intense Heat
 - IR - Scattered Heat

Acres Burned (est): 1,183 ac

0 0.25 0.5 1 Miles

Map Datum/Projection: NAD_1983_UTM_Zone_12N

