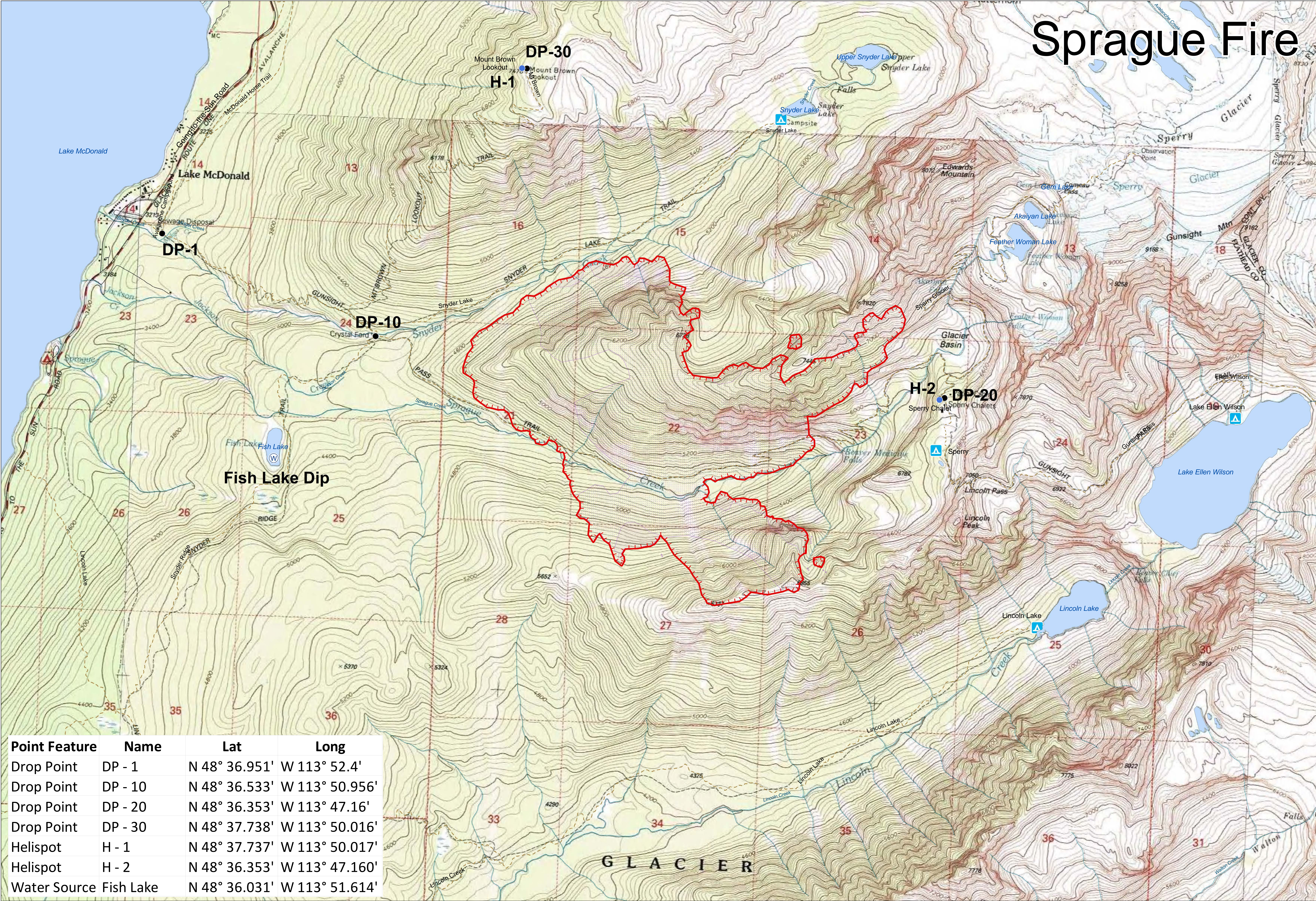


Sprague Fire



| Point Feature | Name | Lat | Long |
|---------------|-----------|---------------|----------------|
| Drop Point | DP - 1 | N 48° 36.951' | W 113° 52.4' |
| Drop Point | DP - 10 | N 48° 36.533' | W 113° 50.956' |
| Drop Point | DP - 20 | N 48° 36.353' | W 113° 47.16' |
| Drop Point | DP - 30 | N 48° 37.738' | W 113° 50.016' |
| Helispot | H - 1 | N 48° 37.737' | W 113° 50.017' |
| Helispot | H - 2 | N 48° 36.353' | W 113° 47.160' |
| Water Source | Fish Lake | N 48° 36.031' | W 113° 51.614' |

OPERATIONS MAP

SPRAGUE FIRE
MT-GNP-000526
08/22/2017

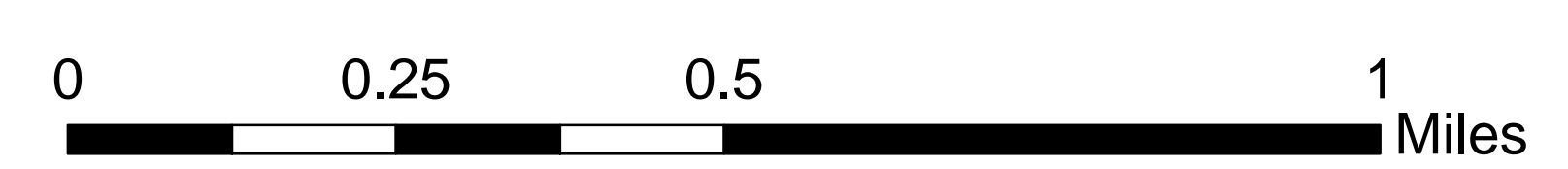
- Drop Point
- Helispot
- ▲ Backcountry Campground
- Uncontrolled Fire Edge

- Glacier NP Trails
- Glacier NP Roads
- NHD Streams
- NHD Water Bodies

IR - Obtained 08/20/2017 @ 2240

- IR - Isolated Heat
- IR - Heat Perimeter
- IR - Intense Heat
- IR - Scattered Heat

Acres Burned (est): 1,183 ac



Map Datum/Projection: NAD_1983_UTM_Zone_12N

