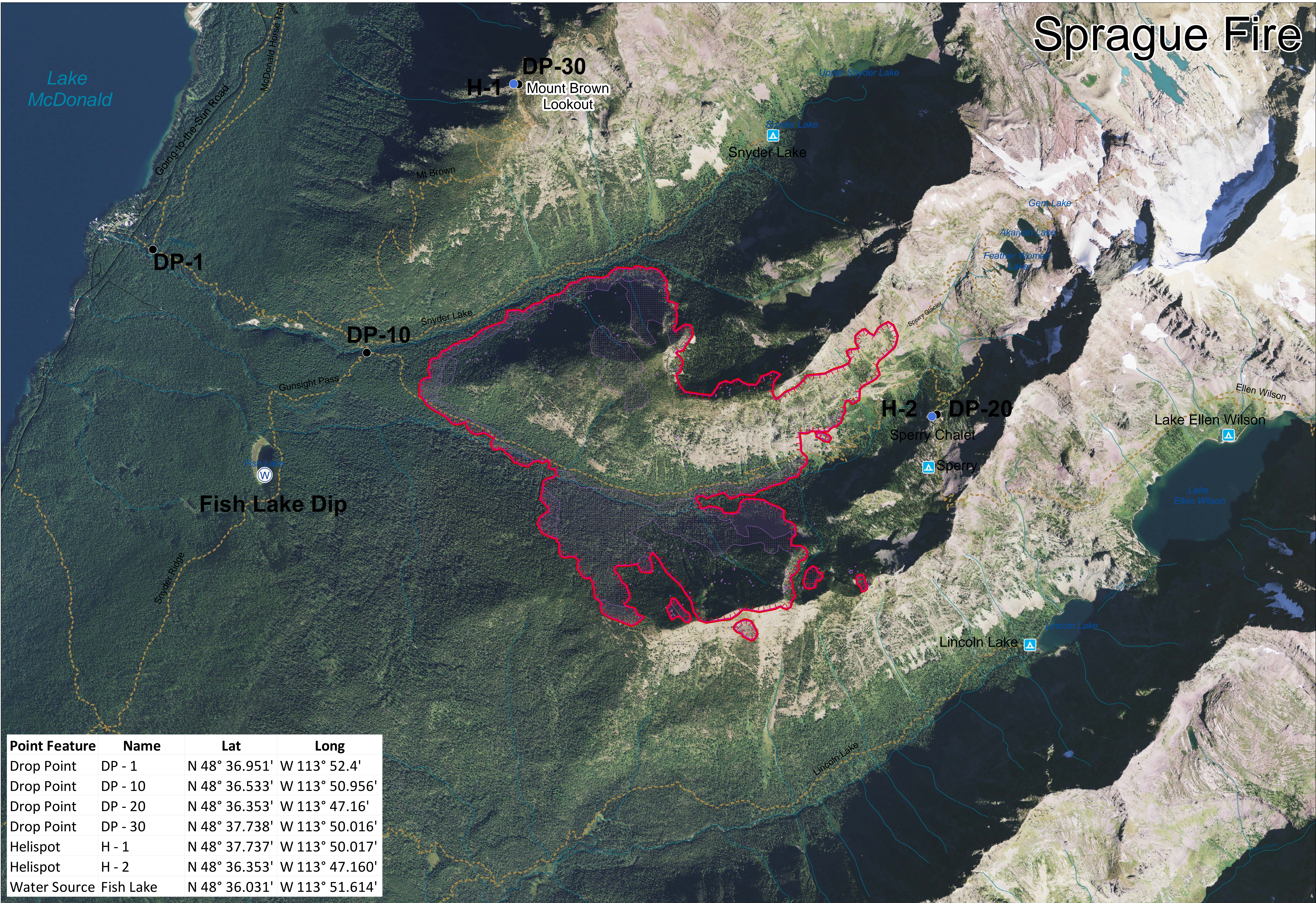


Sprague Fire



| Point Feature | Name | Lat | Long |
|---------------|-----------|---------------|----------------|
| Drop Point | DP - 1 | N 48° 36.951' | W 113° 52.4' |
| Drop Point | DP - 10 | N 48° 36.533' | W 113° 50.956' |
| Drop Point | DP - 20 | N 48° 36.353' | W 113° 47.16' |
| Drop Point | DP - 30 | N 48° 37.738' | W 113° 50.016' |
| Helispot | H - 1 | N 48° 37.737' | W 113° 50.017' |
| Helispot | H - 2 | N 48° 36.353' | W 113° 47.160' |
| Water Source | Fish Lake | N 48° 36.031' | W 113° 51.614' |

BRIEFING MAP

Glacier National Park

SPRAGUE FIRE
MT-GNP-000526
08/23/2017

| | | | |
|--------------------------|------------------------|-------------------|---------------------------------|
| ● Drop Point | Uncontrolled Fire Edge | Glacier NP Trails | IR - Obtained 08/22/2017 @ 2334 |
| ● Helispot | | Glacier NP Roads | IR - Isolated Heat |
| ▲ Backcountry Campground | | NHD Streams | IR - Heat Perimeter |
| | | NHD Water Bodies | IR - Intense Heat |
| | | | IR - Scattered Heat |

Acres Burned (est): 1,364 ac

0 0.25 0.5 1 Miles

Map Datum/Projection: NAD_1983_UTM_Zone_12N

Glacier National Park

Flathead Interagency Type 3 Team