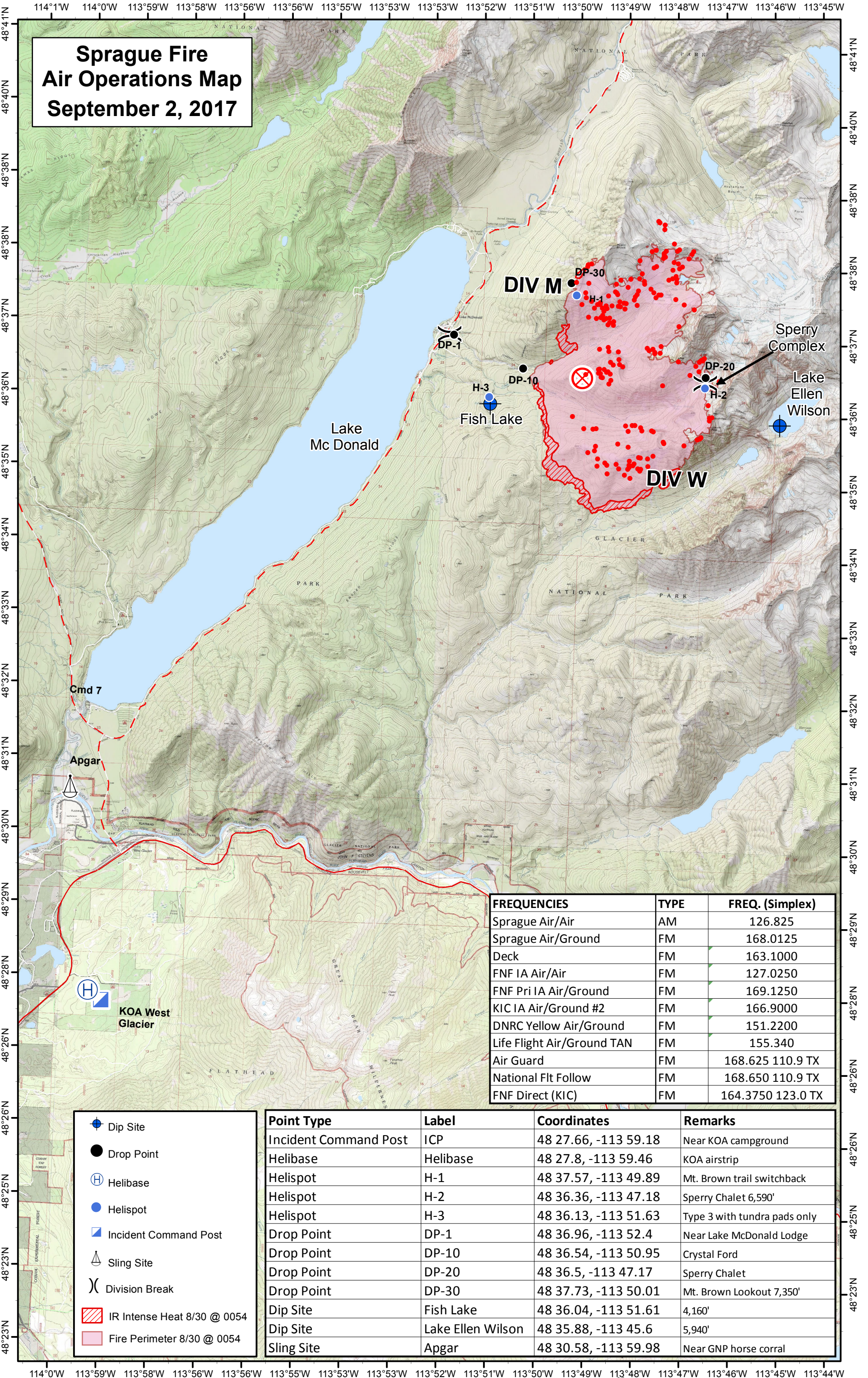


Sprague Fire Air Operations Map September 2, 2017

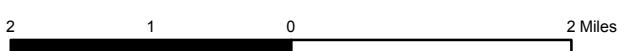


FREQUENCIES	TYPE	FREQ. (Simplex)
Sprague Air/Air	AM	126.825
Sprague Air/Ground	FM	168.0125
Deck	FM	163.1000
FNF IA Air/Air	FM	127.0250
FNF Pri IA Air/Ground	FM	169.1250
KIC IA Air/Ground #2	FM	166.9000
DNRC Yellow Air/Ground	FM	151.2200
Life Flight Air/Ground TAN	FM	155.340
Air Guard	FM	168.625 110.9 TX
National Flt Follow	FM	168.650 110.9 TX
FNF Direct (KIC)	FM	164.3750 123.0 TX

	Dip Site
	Drop Point
	Helibase
	Helispot
	Incident Command Post
	Sling Site
	Division Break
	IR Intense Heat 8/30 @ 0054
	Fire Perimeter 8/30 @ 0054

Point Type	Label	Coordinates	Remarks
Incident Command Post	ICP	48 27.66, -113 59.18	Near KOA campground
Helibase	Helibase	48 27.8, -113 59.46	KOA airstrip
Helispot	H-1	48 37.57, -113 49.89	Mt. Brown trail switchback
Helispot	H-2	48 36.36, -113 47.18	Sperry Chalet 6,590'
Helispot	H-3	48 36.13, -113 51.63	Type 3 with tundra pads only
Drop Point	DP-1	48 36.96, -113 52.4	Near Lake McDonald Lodge
Drop Point	DP-10	48 36.54, -113 50.95	Crystal Ford
Drop Point	DP-20	48 36.5, -113 47.17	Sperry Chalet
Drop Point	DP-30	48 37.73, -113 50.01	Mt. Brown Lookout 7,350'
Dip Site	Fish Lake	48 36.04, -113 51.61	4,160'
Dip Site	Lake Ellen Wilson	48 35.88, -113 45.6	5,940'
Sling Site	Apgar	48 30.58, -113 59.98	Near GNP horse corral

Note: Lat/Long tick labels are not always displaying correctly on this map. They are actually at 1-minute intervals.



***NO TFR FOR SPRAGUE FIRE ***

