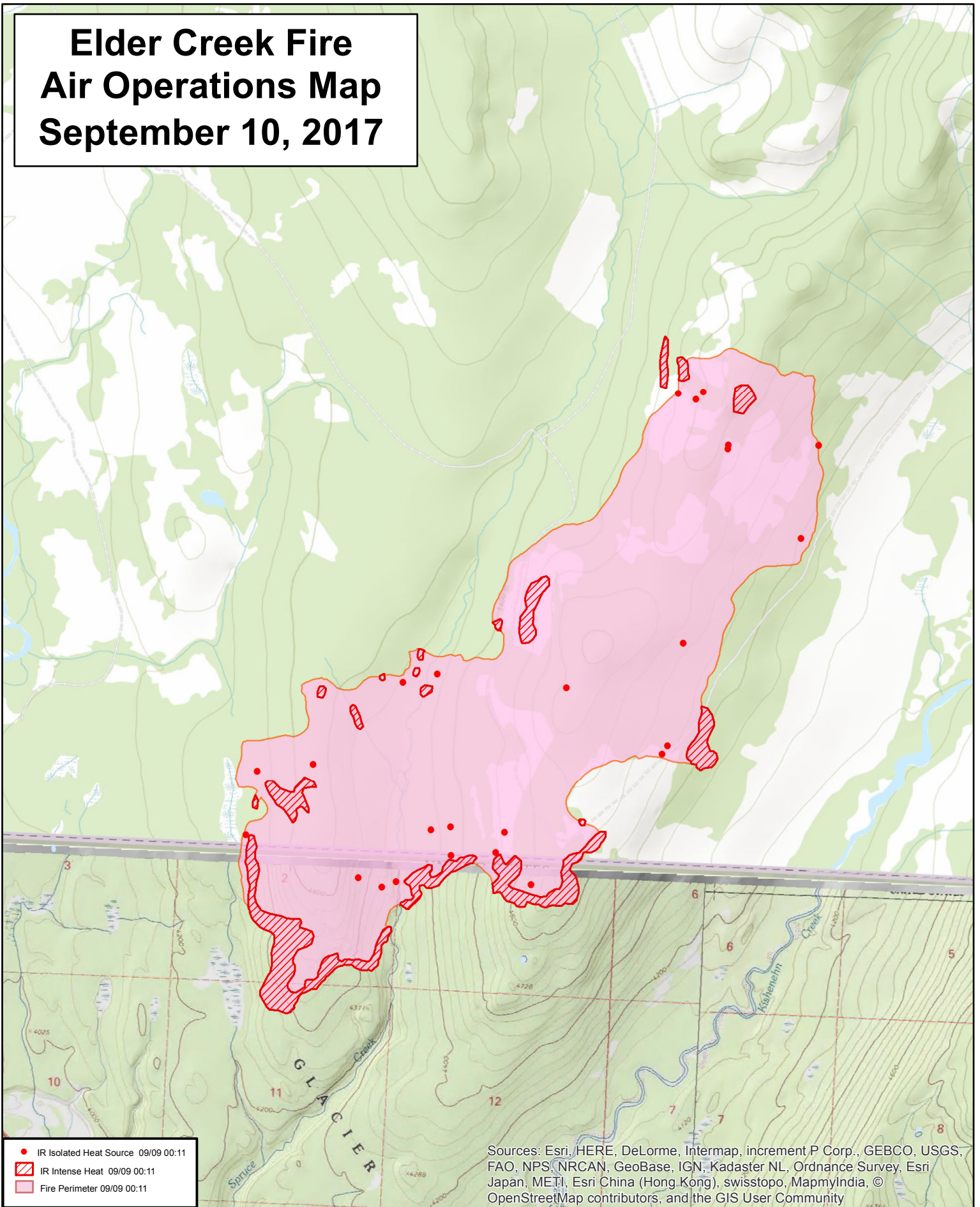
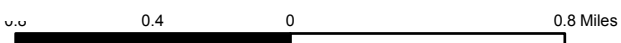


Elder Creek Fire Air Operations Map September 10, 2017



- IR Isolated Heat Source 09/09 00:11
- IR Intense Heat 09/09 00:11
- Fire Perimeter 09/09 00:11

Sources: Esri, HERE, DeLorme, Intermap, increment P Corp., GEBCO, USGS, FAO, NPS, NRCAN, GeoBase, IGN, Kadaster NL, Ordnance Survey, Esri Japan, METI, Esri China (Hong Kong), swisstopo, MapmyIndia, © OpenStreetMap contributors, and the GIS User Community



***NO TFR FOR SPRAGUE FIRE ***