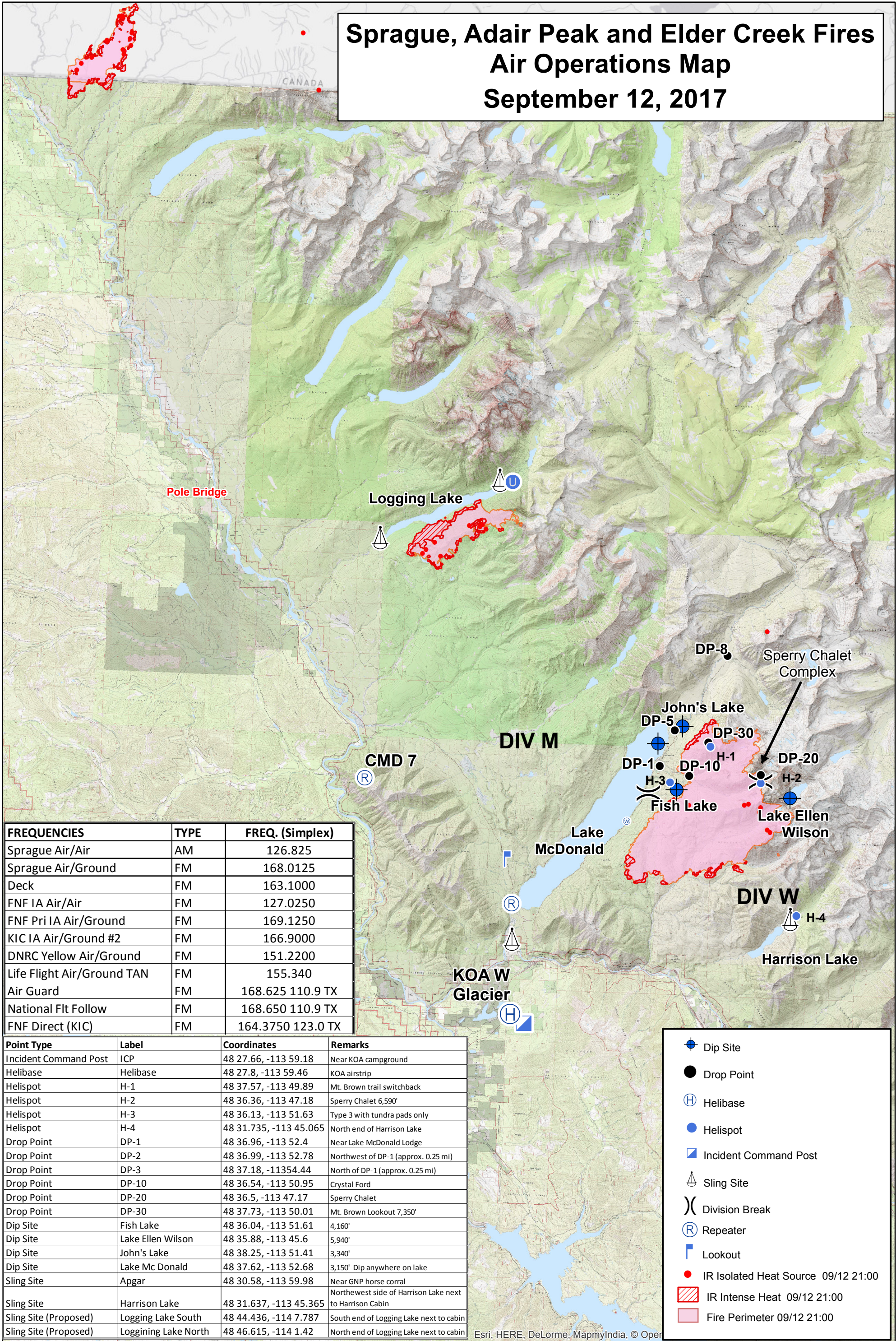


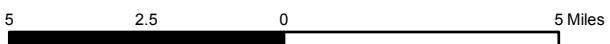
# Sprague, Adair Peak and Elder Creek Fires Air Operations Map September 12, 2017



| FREQUENCIES                | TYPE | FREQ. (Simplex)   |
|----------------------------|------|-------------------|
| Sprague Air/Air            | AM   | 126.825           |
| Sprague Air/Ground         | FM   | 168.0125          |
| Deck                       | FM   | 163.1000          |
| FNF IA Air/Air             | FM   | 127.0250          |
| FNF Pri IA Air/Ground      | FM   | 169.1250          |
| KIC IA Air/Ground #2       | FM   | 166.9000          |
| DNRC Yellow Air/Ground     | FM   | 151.2200          |
| Life Flight Air/Ground TAN | FM   | 155.340           |
| Air Guard                  | FM   | 168.625 110.9 TX  |
| National Flt Follow        | FM   | 168.650 110.9 TX  |
| FNF Direct (KIC)           | FM   | 164.3750 123.0 TX |

| Point Type            | Label              | Coordinates            | Remarks  |
|-----------------------|--------------------|------------------------|--|
| Incident Command Post | ICP                | 48 27.66, -113 59.18   | Near KOA campground                                    |
| Helibase              | Helibase           | 48 27.8, -113 59.46    | KOA airstrip   |
| Helispot              | H-1                | 48 37.57, -113 49.89   | Mt. Brown trail switchback                             |
| Helispot              | H-2                | 48 36.36, -113 47.18   | Sperry Chalet 6,590'                                   |
| Helispot              | H-3                | 48 36.13, -113 51.63   | Type 3 with tundra pads only                           |
| Helispot              | H-4                | 48 31.735, -113 45.065 | North end of Harrison Lake                             |
| Drop Point            | DP-1               | 48 36.96, -113 52.4    | Near Lake McDonald Lodge                               |
| Drop Point            | DP-2               | 48 36.99, -113 52.78   | Northwest of DP-1 (approx. 0.25 mi)                    |
| Drop Point            | DP-3               | 48 37.18, -113 54.44   | North of DP-1 (approx. 0.25 mi)                        |
| Drop Point            | DP-10              | 48 36.54, -113 50.95   | Crystal Ford   |
| Drop Point            | DP-20              | 48 36.5, -113 47.17    | Sperry Chalet  |
| Drop Point            | DP-30              | 48 37.73, -113 50.01   | Mt. Brown Lookout 7,350'                               |
| Dip Site              | Fish Lake          | 48 36.04, -113 51.61   | 4,160'   |
| Dip Site              | Lake Ellen Wilson  | 48 35.88, -113 45.6    | 5,940'   |
| Dip Site              | John's Lake        | 48 38.25, -113 51.41   | 3,340'   |
| Dip Site              | Lake Mc Donald     | 48 37.62, -113 52.68   | 3,150' Dip anywhere on lake                            |
| Sling Site            | Apgar              | 48 30.58, -113 59.98   | Near GNP horse corral                                  |
| Sling Site            | Harrison Lake      | 48 31.637, -113 45.365 | Northwest side of Harrison Lake next to Harrison Cabin |
| Sling Site (Proposed) | Logging Lake South | 48 44.436, -114 7.787  | South end of Logging Lake next to cabin                |
| Sling Site (Proposed) | Logging Lake North | 48 46.615, -114 1.42   | North end of Logging Lake next to cabin                |

- Dip Site
- Drop Point
- Helibase
- Helispot
- Incident Command Post
- Sling Site
- Division Break
- Repeater
- Lookout
- IR Isolated Heat Source 09/12 21:00
- IR Intense Heat 09/12 21:00
- Fire Perimeter 09/12 21:00



\*\*\*NO TFR FOR SPRAGUE FIRE \*\*\*



Esri, HERE, DeLorme, MapmyIndia, © Open