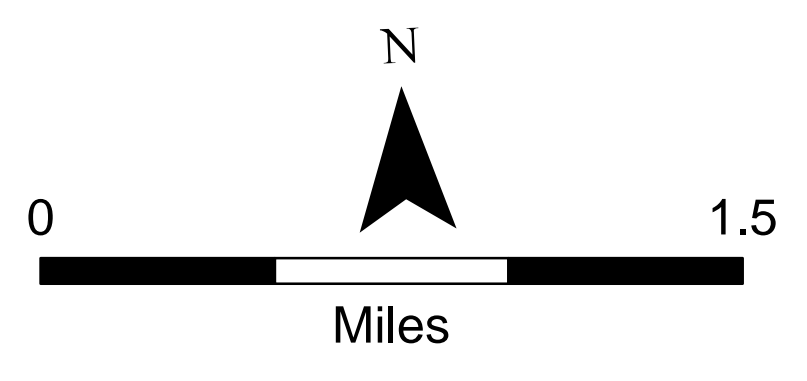
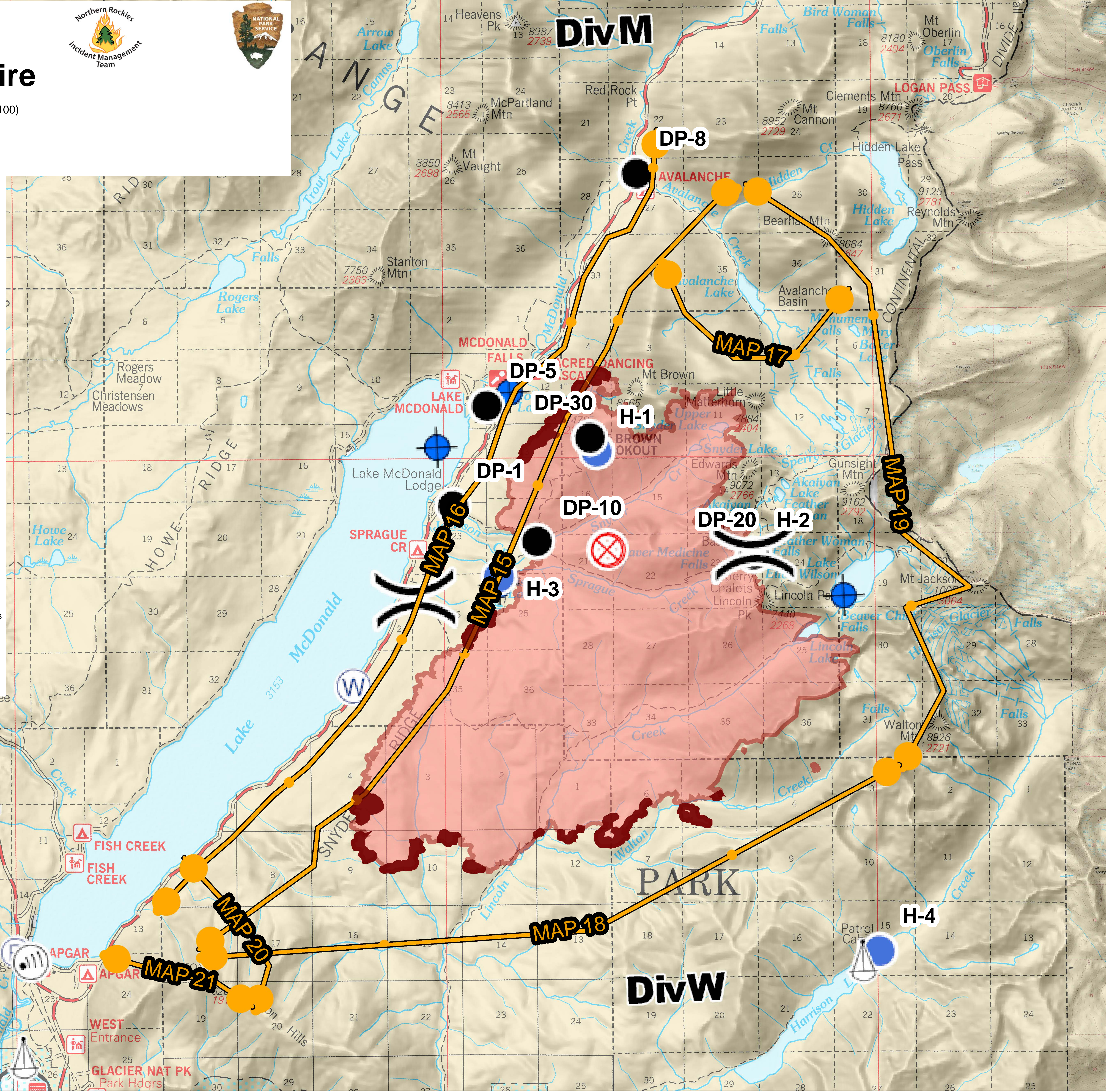


BRIEFING Sprague Fire

9/13/17
(14,750 Acres - IR 9/11/17 @2100)



- () Division Break
- ⊕ Repeater
- ◆ Dip Site
- Drop Point
- ⊗ Fire Origin
- ⊕ Helibase
- ⊕ Unimproved Landing Area
- ⊕ Helispot
- ⊕ Incident Command Post
- ⊕ Internet Access
- ⊕ Lookout
- ⊕ Sling Site
- ⊕ Water Source
- Management Action Points
- Intense Heat
- Fire Perimeter



Div M

Div W

DP-8

DP-5

DP-30

DP-1

DP-10

DP-20

MAP 16

MAP 15

MAP 17

MAP 19

MAP 18

MAP 20

MAP 21

H-1

H-2

H-3

H-4