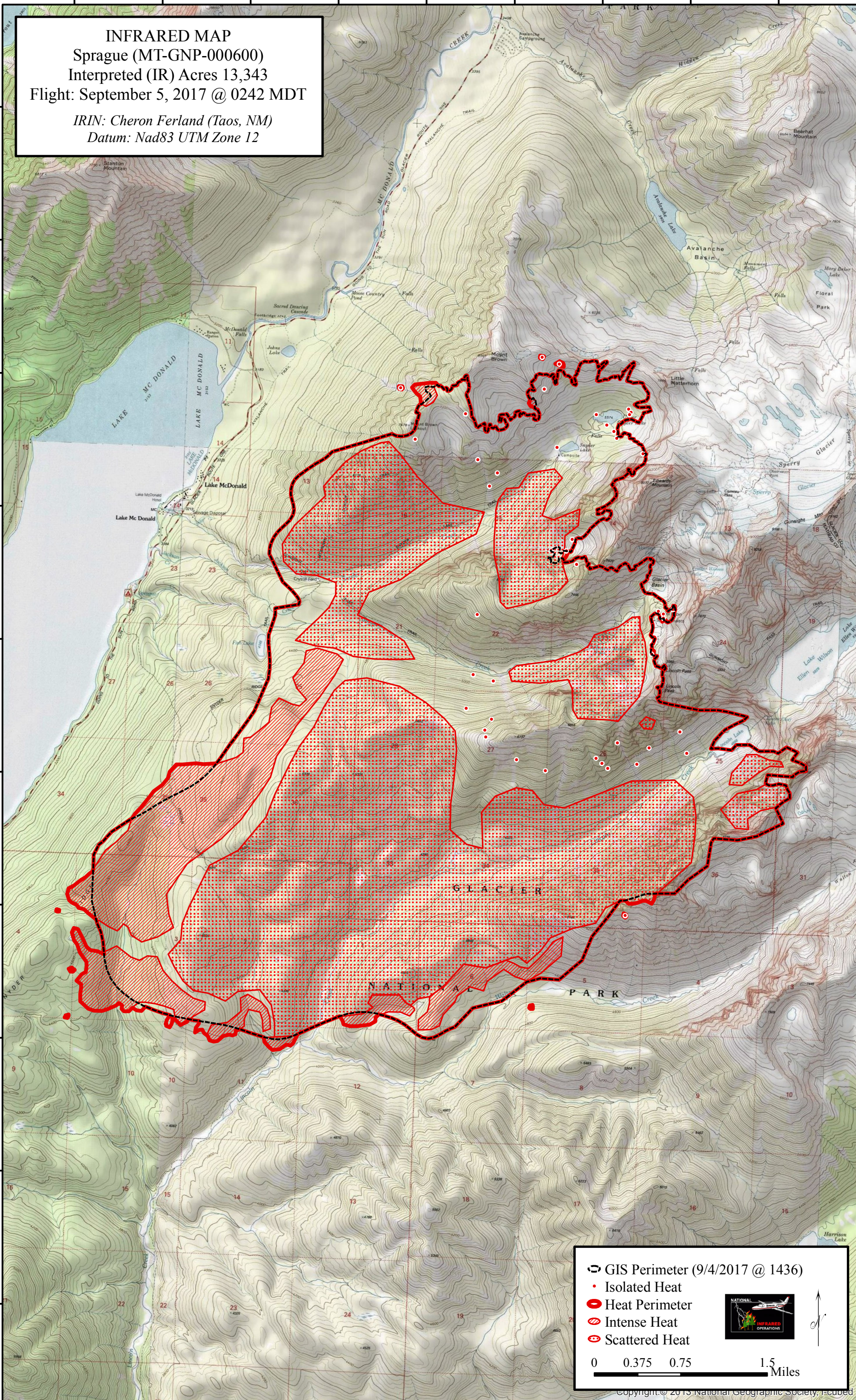







113°54'0"W 113°53'0"W 113°52'0"W 113°51'0"W 113°50'0"W 113°49'0"W 113°48'0"W 113°47'0"W 113°46'0"W



48°41'0"N  
48°40'0"N  
48°39'0"N  
48°38'0"N  
48°37'0"N  
48°36'0"N  
48°35'0"N  
48°34'0"N  
48°33'0"N  
48°32'0"N  
48°31'0"N

**INFRARED MAP**  
Sprague (MT-GNP-000600)  
Interpreted (IR) Acres 13,343  
Flight: September 5, 2017 @ 0242 MDT  
*IRIN: Cheron Ferland (Taos, NM)*  
*Datum: Nad83 UTM Zone 12*



-  GIS Perimeter (9/4/2017 @ 1436)
-  Isolated Heat
-  Heat Perimeter
-  Intense Heat
-  Scattered Heat

0 0.375 0.75 1.5 Miles

113°54'0"W 113°53'0"W 113°52'0"W 113°51'0"W 113°50'0"W 113°49'0"W 113°48'0"W 113°47'0"W 113°46'0"W 113°45'0"W