

113°50'0"W

113°45'0"W

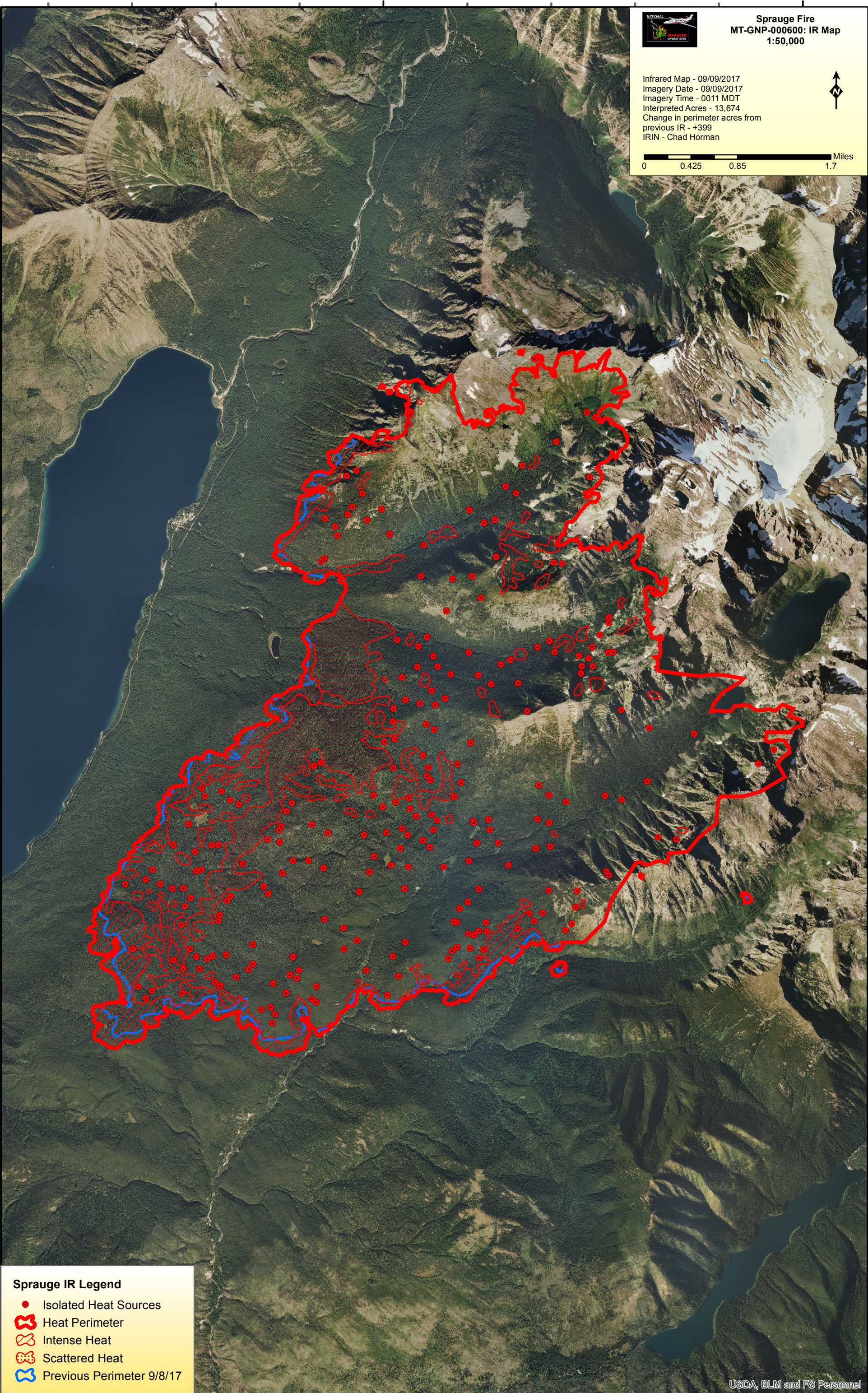
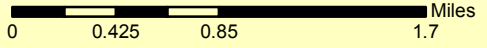
48°40'0"N

48°40'0"N



Sprague Fire MT-GNP-000600: IR Map 1:50,000






Infrared Map - 09/09/2017
Imagery Date - 09/09/2017
Imagery Time - 0011 MDT
Interpreted Acres - 13,674
Change in perimeter acres from
previous IR - +3999
IRIN - Chad Horman



48°35'0"N

48°35'0"N

Sprague IR Legend

-  Isolated Heat Sources
-  Heat Perimeter
-  Intense Heat
-  Scattered Heat
-  Previous Perimeter 9/8/17

USDA, BLM and FS Personnel

113°55'0"W

113°50'0"W

113°45'0"W