

113°50'0"W

113°45'0"W

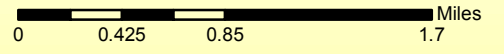
48°40'0"N

48°40'0"N



### Sprague Fire MT-GNP-000600: IR Map 1:50,000

Infrared Map - 09/11/2017  
Imagery Date - 09/10/2017  
Imagery Time - 2211 MDT  
Interpreted Acres - 14,432  
Change in perimeter acres from  
previous IR - +702  
IRIN - Chad Horman



48°35'0"N

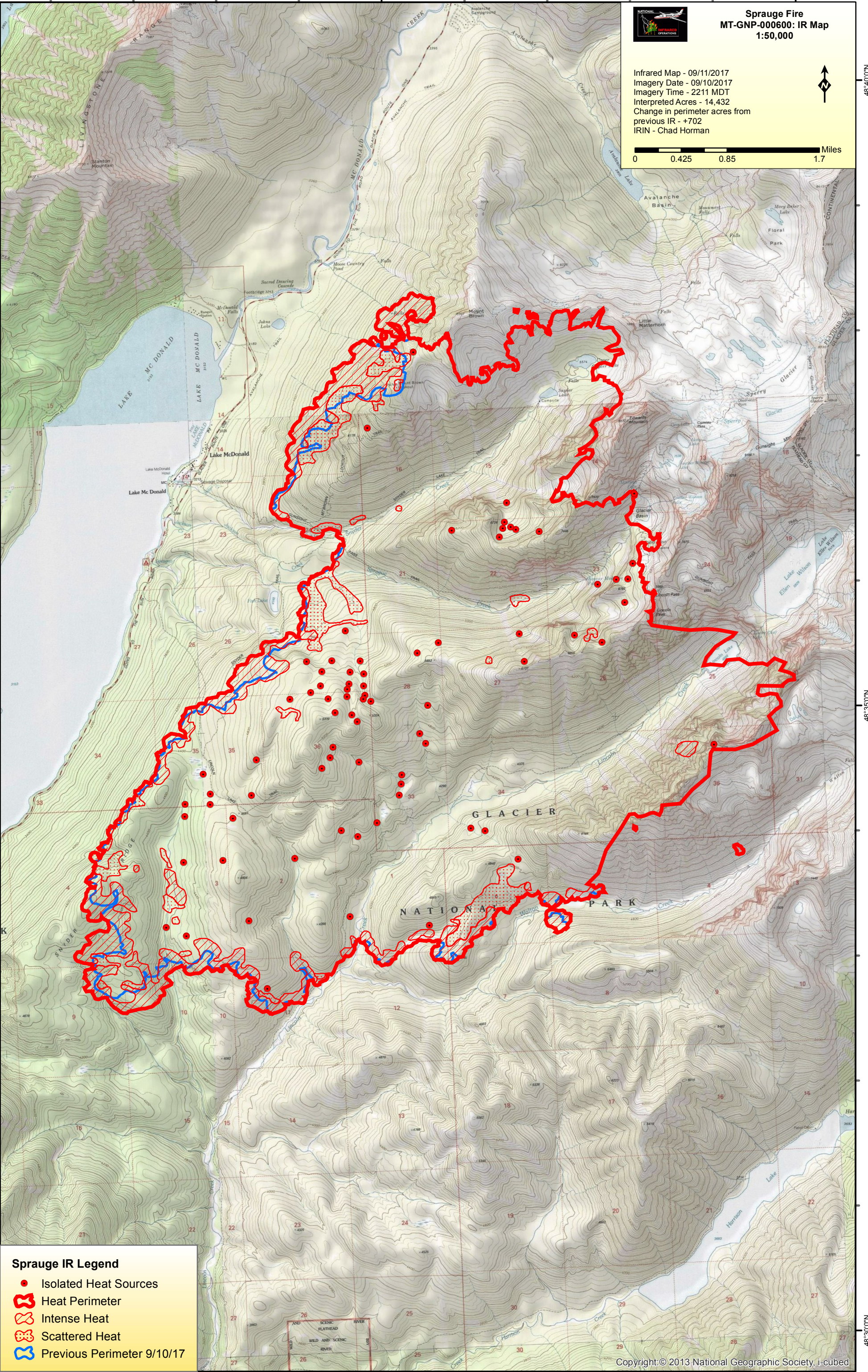
48°35'0"N

48°30'0"N

48°30'0"N

#### Sprague IR Legend

- Isolated Heat Sources
- Heat Perimeter
- Intense Heat
- Scattered Heat
- Previous Perimeter 9/10/17



113°55'0"W

113°50'0"W

113°45'0"W