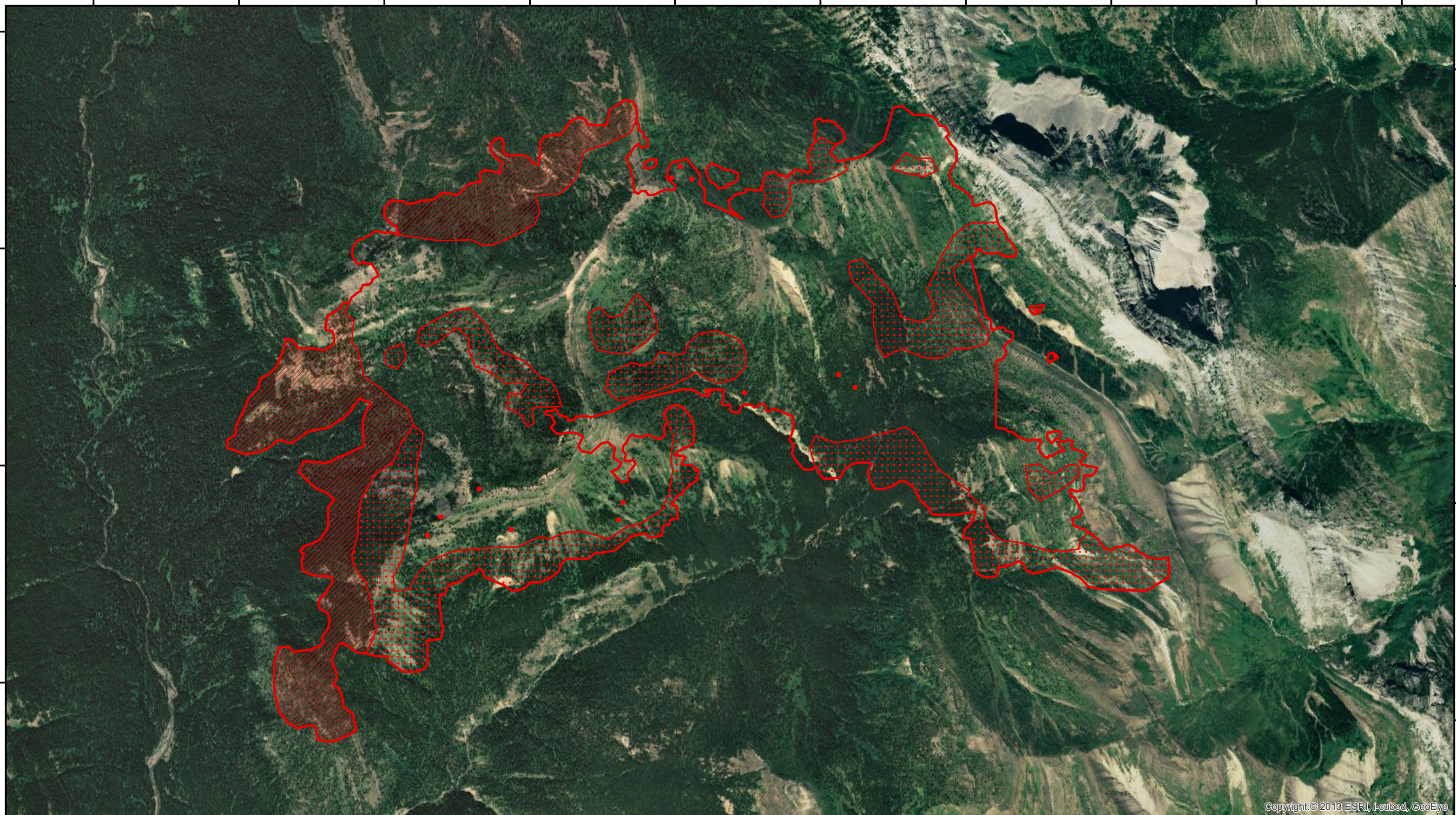


113°2'30"W 113°2'W 113°1'30"W 113°1'W 113°0'30"W 113°0'W 112°59'30"W 112°59'W 112°58'30"W 112°58'W

48°6'N  
48°5'30"N  
48°5'N  
48°4'30"N

48°6'N  
48°5'30"N  
48°5'N  
48°4'30"N



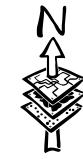
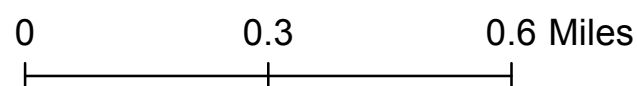
Copyright © 2013 ESRI, I-cubed, GeoEye

113°2'30"W 113°2'W 113°1'30"W 113°1'W 113°0'30"W 113°0'W 112°59'30"W 112°59'W 112°58'30"W 112°58'W

# Strawberry MT-FNF-000666

Infrared Interpretation  
Imagery Date: 09/05/2017 0232 MDT  
Interpreted Size: 1,190 Acres

- Isolated Heat
- ◡ Intense Heat
- ◡ Heat Perimeter
- ◡ Scattered Heat



IRIN: Lauren Miller  
Map Produced:  
09/05/2017 0330 MDT

