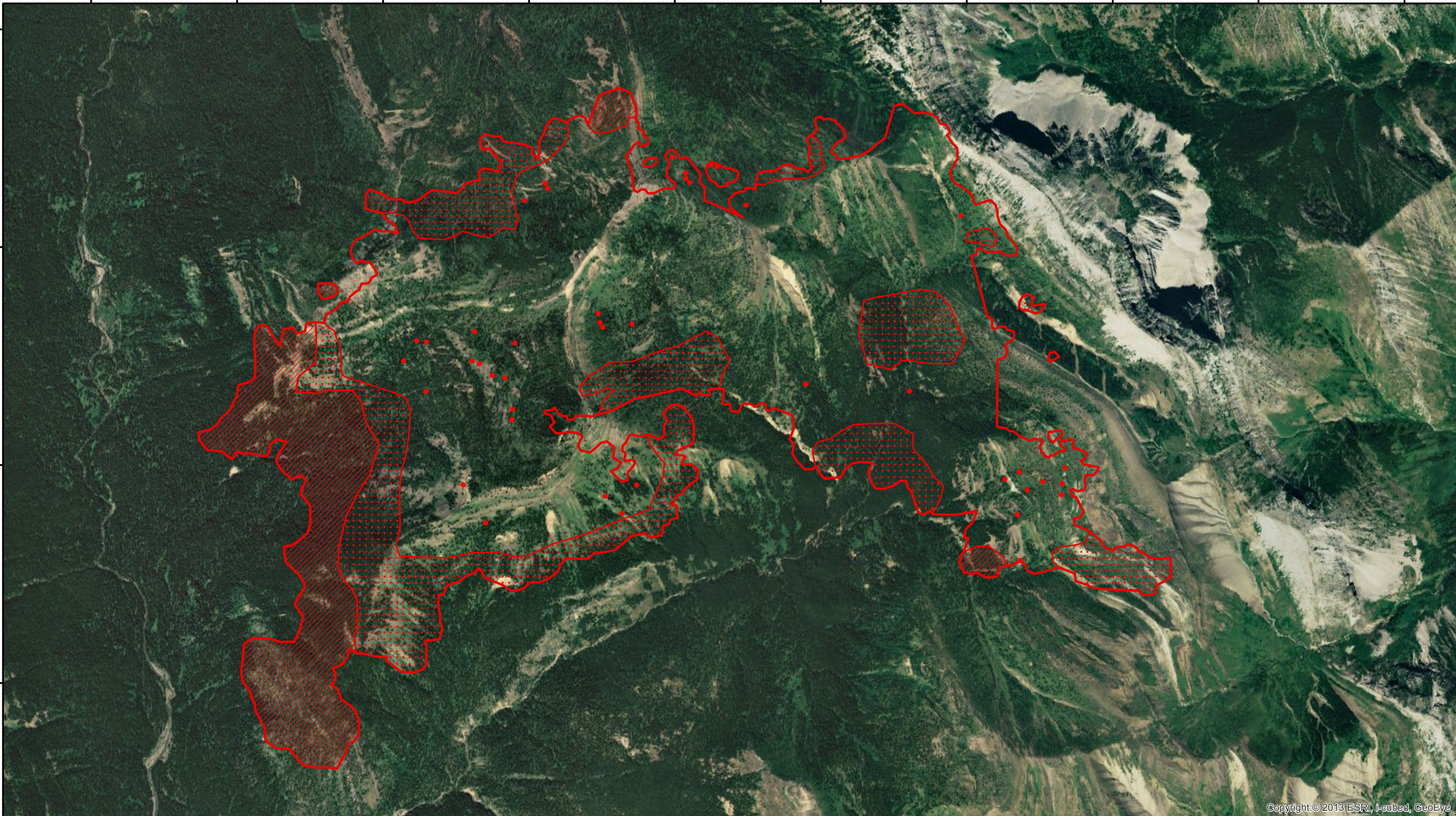


113°2'30"W 113°2'W 113°1'30"W 113°1'W 113°0'30"W 113°0'W 112°59'30"W 112°59'W 112°58'30"W 112°58'W

48°6'N
48°5'30"N
48°5'N
48°4'30"N

48°6'N
48°5'30"N
48°5'N
48°4'30"N



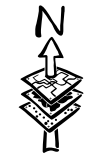
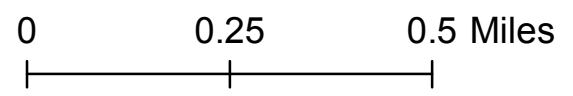
Copyright © 2013 ESRI, I-cubed, GeoEye

113°2'30"W 113°2'W 113°1'30"W 113°1'W 113°0'30"W 113°0'W 112°59'30"W 112°59'W 112°58'30"W 112°58'W

Strawberry
MT-FNF-000666

Infrared Interpretation
Imagery Date: 09/05/2017 2210 MDT
Interpreted Size: 1,273 Acres

- Isolated Heat
- ◌ Heat Perimeter
- ▨ Intense Heat
- ◌◌◌ Scattered Heat



IRIN: Lauren Miller
Map Produced:
09/06/2017 0115MDT

