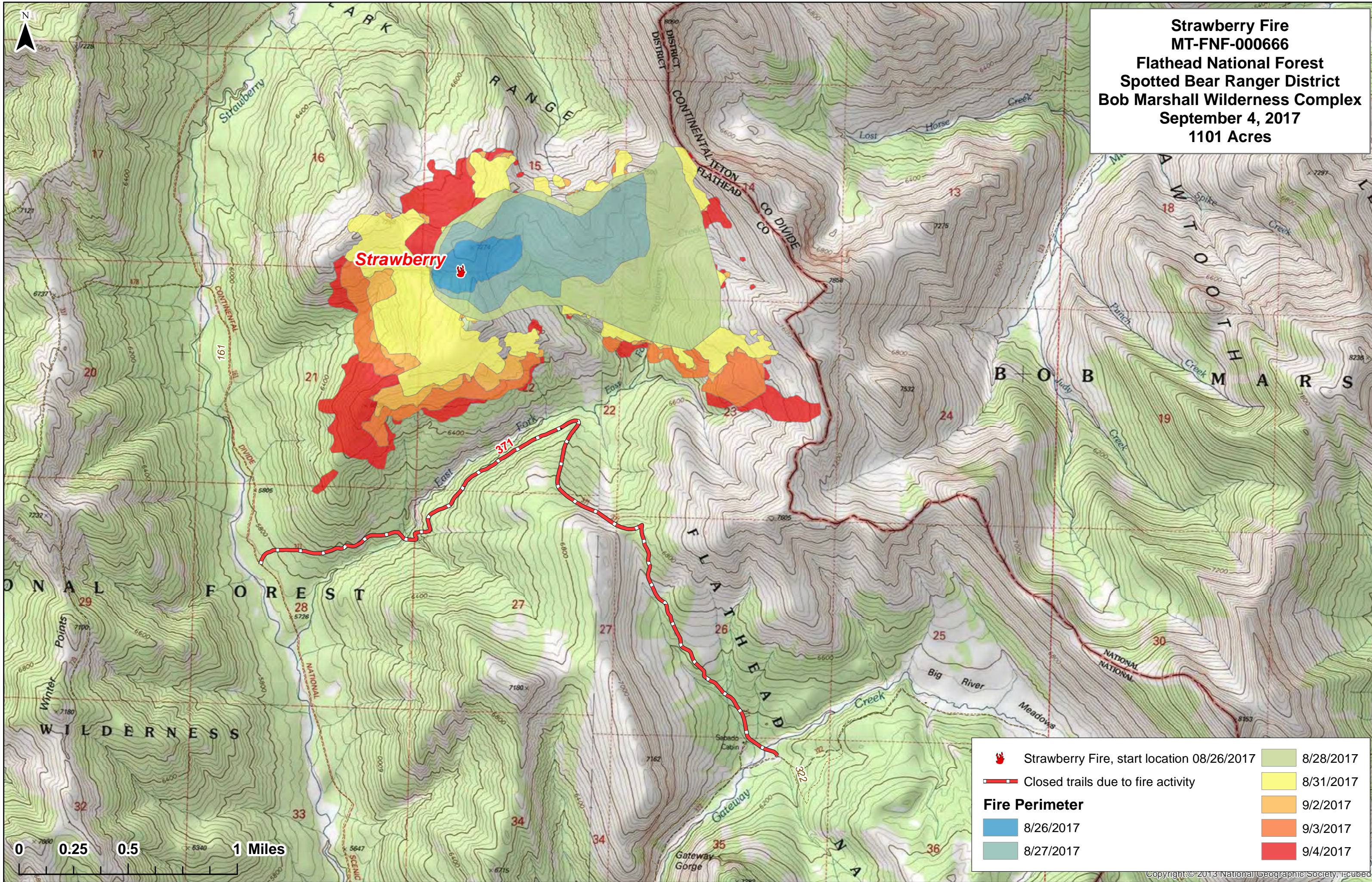

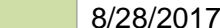

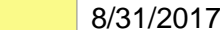
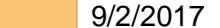
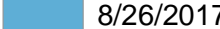
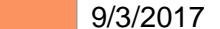
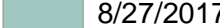
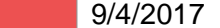


Strawberry Fire
MT-FNF-000666
Flathead National Forest
Spotted Bear Ranger District
Bob Marshall Wilderness Complex
September 4, 2017
1101 Acres



	Strawberry Fire, start location 08/26/2017		8/28/2017
	Closed trails due to fire activity		8/31/2017
Fire Perimeter			9/2/2017
	8/26/2017		9/3/2017
	8/27/2017		9/4/2017

0 0.25 0.5 1 Miles