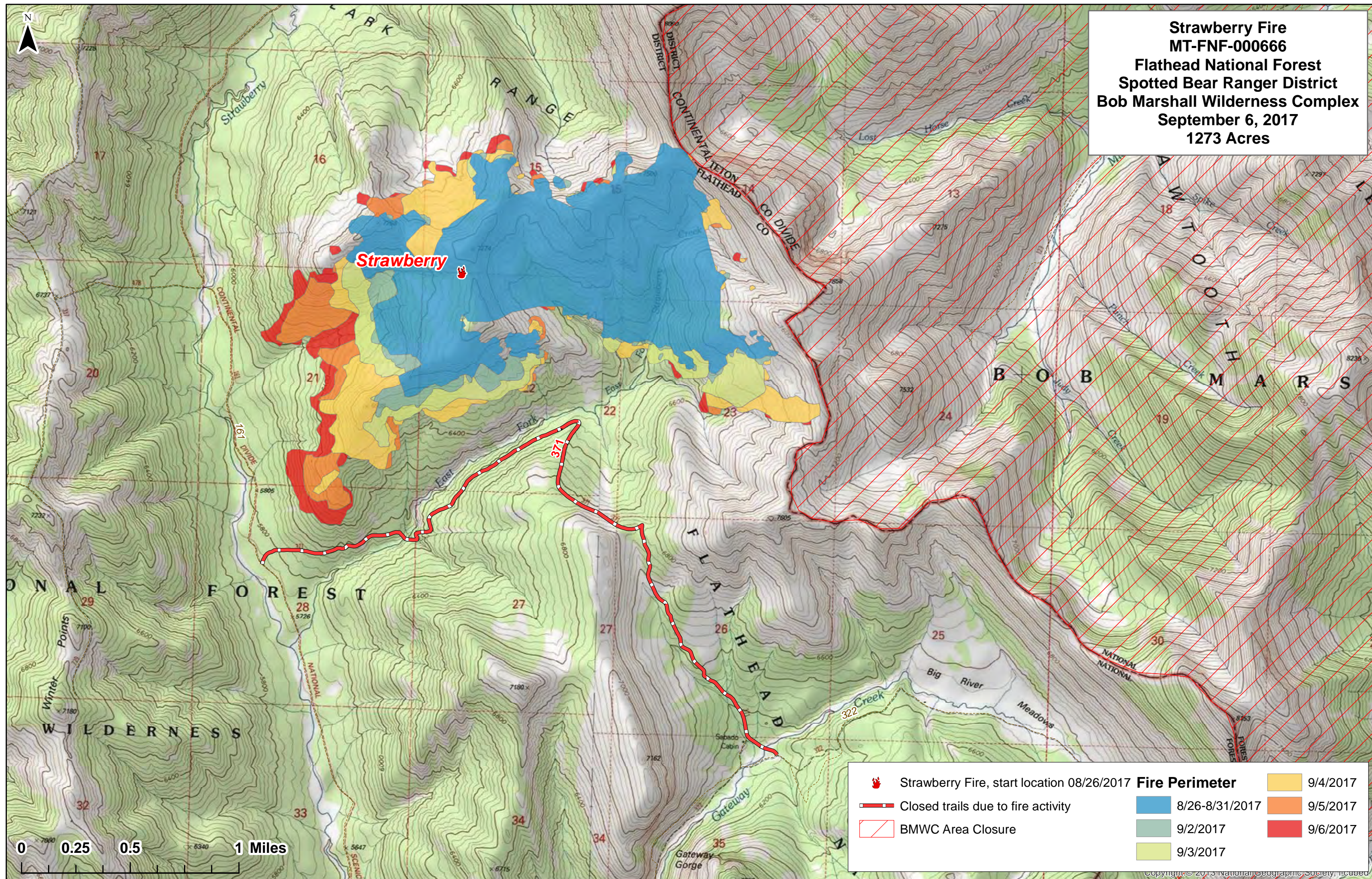

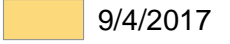

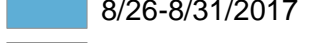
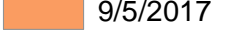

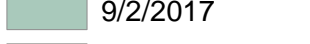
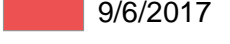
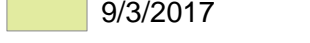


Strawberry Fire
MT-FNF-000666
Flathead National Forest
Spotted Bear Ranger District
Bob Marshall Wilderness Complex
September 6, 2017
1273 Acres



0 0.25 0.5 1 Miles

	Strawberry Fire, start location 08/26/2017	Fire Perimeter		9/4/2017
	Closed trails due to fire activity			8/26-8/31/2017 9/5/2017
	BMWC Area Closure			9/2/2017 9/6/2017
				9/3/2017