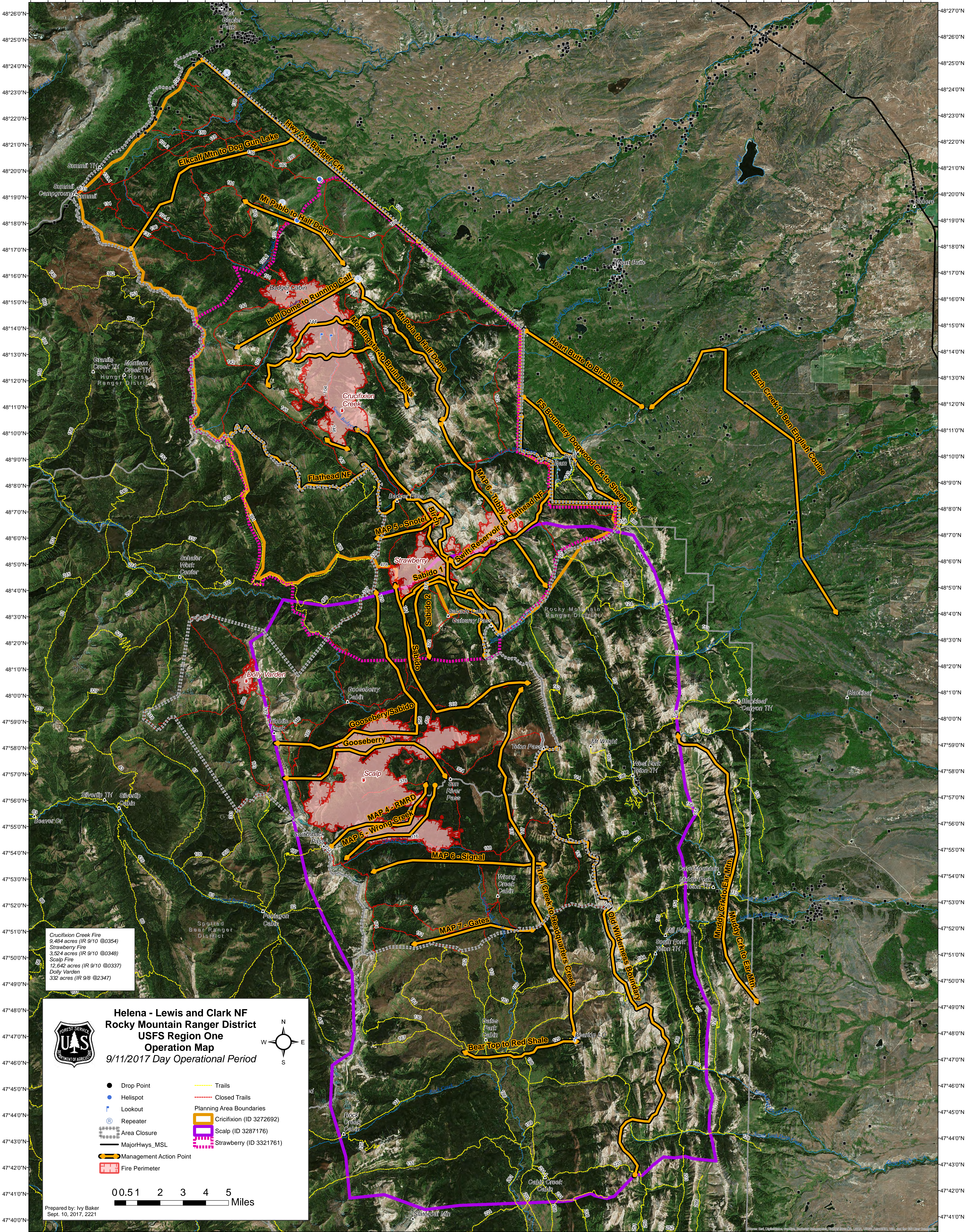


113°23'0"W 113°21'0"W 113°19'0"W 113°17'0"W 113°15'0"W 113°13'0"W 113°11'0"W 113°9'0"W 113°7'0"W 113°5'0"W 113°3'0"W 113°1'0"W 112°59'0"W 112°57'0"W 112°55'0"W 112°53'0"W 112°51'0"W 112°49'0"W 112°47'0"W 112°45'0"W 112°43'0"W 112°41'0"W 112°39'0"W 112°37'0"W 112°35'0"W 112°33'0"W



Crucifixion Creek Fire
9,484 acres (IR 9/10 @0354)
Strawberry Fire
3,524 acres (IR 9/10 @0348)
Scalp Fire
12,642 acres (IR 9/10 @0337)
Dolly Varden
332 acres (IR 9/8 @2347)

USFS
Rocky Mountain Ranger District
USFS Region One
Operation Map
9/11/2017 Day Operational Period

● Drop Point
● Helispot
⚡ Lookout
Ⓜ Repeater
Ⓜ Area Closure
Ⓜ MajorHwys_MSL
➔ Management Action Point
🔥 Fire Perimeter

— Trails
- - - Closed Trails
▭ Planning Area Boundaries
▭ Crucifixion (ID 3272692)
▭ Scalp (ID 3287176)
▭ Strawberry (ID 3321761)

0 0.5 1 2 3 4 5 Miles

Prepared by: Ivy Baker
Sept. 10, 2017, 2221

113°21'0"W 113°19'0"W 113°17'0"W 113°15'0"W 113°13'0"W 113°11'0"W 113°9'0"W 113°7'0"W 113°5'0"W 113°3'0"W 113°1'0"W 112°59'0"W 112°57'0"W 112°55'0"W 112°53'0"W 112°51'0"W 112°49'0"W 112°47'0"W 112°45'0"W 112°43'0"W 112°41'0"W 112°39'0"W 112°37'0"W 112°35'0"W 112°33'0"W 112°31'0"W