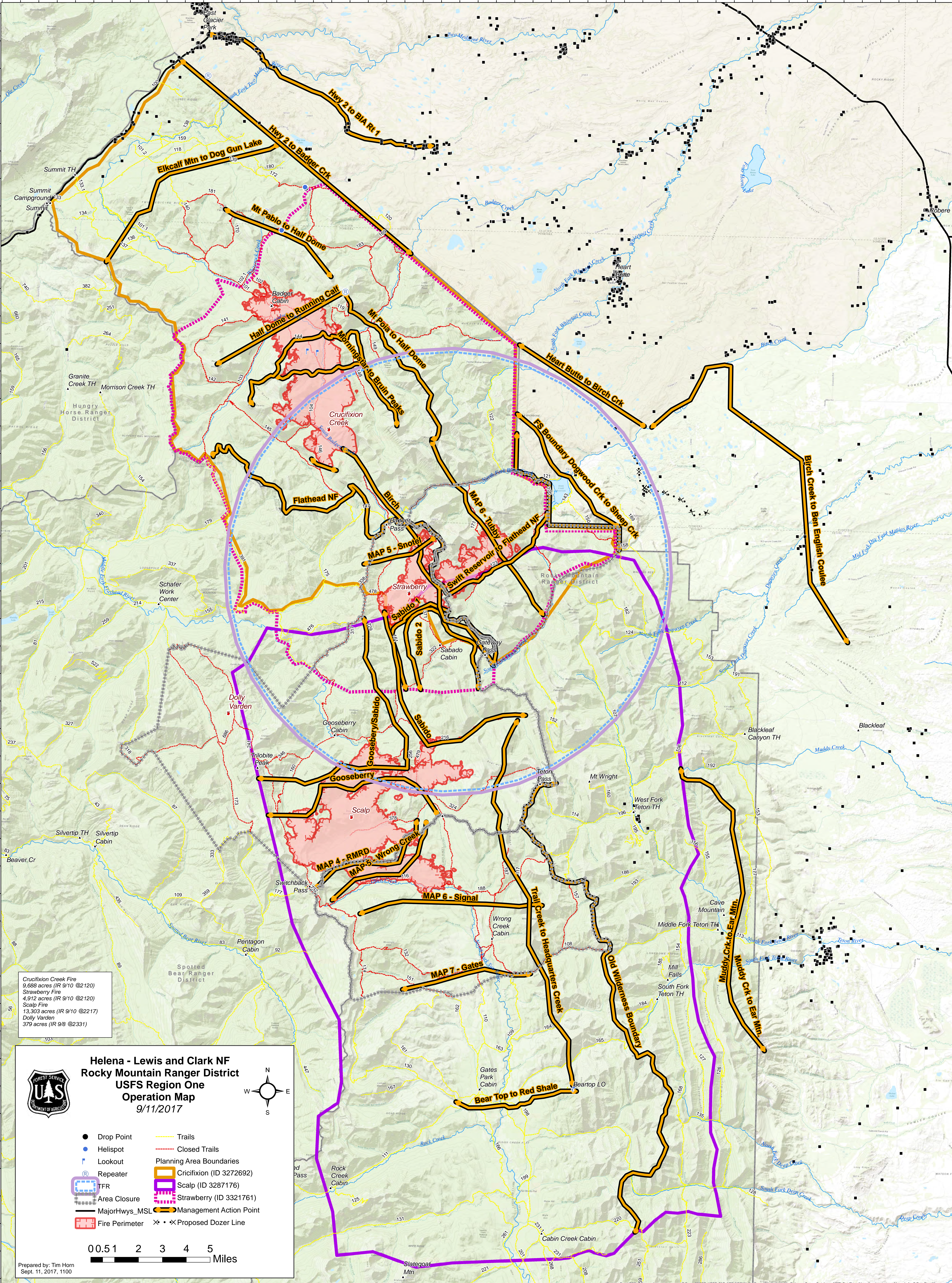

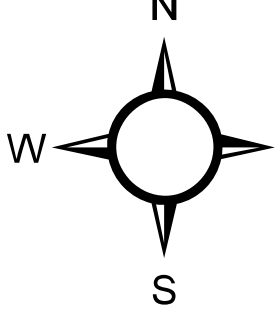


113°23'0"W 113°21'0"W 113°19'0"W 113°17'0"W 113°15'0"W 113°13'0"W 113°11'0"W 113°9'0"W 113°7'0"W 113°5'0"W 113°3'0"W 113°1'0"W 112°59'0"W 112°57'0"W 112°55'0"W 112°53'0"W 112°51'0"W 112°49'0"W 112°47'0"W 112°45'0"W 112°43'0"W 112°41'0"W 112°39'0"W 112°37'0"W 112°35'0"W 112°33'0"W



Crucifixion Creek Fire
9,686 acres (IR 9/10 @2120)
Strawberry Fire
4,912 acres (IR 9/10 @2120)
Scalp Fire
13,303 acres (IR 9/10 @2217)
Dolly Varden
379 acres (IR 9/8 @2331)

Helena - Lewis and Clark NF
Rocky Mountain Ranger District
USFS Region One
Operation Map
 9/11/2017

● Drop Point	— Trails
● Helispot	— Closed Trails
⌘ Lookout	— Planning Area Boundaries
Ⓡ Repeater	— Crucifixion (ID 3272692)
Ⓡ FTR	— Scalp (ID 3287176)
— Area Closure	— Strawberry (ID 3321761)
— MajorHwys_MSL	— Management Action Point
■ Fire Perimeter	✕ ✕ Proposed Dozer Line

0 0.5 1 2 3 4 5 Miles

Prepared by: Tim Horn
Sept. 11, 2017, 1100

113°21'0"W 113°19'0"W 113°17'0"W 113°15'0"W 113°13'0"W 113°11'0"W 113°9'0"W 113°7'0"W 113°5'0"W 113°3'0"W 113°1'0"W 112°59'0"W 112°57'0"W 112°55'0"W 112°53'0"W 112°51'0"W 112°49'0"W 112°47'0"W 112°45'0"W 112°43'0"W 112°41'0"W 112°39'0"W 112°37'0"W 112°35'0"W 112°33'0"W 112°31'0"W