


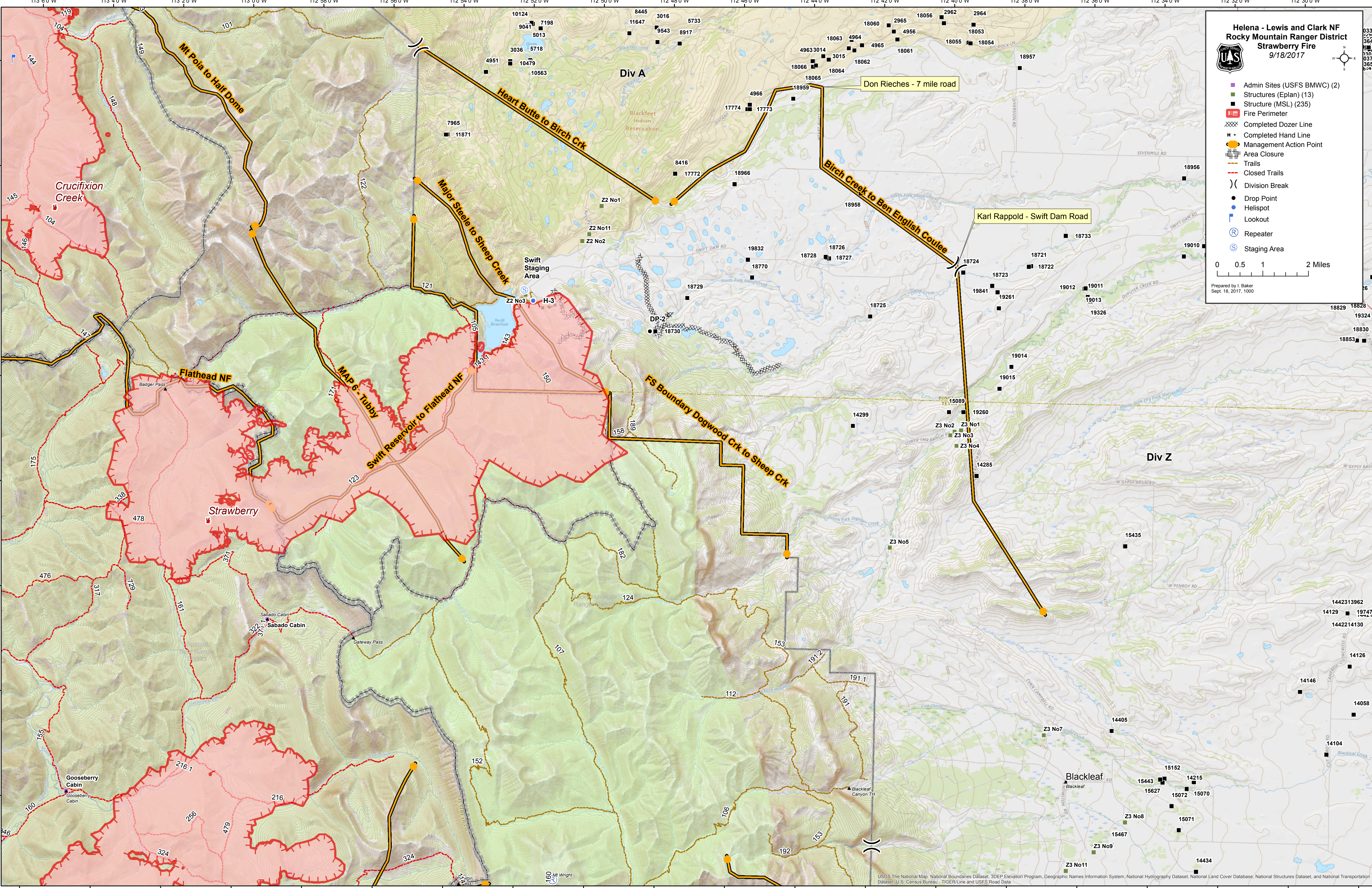
**Helena - Lewis and Clark NF
Rocky Mountain Ranger District
Strawberry Fire
9/18/2017**



- Admin Sites (USFS BMWC) (2)
- Structures (Eplan) (13)
- Structure (MSL) (235)
- Fire Perimeter
- X Completed Dozer Line
- Completed Hand Line
- Management Action Point
- Area Closure
- Trails
- Closed Trails
-) Division Break
- Drop Point
- Helispot
- Lookout
- Ⓡ Repeater
- Ⓢ Staging Area

0 0.5 1 2 Miles

Prepared by I. Baker
Sept. 18, 2017, 1000



USGS The National Map: National Boundaries Dataset, 3DEP Elevation Program, Geographic Names Information System, National Hydrography Dataset, National Land Cover Database, National Structures Dataset, and National Transportation Dataset; U.S. Census Bureau - TIGER/Line and USFS Road Data