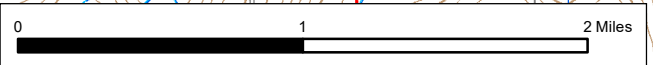
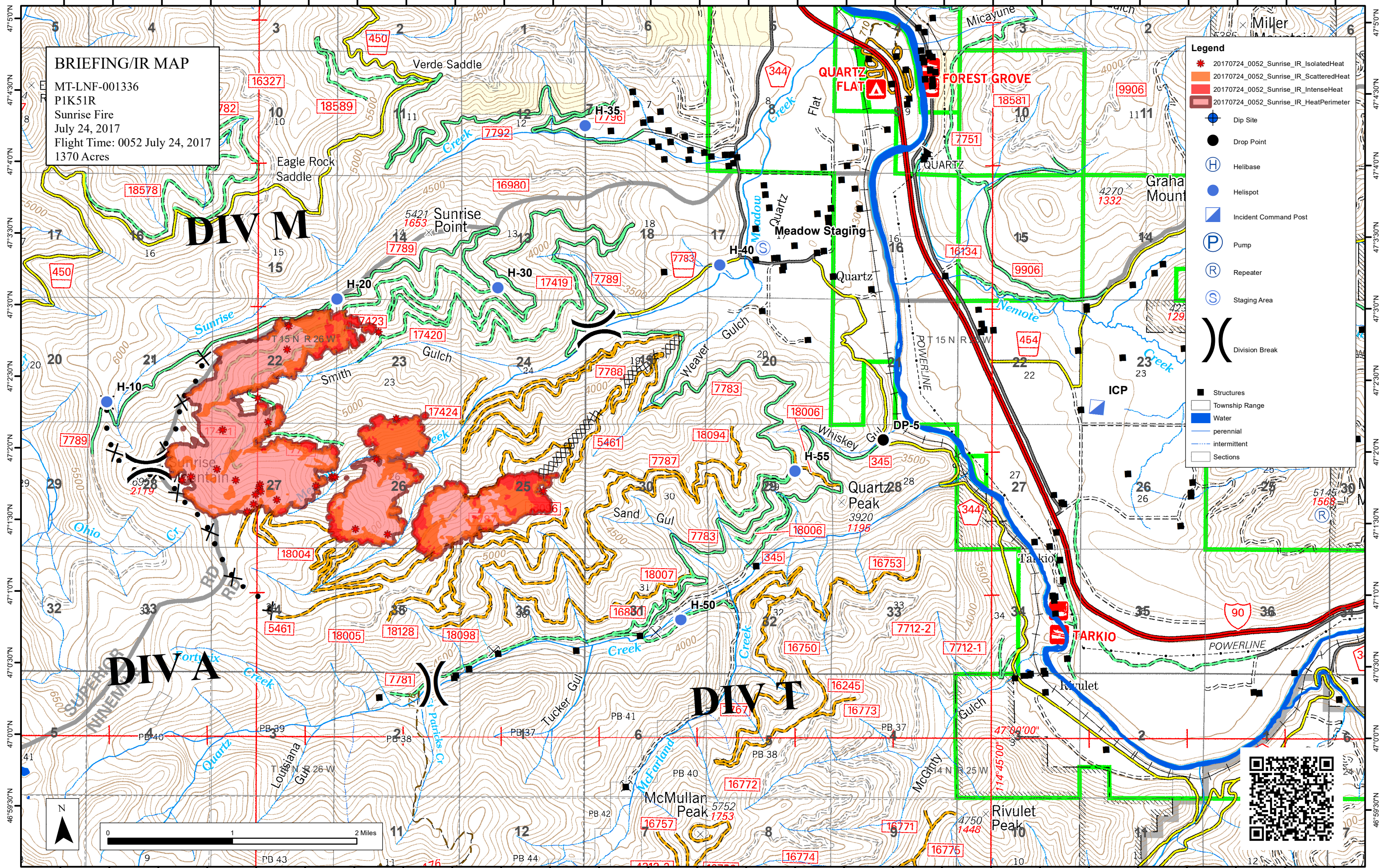


114°54'30"W 114°54'0"W 114°53'30"W 114°53'0"W 114°52'30"W 114°52'0"W 114°51'30"W 114°51'0"W 114°50'30"W 114°50'0"W 114°49'30"W 114°49'0"W 114°48'30"W 114°48'0"W 114°47'30"W 114°47'0"W 114°46'30"W 114°46'0"W 114°45'30"W 114°45'0"W 114°44'30"W 114°44'0"W 114°43'30"W 114°43'0"W 114°42'30"W 114°42'0"W 114°41'30"W

BRIEFING/IR MAP
MT-LNF-001336
P1K51R
Sunrise Fire
July 24, 2017
Flight Time: 0052 July 24, 2017
1370 Acres

Legend

- 20170724_0052_Sunrise_IR_IsolatedHeat
- 20170724_0052_Sunrise_IR_ScatteredHeat
- 20170724_0052_Sunrise_IR_IntenseHeat
- 20170724_0052_Sunrise_IR_HeatPerimeter
- Dip Site
- Drop Point
- Helibase
- Helispot
- Incident Command Post
- Pump
- Repeater
- Staging Area
- Division Break
- Structures
- Township Range
- Water
- perennial
- intermittent
- Sections



114°54'30"W 114°54'0"W 114°53'30"W 114°53'0"W 114°52'30"W 114°52'0"W 114°51'30"W 114°51'0"W 114°50'30"W 114°50'0"W 114°49'30"W 114°49'0"W 114°48'30"W 114°48'0"W 114°47'30"W 114°47'0"W 114°46'30"W 114°46'0"W 114°45'30"W 114°45'0"W 114°44'30"W 114°44'0"W 114°43'30"W 114°43'0"W 114°42'30"W 114°42'0"W 114°41'30"W