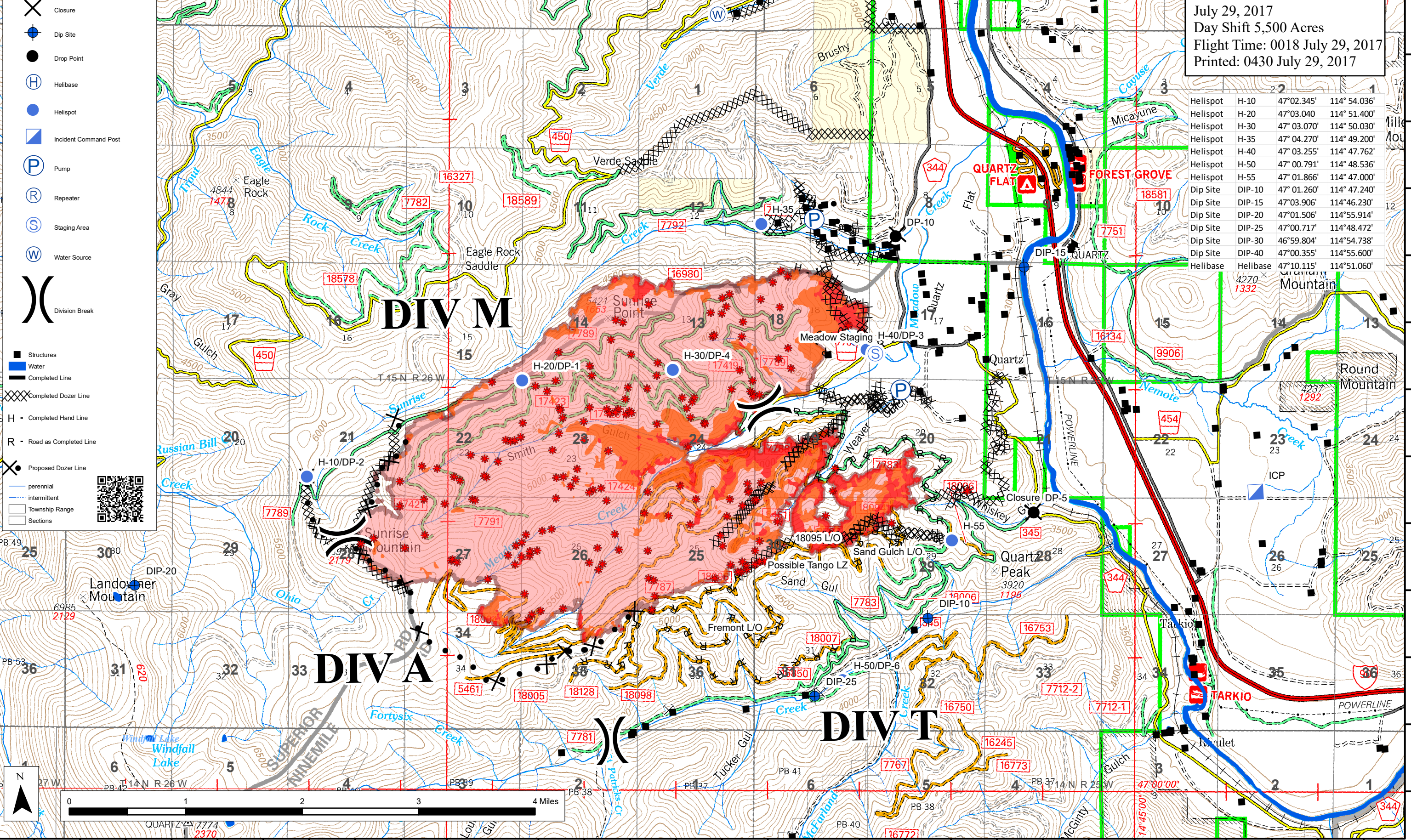


- Legend**
- 20170729_0018_Sunrise_IR_IsolatedHeat
 - 20170729_0018_Sunrise_IR_ScatteredHeat
 - 20170729_0018_Sunrise_IR_IntenseHeat
 - 20170729_0018_Sunrise_IR_HeatPerimeter
 - Closure
 - Dip Site
 - Drop Point
 - Helibase
 - Helispot
 - Incident Command Post
 - Pump
 - Repeater
 - Staging Area
 - Water Source
 - Division Break
 - Structures
 - Water
 - Completed Line
 - Completed Dozer Line
 - Completed Hand Line
 - Road as Completed Line
 - Proposed Dozer Line
 - perennial
 - intermittent
 - Township Range
 - Sections

BRIEFING/IR MAP
 MT-LNF-001336
 P1K51R-0116
 July 29, 2017
 Day Shift 5,500 Acres
 Flight Time: 0018 July 29, 2017
 Printed: 0430 July 29, 2017

Helispot	H-10	47°02.345'	114° 54.036'
Helispot	H-20	47°03.040'	114° 51.400'
Helispot	H-30	47° 03.070'	114° 50.030'
Helispot	H-35	47° 04.270'	114° 49.200'
Helispot	H-40	47° 03.255'	114° 47.762'
Helispot	H-50	47° 00.791'	114° 48.536'
Helispot	H-55	47° 01.866'	114° 47.000'
Dip Site	DIP-10	47° 01.260'	114° 47.240'
Dip Site	DIP-15	47°03.906'	114°46.230'
Dip Site	DIP-20	47°01.506'	114°55.914'
Dip Site	DIP-25	47°00.717'	114°48.472'
Dip Site	DIP-30	46°59.804'	114°54.738'
Dip Site	DIP-40	47°00.355'	114°55.600'
Helibase	Helibase	47°10.115'	114°51.060'



114°57'0"W 114°56'30"W 114°56'0"W 114°55'30"W 114°55'0"W 114°54'30"W 114°54'0"W 114°53'30"W 114°53'0"W 114°52'30"W 114°52'0"W 114°51'30"W 114°51'0"W 114°50'30"W 114°50'0"W 114°49'30"W 114°49'0"W 114°48'30"W 114°48'0"W 114°47'30"W 114°47'0"W 114°46'30"W 114°46'0"W 114°45'30"W 114°45'0"W 114°44'30"W 114°44'0"W 114°43'30"W 114°43'0"W 114°42'30"W