

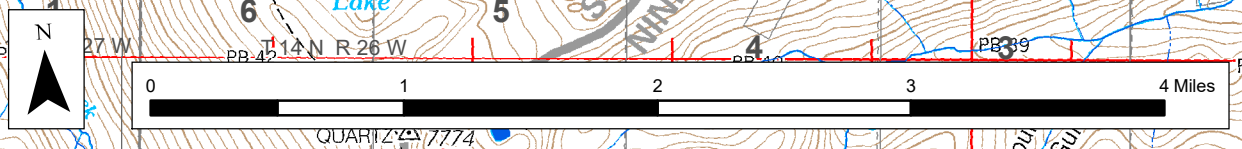
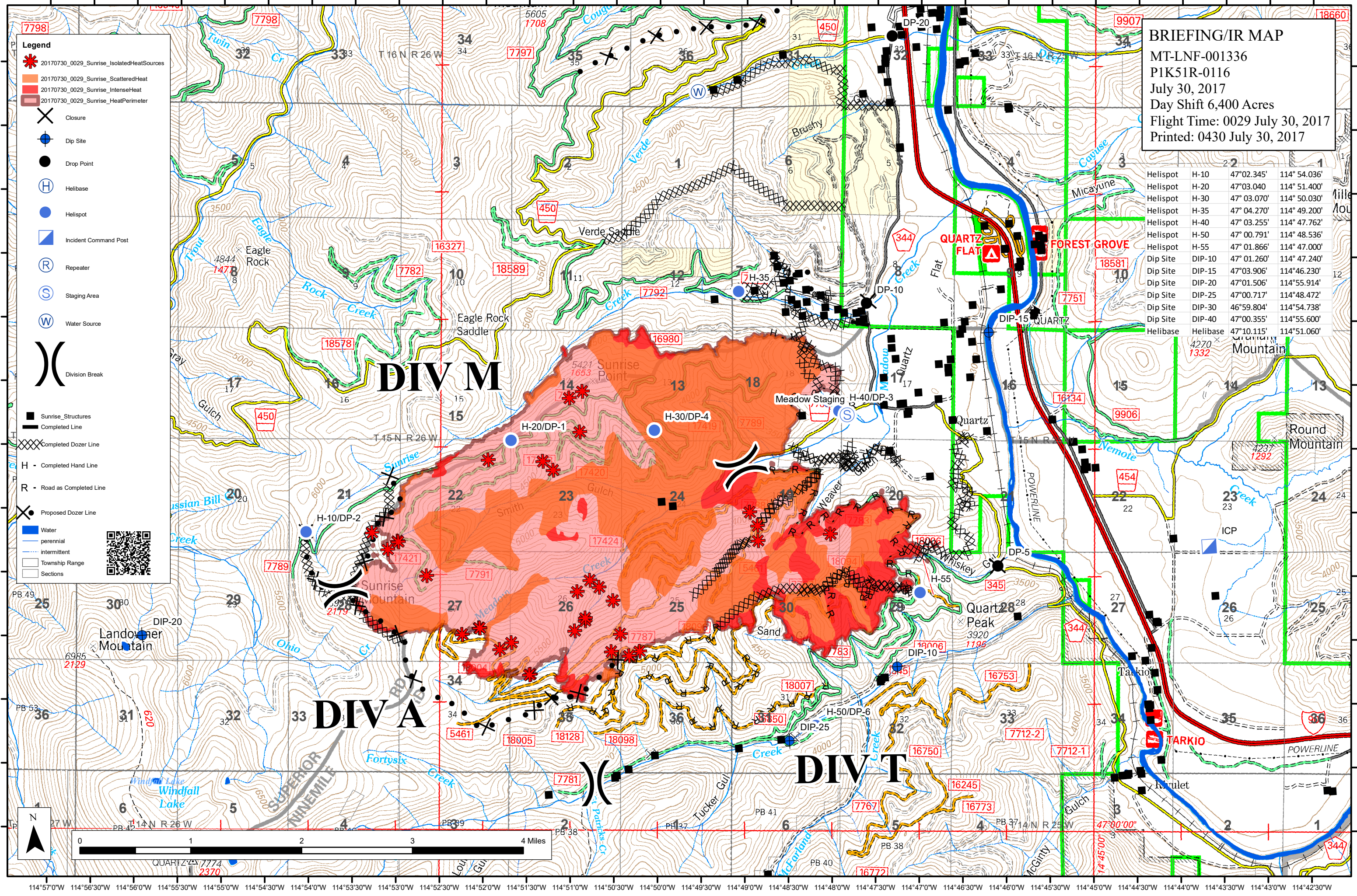
Legend

- 20170730_0029_Sunrise_IsolatedHeatSources
- 20170730_0029_Sunrise_ScatteredHeat
- 20170730_0029_Sunrise_IntenseHeat
- 20170730_0029_Sunrise_HeatPerimeter
- Closure
- Dip Site
- Drop Point
- Helibase
- Helispot
- Incident Command Post
- Repeater
- Staging Area
- Water Source
- Division Break
- Sunrise Structures
- Completed Line
- Completed Dozer Line
- Completed Hand Line
- Road as Completed Line
- Proposed Dozer Line
- Water: perennial, intermittent
- Township Range
- Sections



BRIEFING/IR MAP
 MT-LNF-001336
 P1K51R-0116
 July 30, 2017
 Day Shift 6,400 Acres
 Flight Time: 0029 July 30, 2017
 Printed: 0430 July 30, 2017

Helispot	H-10	47°02.345'	114° 54.036'
Helispot	H-20	47°03.040'	114° 51.400'
Helispot	H-30	47° 03.070'	114° 50.030'
Helispot	H-35	47° 04.270'	114° 49.200'
Helispot	H-40	47° 03.255'	114° 47.762'
Helispot	H-50	47° 00.791'	114° 48.536'
Helispot	H-55	47° 01.866'	114° 47.000'
Dip Site	DIP-10	47° 01.260'	114° 47.240'
Dip Site	DIP-15	47°03.906'	114°46.230'
Dip Site	DIP-20	47°01.506'	114°55.914'
Dip Site	DIP-25	47°00.717'	114°48.472'
Dip Site	DIP-30	46°59.804'	114°54.738'
Dip Site	DIP-40	47°00.355'	114°55.600'
Helibase	Helibase	47°10.115'	114°51.060'



114°57'0"W 114°56'30"W 114°56'0"W 114°55'30"W 114°55'0"W 114°54'30"W 114°54'0"W 114°53'30"W 114°53'0"W 114°52'30"W 114°52'0"W 114°51'30"W 114°51'0"W 114°50'30"W 114°50'0"W 114°49'30"W 114°49'0"W 114°48'30"W 114°48'0"W 114°47'30"W 114°47'0"W 114°46'30"W 114°46'0"W 114°45'30"W 114°45'0"W 114°44'30"W 114°44'0"W 114°43'30"W 114°43'0"W 114°42'30"W