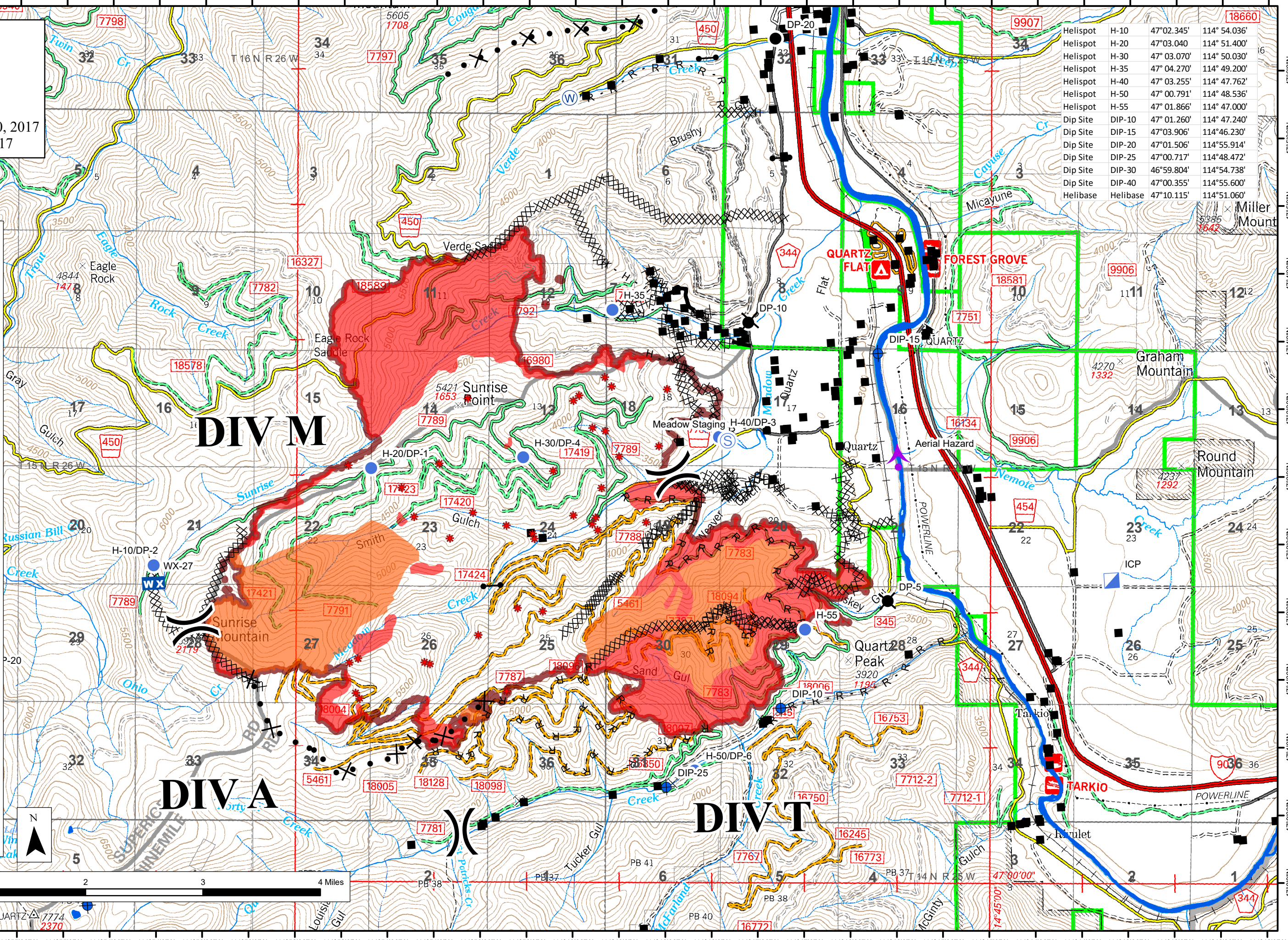


BRIEFING MAP
 MT-LNF-001336
 PIK51R-0116
 July 31, 2017
 Day Shift 8,200 Acres
 Flight Time: 2207 July 30, 2017
 Printed: 0430 July 31, 2017

Helispot	H-10	47°02.345'	114° 54.036'
Helispot	H-20	47°03.040'	114° 51.400'
Helispot	H-30	47° 03.070'	114° 50.030'
Helispot	H-35	47° 04.270'	114° 49.200'
Helispot	H-40	47° 03.255'	114° 47.762'
Helispot	H-50	47° 00.791'	114° 48.536'
Helispot	H-55	47° 01.866'	114° 47.000'
Dip Site	DIP-10	47° 01.260'	114° 47.240'
Dip Site	DIP-15	47°03.906'	114°46.230'
Dip Site	DIP-20	47°01.506'	114°55.914'
Dip Site	DIP-25	47°00.717'	114°48.472'
Dip Site	DIP-30	46°59.804'	114°54.738'
Dip Site	DIP-40	47°00.355'	114°55.600'
Helibase	Helibase	47°10.115'	114°51.060'

- Legend**
- * 20170730_2207_Sunrise_IsolatedHeatSources
 - 20170730_2207_Sunrise_ScatteredHeat
 - 20170730_2207_Sunrise_IntenseHeat
 - Completed Line
 - Completed Dozer Line
 - Completed Hand Line
 - Road as Completed Line
 - Proposed Dozer Line
 - 20170730_2207_Sunrise_HeatPerimeter
 - * Aerial Hazard
 - X Closure
 - Dip Site
 - Drop Point
 - Gate
 - H Helibase
 - Helispot
 - ▲ Incident Command Post
 - WX Mobile Weather Unit
 - R Repeater
 - S Staging Area
 - W Water Source
 - Division Break
 - Sunrise_Structures
 - Water
perennial
 - intermittent
 - Township Range
 - Sections



114°57'30"W 114°57'00"W 114°56'30"W 114°56'00"W 114°55'30"W 114°55'00"W 114°54'30"W 114°54'00"W 114°53'30"W 114°53'00"W 114°52'30"W 114°52'00"W 114°51'30"W 114°51'00"W 114°50'30"W 114°50'00"W 114°49'30"W 114°49'00"W 114°48'30"W 114°48'00"W 114°47'30"W 114°47'00"W 114°46'30"W 114°46'00"W 114°45'30"W 114°45'00"W 114°44'30"W 114°44'00"W 114°43'30"W 114°43'00"W 114°42'30"W 114°42'00"W