

114°43'W 114°42'W 114°41'W 114°40'W 114°39'W 114°38'W 114°37'W 114°36'W 114°35'W 114°34'W 114°33'W

Air Ops Map

Burdette Fire

MT-LNF-001330

Aug 6, 2017 0600



0 1 2
Miles

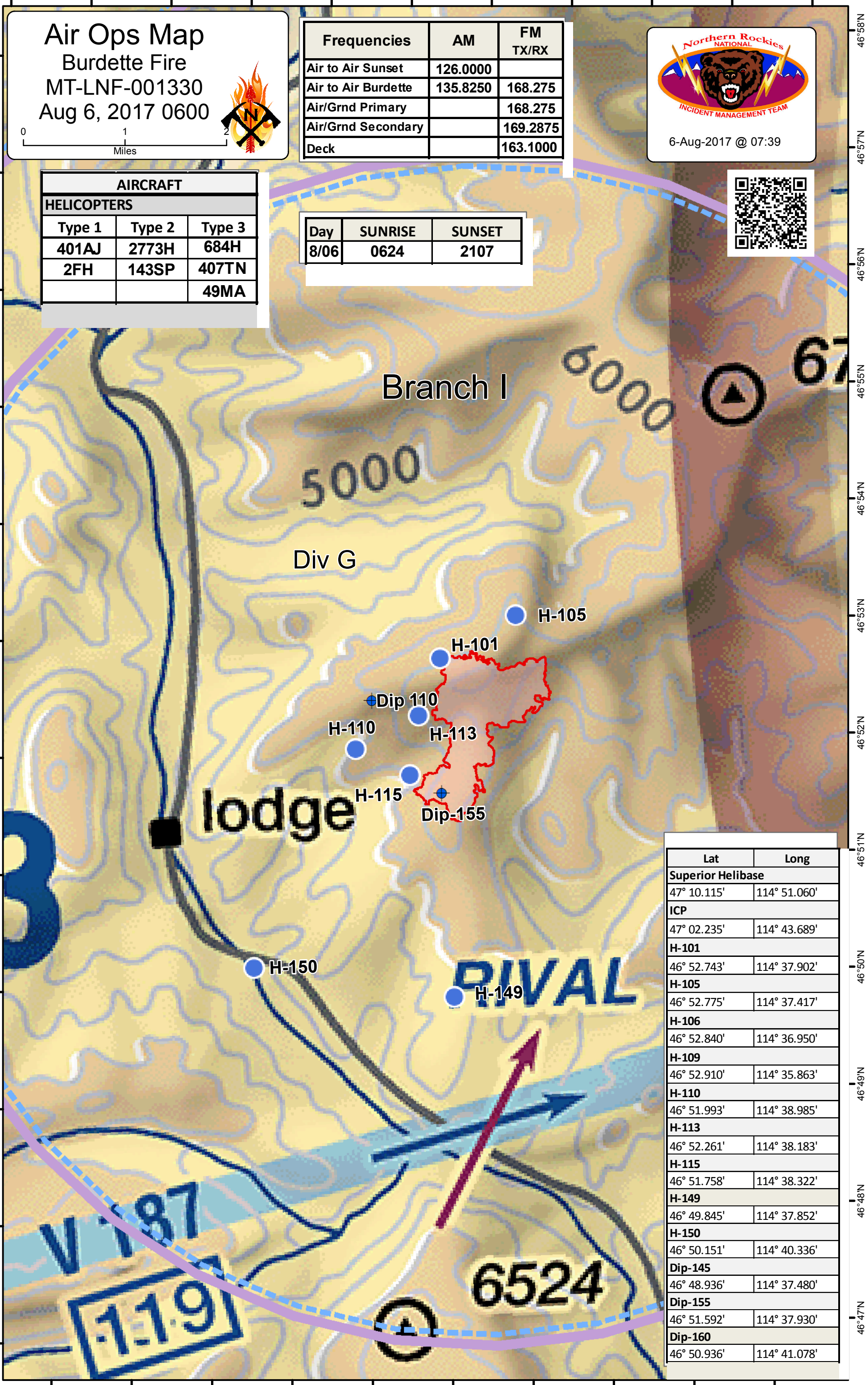
Frequencies	AM	FM TX/RX
Air to Air Sunset	126.0000	
Air to Air Burdette	135.8250	168.275
Air/Grnd Primary		168.275
Air/Grnd Secondary		169.2875
Deck		163.1000

6-Aug-2017 @ 07:39



AIRCRAFT		
HELICOPTERS		
Type 1	Type 2	Type 3
401AJ	2773H	684H
2FH	143SP	407TN
		49MA

Day	SUNRISE	SUNSET
8/06	0624	2107



Lat	Long
Superior Helibase	
47° 10.115'	114° 51.060'
ICP	
47° 02.235'	114° 43.689'
H-101	
46° 52.743'	114° 37.902'
H-105	
46° 52.775'	114° 37.417'
H-106	
46° 52.840'	114° 36.950'
H-109	
46° 52.910'	114° 35.863'
H-110	
46° 51.993'	114° 38.985'
H-113	
46° 52.261'	114° 38.183'
H-115	
46° 51.758'	114° 38.322'
H-149	
46° 49.845'	114° 37.852'
H-150	
46° 50.151'	114° 40.336'
Dip-145	
46° 48.936'	114° 37.480'
Dip-155	
46° 51.592'	114° 37.930'
Dip-160	
46° 50.936'	114° 41.078'

114°43'W 114°42'W 114°41'W 114°40'W 114°39'W 114°38'W 114°37'W 114°36'W 114°35'W 114°34'W