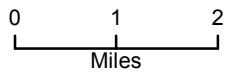


Air Ops Map

Sunrise Fire

MT-LNF-001336

Aug 6, 2017 0600



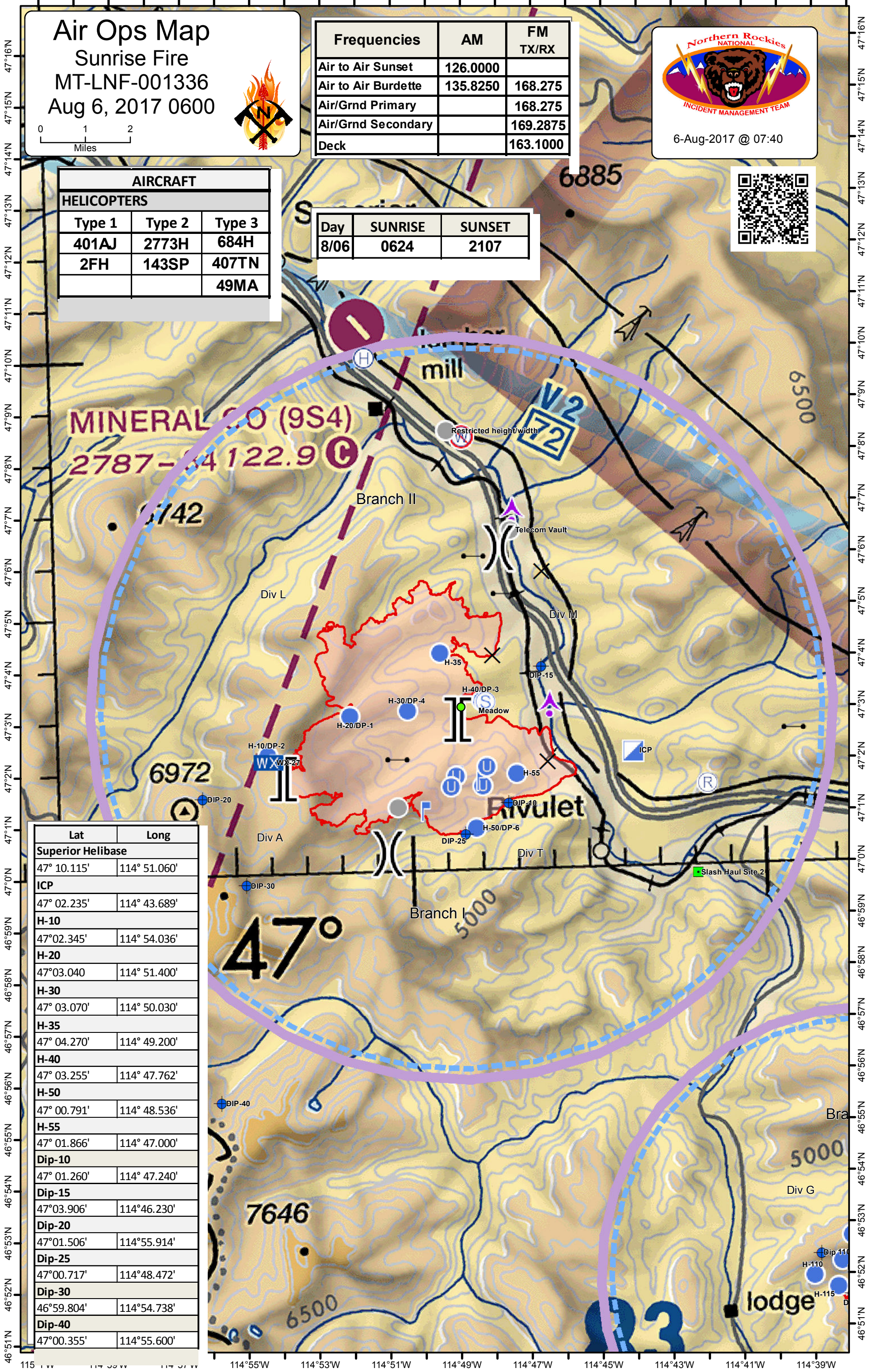
Frequencies	AM	FM TX/RX
Air to Air Sunset	126.0000	
Air to Air Burdette	135.8250	168.275
Air/Grnd Primary		168.275
Air/Grnd Secondary		169.2875
Deck		163.1000

6-Aug-2017 @ 07:40



AIRCRAFT		
HELICOPTERS		
Type 1	Type 2	Type 3
401AJ	2773H	684H
2FH	143SP	407TN
		49MA

Day	SUNRISE	SUNSET
8/06	0624	2107



Lat	Long
Superior Helibase	
47° 10.115'	114° 51.060'
ICP	
47° 02.235'	114° 43.689'
H-10	
47° 02.345'	114° 54.036'
H-20	
47° 03.040'	114° 51.400'
H-30	
47° 03.070'	114° 50.030'
H-35	
47° 04.270'	114° 49.200'
H-40	
47° 03.255'	114° 47.762'
H-50	
47° 00.791'	114° 48.536'
H-55	
47° 01.866'	114° 47.000'
Dip-10	
47° 01.260'	114° 47.240'
Dip-15	
47° 03.906'	114° 46.230'
Dip-20	
47° 01.506'	114° 55.914'
Dip-25	
47° 00.717'	114° 48.472'
Dip-30	
46° 59.804'	114° 54.738'
Dip-40	
47° 00.355'	114° 55.600'