

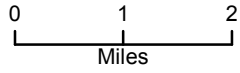
114°59'W 114°57'W 114°55'W 114°53'W 114°51'W 114°49'W 114°47'W 114°45'W 114°43'W 114°41'W 114°39'W

Air Ops Map

Sunrise Fire

MT-LNF-001336

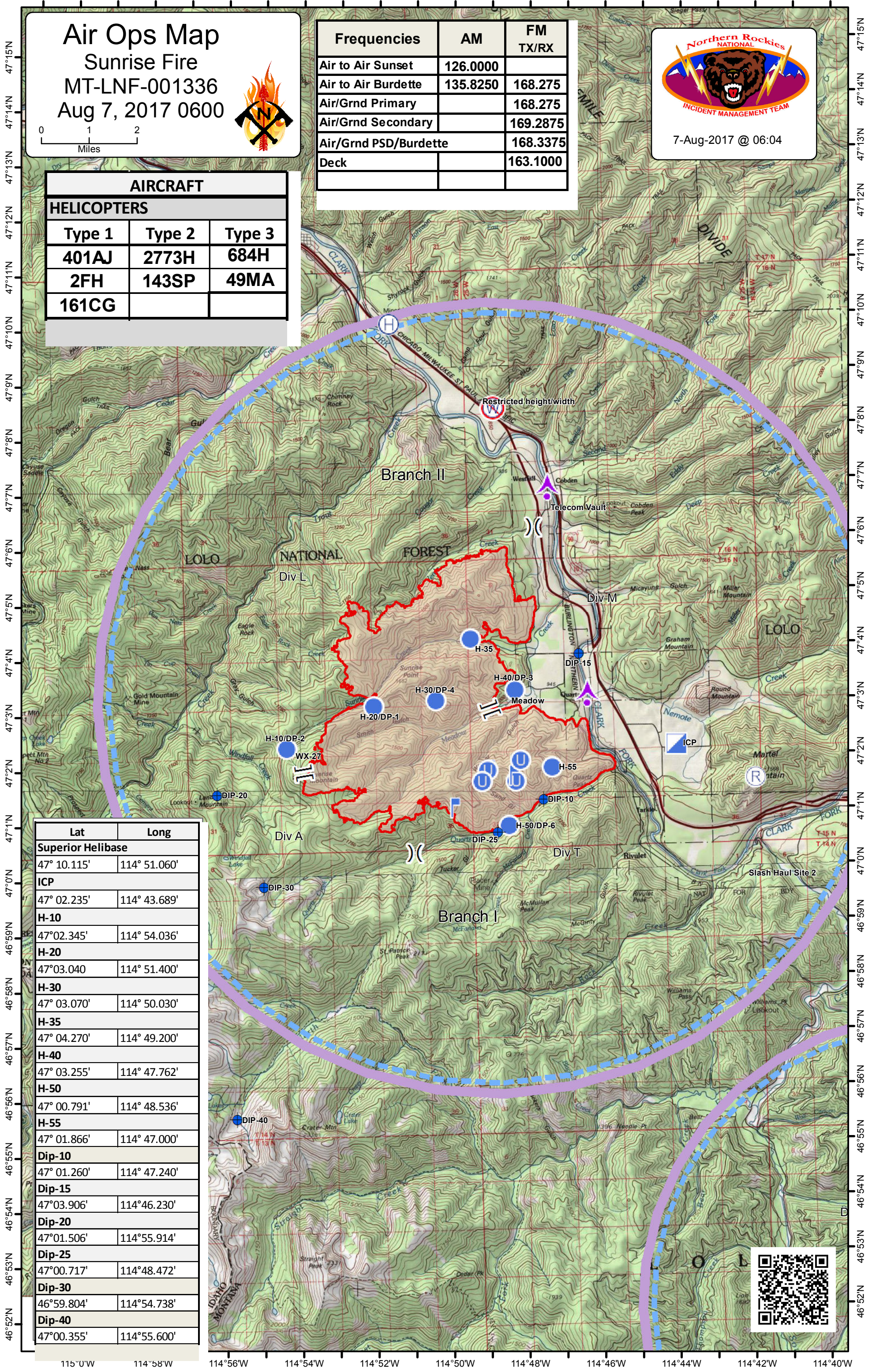
Aug 7, 2017 0600



Frequencies	AM	FM TX/RX
Air to Air Sunset	126.0000	
Air to Air Burdette	135.8250	168.275
Air/Grnd Primary		168.275
Air/Grnd Secondary		169.2875
Air/Grnd PSD/Burdette		168.3375
Deck		163.1000

7-Aug-2017 @ 06:04

AIRCRAFT		
HELICOPTERS		
Type 1	Type 2	Type 3
401AJ	2773H	684H
2FH	143SP	49MA
161CG		



Lat	Long
Superior Helibase	
47° 10.115'	114° 51.060'
ICP	
47° 02.235'	114° 43.689'
H-10	
47°02.345'	114° 54.036'
H-20	
47°03.040'	114° 51.400'
H-30	
47° 03.070'	114° 50.030'
H-35	
47° 04.270'	114° 49.200'
H-40	
47° 03.255'	114° 47.762'
H-50	
47° 00.791'	114° 48.536'
H-55	
47° 01.866'	114° 47.000'
Dip-10	
47° 01.260'	114° 47.240'
Dip-15	
47°03.906'	114°46.230'
Dip-20	
47°01.506'	114°55.914'
Dip-25	
47°00.717'	114°48.472'
Dip-30	
46°59.804'	114°54.738'
Dip-40	
47°00.355'	114°55.600'



115°0'W 114°58'W 114°56'W 114°54'W 114°52'W 114°50'W 114°48'W 114°46'W 114°44'W 114°42'W 114°40'W