

114°41'W 114°40'W 114°39'W 114°38'W 114°37'W 114°36'W 114°35'W

Air Ops Map

Burdette Fire
MT-LNF-001330
Aug 8, 2017 0600



0 1
Miles

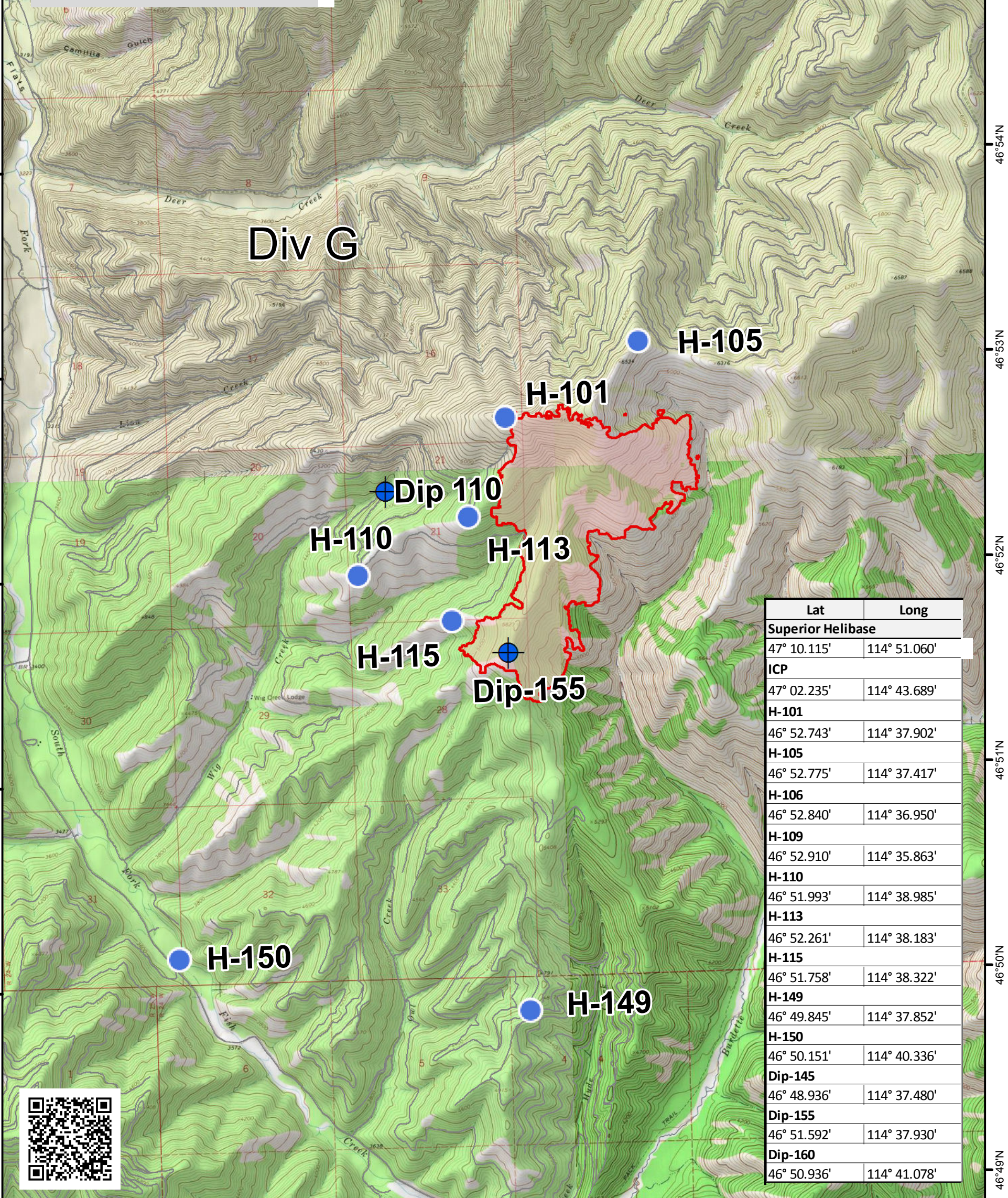
Frequencies	AM	FM TX/RX
Air/Air Sunrise	126.0000	
Air/Air Sunrise Secondary	135.8250	
Air/Air Rotor Wing	134.075	
Air/Grnd Primary		168.275
Air/Grnd Secondary		169.2875
Air/Ground PSD		168.3375
Deck		163.1000

7-Aug-2017 @ 20:57

AIRCRAFT		
HELICOPTERS		
Type 1	Type 2	Type 3
401AJ	2773H	684H
2FH	143SP	49MA
161CG		

Branch I

Div G



Lat	Long
Superior Helibase	
47° 10.115'	114° 51.060'
ICP	
47° 02.235'	114° 43.689'
H-101	
46° 52.743'	114° 37.902'
H-105	
46° 52.775'	114° 37.417'
H-106	
46° 52.840'	114° 36.950'
H-109	
46° 52.910'	114° 35.863'
H-110	
46° 51.993'	114° 38.985'
H-113	
46° 52.261'	114° 38.183'
H-115	
46° 51.758'	114° 38.322'
H-149	
46° 49.845'	114° 37.852'
H-150	
46° 50.151'	114° 40.336'
Dip-145	
46° 48.936'	114° 37.480'
Dip-155	
46° 51.592'	114° 37.930'
Dip-160	
46° 50.936'	114° 41.078'



46°56'N
46°55'N
46°54'N
46°53'N
46°52'N
46°51'N
46°50'N
46°49'N

46°56'N
46°55'N
46°54'N
46°53'N
46°52'N
46°51'N
46°50'N
46°49'N

114°41'W 114°40'W 114°39'W 114°38'W 114°37'W 114°36'W 114°35'W