

114°57'W 114°55'W 114°53'W 114°51'W 114°49'W 114°47'W 114°45'W 114°43'W 114°41'W 114°39'W 114°37'W 114°35'W

Air Ops Map

Sunrise Fire
MT-LNF-001336
Aug 8, 2017 0600

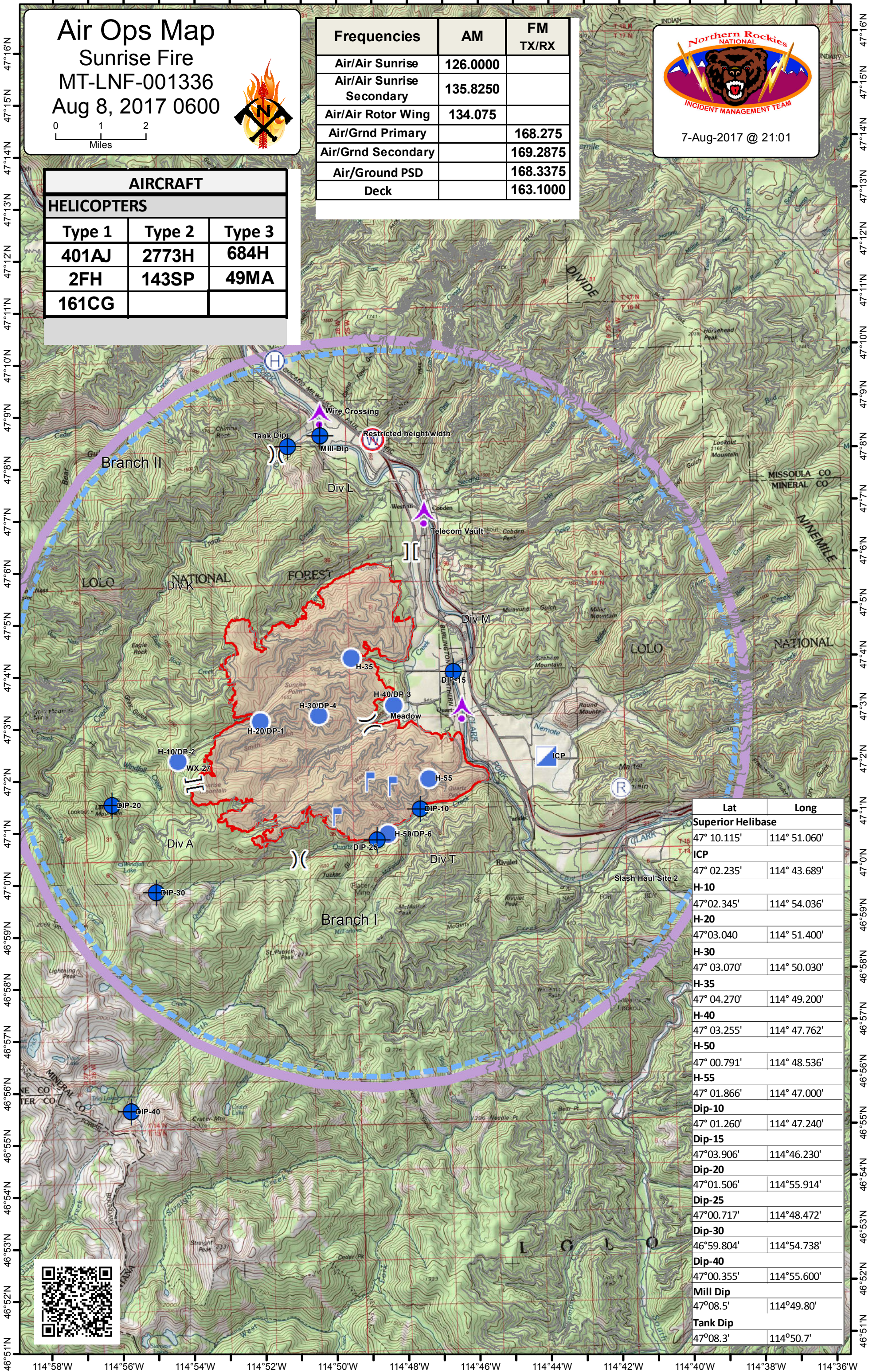


0 1 2
Miles

Frequencies	AM	FM TX/RX
Air/Air Sunrise	126.0000	
Air/Air Sunrise Secondary	135.8250	
Air/Air Rotor Wing	134.075	
Air/Grnd Primary		168.275
Air/Grnd Secondary		169.2875
Air/Ground PSD		168.3375
Deck		163.1000

7-Aug-2017 @ 21:01

AIRCRAFT		
HELICOPTERS		
Type 1	Type 2	Type 3
401AJ	2773H	684H
2FH	143SP	49MA
161CG		



Lat	Long
Superior Helibase	
47° 10.115'	114° 51.060'
ICP	
47° 02.235'	114° 43.689'
H-10	
47°02.345'	114° 54.036'
H-20	
47°03.040	114° 51.400'
H-30	
47° 03.070'	114° 50.030'
H-35	
47° 04.270'	114° 49.200'
H-40	
47° 03.255'	114° 47.762'
H-50	
47° 00.791'	114° 48.536'
H-55	
47° 01.866'	114° 47.000'
Dip-10	
47° 01.260'	114° 47.240'
Dip-15	
47°03.906'	114°46.230'
Dip-20	
47°01.506'	114°55.914'
Dip-25	
47°00.717'	114°48.472'
Dip-30	
46°59.804'	114°54.738'
Dip-40	
47°00.355'	114°55.600'
Mill Dip	
47°08.5'	114°49.80'
Tank Dip	
47°08.3'	114°50.7'

