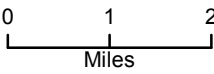


114°58'W 114°56'W 114°54'W 114°52'W 114°50'W 114°48'W 114°46'W 114°44'W 114°42'W 114°40'W 114°38'W 114°36'W

# Air Ops Map

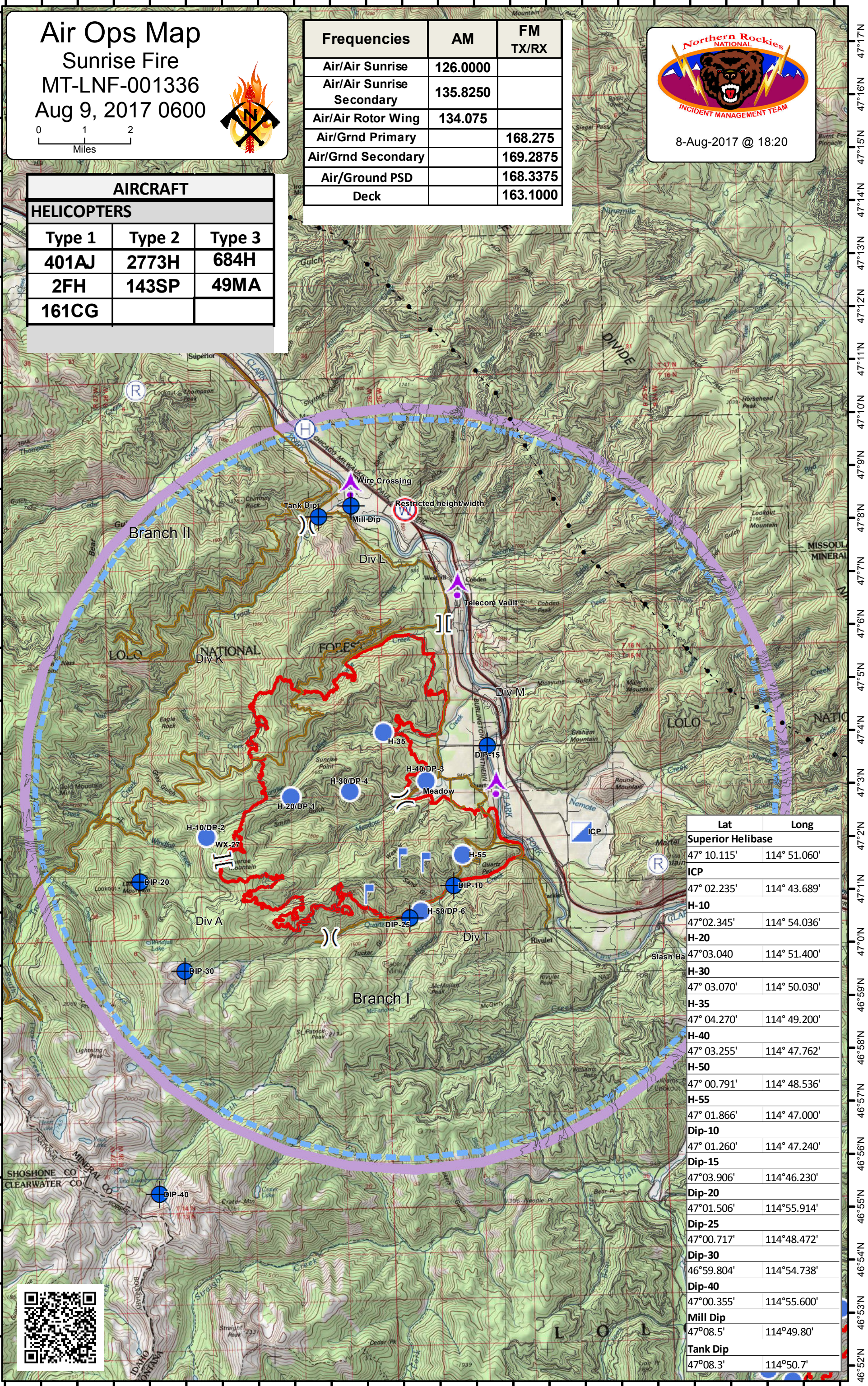
Sunrise Fire  
MT-LNF-001336  
Aug 9, 2017 0600



Frequencies	AM	FM TX/RX
Air/Air Sunrise	126.0000	
Air/Air Sunrise Secondary	135.8250	
Air/Air Rotor Wing	134.075	
Air/Grnd Primary		168.275
Air/Grnd Secondary		169.2875
Air/Ground PSD		168.3375
Deck		163.1000

8-Aug-2017 @ 18:20

AIRCRAFT		
HELICOPTERS		
Type 1	Type 2	Type 3
401AJ	2773H	684H
2FH	143SP	49MA
161CG		



Lat	Long
<b>Superior Helibase</b>	
47° 10.115'	114° 51.060'
<b>ICP</b>	
47° 02.235'	114° 43.689'
<b>H-10</b>	
47°02.345'	114° 54.036'
<b>H-20</b>	
47°03.040'	114° 51.400'
<b>H-30</b>	
47° 03.070'	114° 50.030'
<b>H-35</b>	
47° 04.270'	114° 49.200'
<b>H-40</b>	
47° 03.255'	114° 47.762'
<b>H-50</b>	
47° 00.791'	114° 48.536'
<b>H-55</b>	
47° 01.866'	114° 47.000'
<b>Dip-10</b>	
47° 01.260'	114° 47.240'
<b>Dip-15</b>	
47°03.906'	114°46.230'
<b>Dip-20</b>	
47°01.506'	114°55.914'
<b>Dip-25</b>	
47°00.717'	114°48.472'
<b>Dip-30</b>	
46°59.804'	114°54.738'
<b>Dip-40</b>	
47°00.355'	114°55.600'
<b>Mill Dip</b>	
47°08.5'	114°49.80'
<b>Tank Dip</b>	
47°08.3'	114°50.7'



114°59'W 114°57'W 114°55'W 114°53'W 114°51'W 114°49'W 114°47'W 114°45'W 114°43'W 114°41'W 114°39'W 114°37'W