

# Sunrise Fire - Div K

MT-LNF-001336

0600 BRIEFING Map

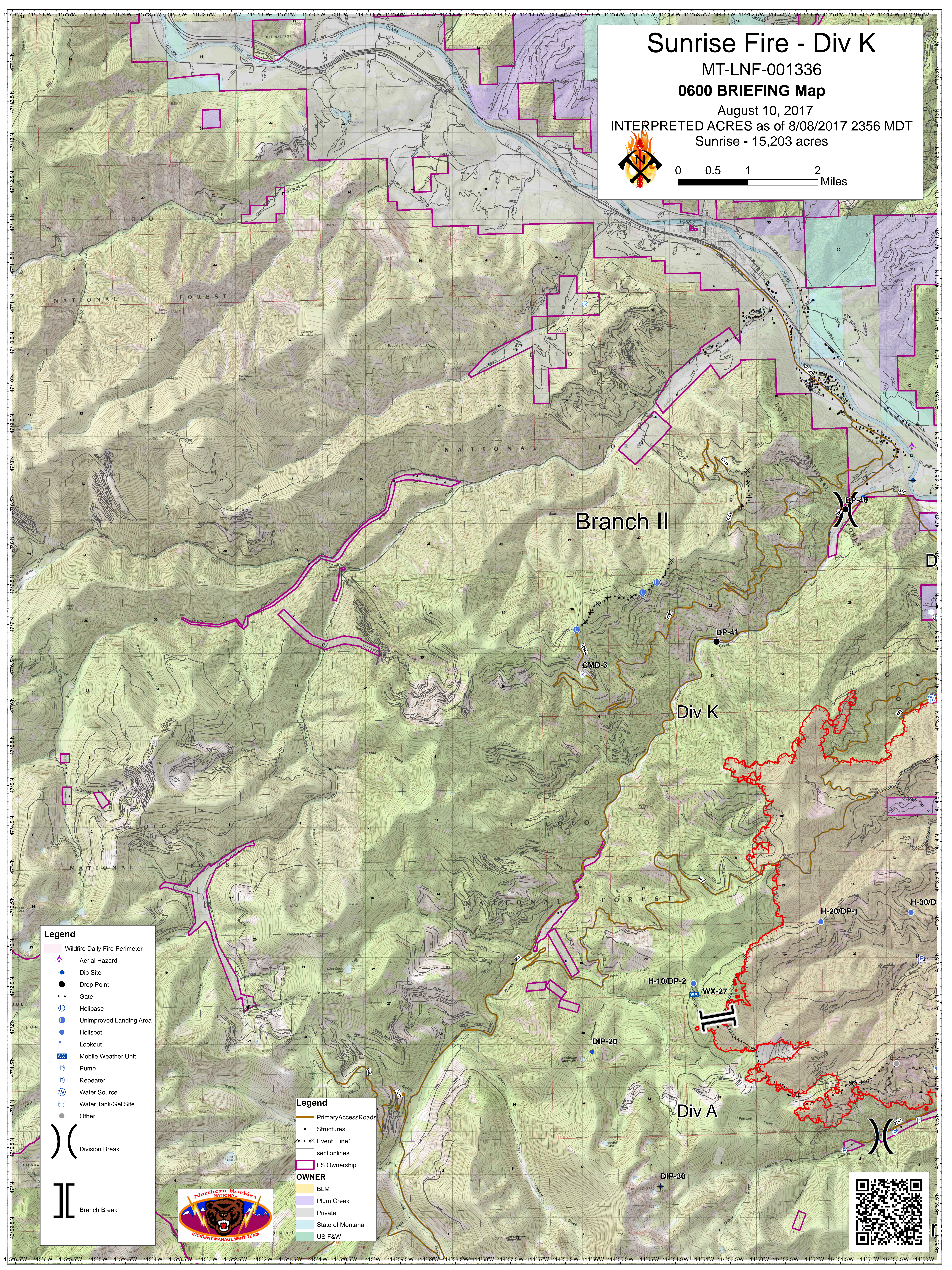
August 10, 2017

INTERPRETED ACRES as of 8/08/2017 2356 MDT

Sunrise - 15,203 acres



0 0.5 1 2 Miles



- Legend**
- Wildfire Daily Fire Perimeter
  - Aerial Hazard
  - Dip Site
  - Drop Point
  - Gate
  - Helibase
  - Unimproved Landing Area
  - Helispot
  - Lookout
  - Mobile Weather Unit
  - Pump
  - Repeater
  - Water Source
  - Water Tank/Gel Site
  - Other

)) ( Division Break

]] Branch Break

- Legend**
- Primary Access Roads
  - Structures
  - Event Line 1
  - sectionlines
  - FS Ownership
- OWNER**
- BLM
  - Plum Creek
  - Private
  - State of Montana
  - US F&W

