

Sunrise Fire

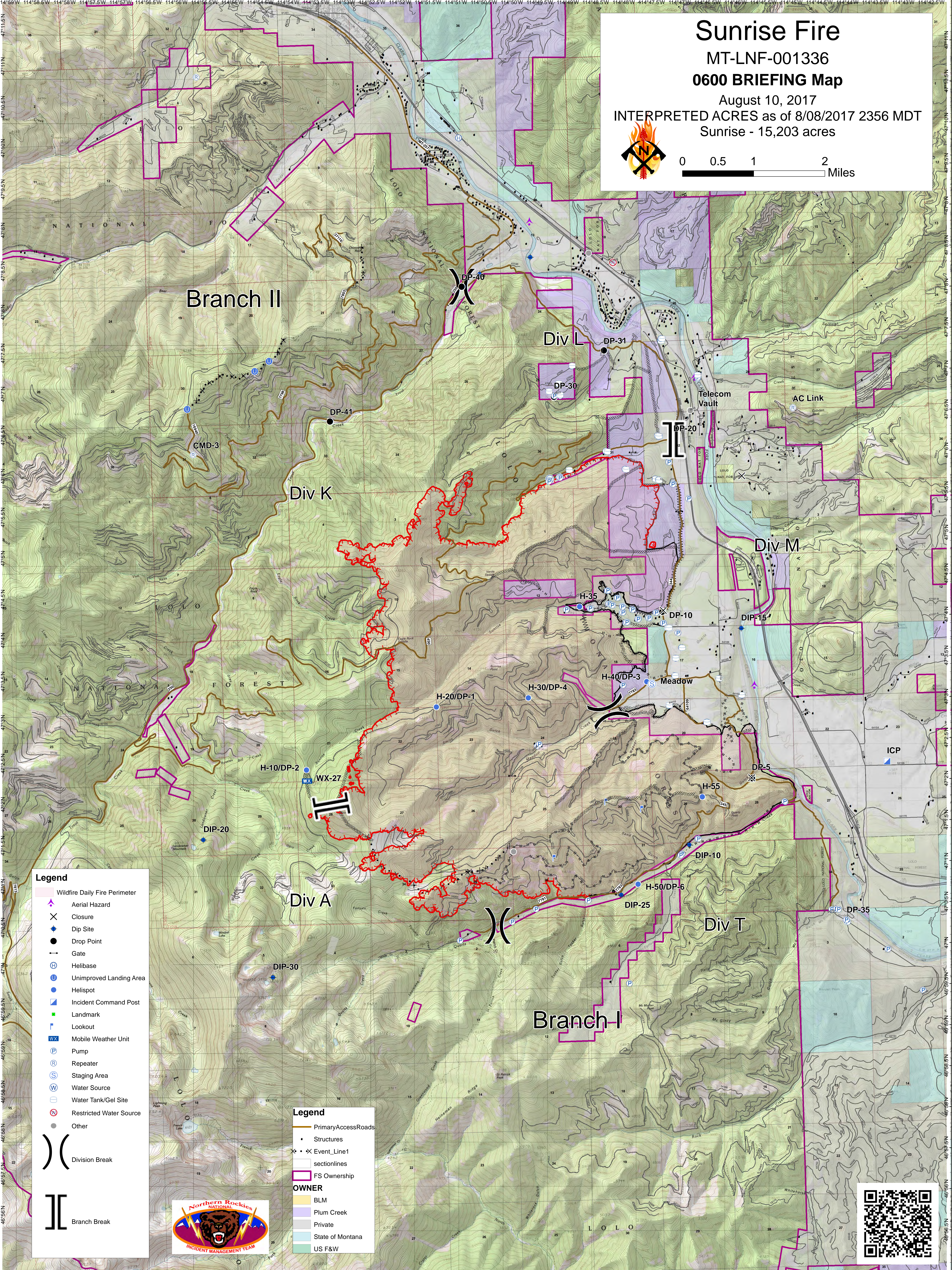
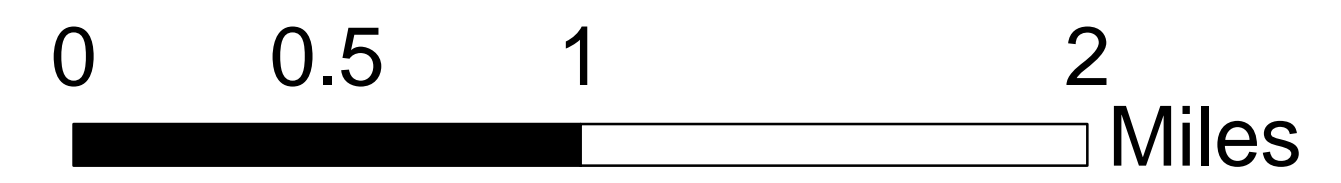
MT-LNF-001336

0600 BRIEFING Map

August 10, 2017

INTERPRETED ACRES as of 8/08/2017 2356 MDT

Sunrise - 15,203 acres



- Legend**
- Wildfire Daily Fire Perimeter
 - Aerial Hazard
 - Closure
 - Dip Site
 - Drop Point
 - Gate
 - Helibase
 - Unimproved Landing Area
 - Helispot
 - Incident Command Post
 - Landmark
 - Lookout
 - Mobile Weather Unit
 - Pump
 - Repeater
 - Staging Area
 - Water Source
 - Water Tank/Gel Site
 - Restricted Water Source
 - Other

)) (Division Break

[[Branch Break



- Legend**
- Primary Access Roads
 - Structures
 - Event_Line1
 - sectionlines
 - FS Ownership
- OWNER**
- BLM
 - Plum Creek
 - Private
 - State of Montana
 - US F&W

