

Sunrise Fire - Div K

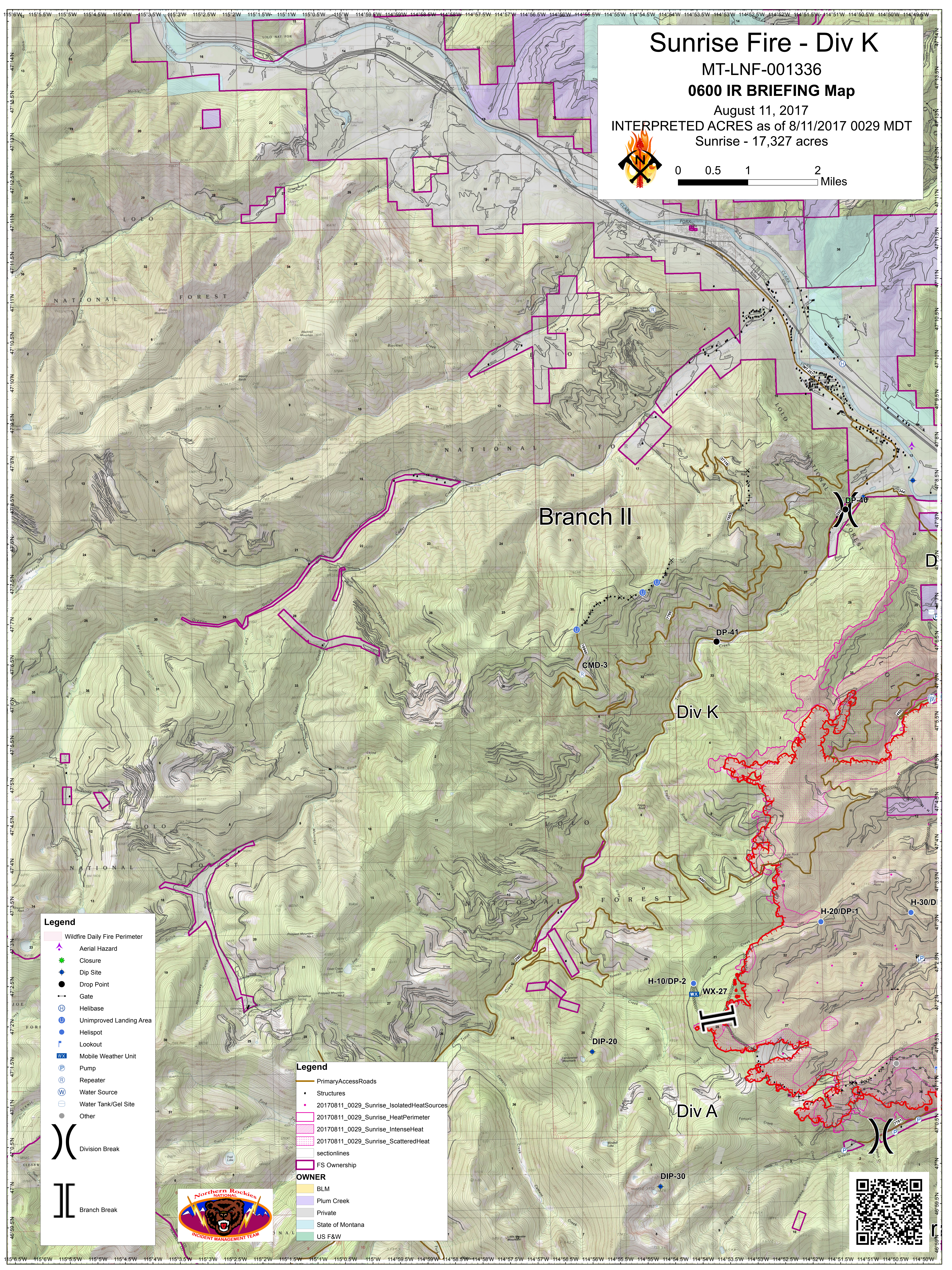
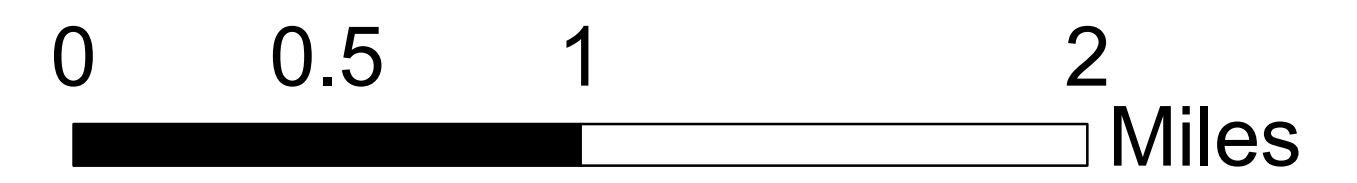
MT-LNF-001336

0600 IR BRIEFING Map

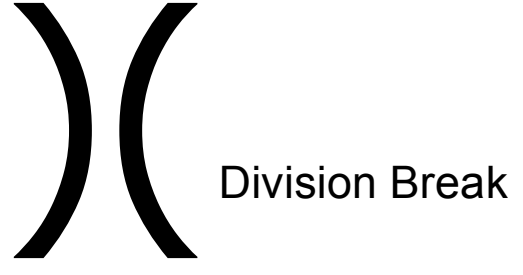
August 11, 2017

INTERPRETED ACRES as of 8/11/2017 0029 MDT

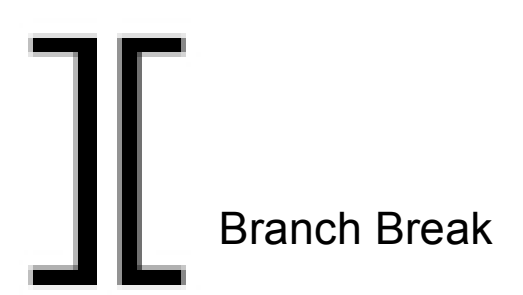
Sunrise - 17,327 acres



- Legend**
- Wildfire Daily Fire Perimeter
 - Aerial Hazard
 - Closure
 - Dip Site
 - Drop Point
 - Gate
 - Helibase
 - Unimproved Landing Area
 - Helispot
 - Lookout
 - Mobile Weather Unit
 - Pump
 - Repeater
 - Water Source
 - Water Tank/Gel Site
 - Other



Division Break



Branch Break



- Legend**
- Primary Access Roads
 - Structures
 - 20170811_0029_Sunrise_IsolatedHeatSources
 - 20170811_0029_Sunrise_HeatPerimeter
 - 20170811_0029_Sunrise_IntenseHeat
 - 20170811_0029_Sunrise_ScatteredHeat
 - sectionlines
 - FS Ownership
- OWNER**
- BLM
 - Plum Creek
 - Private
 - State of Montana
 - US F&W

