

Sunrise Fire

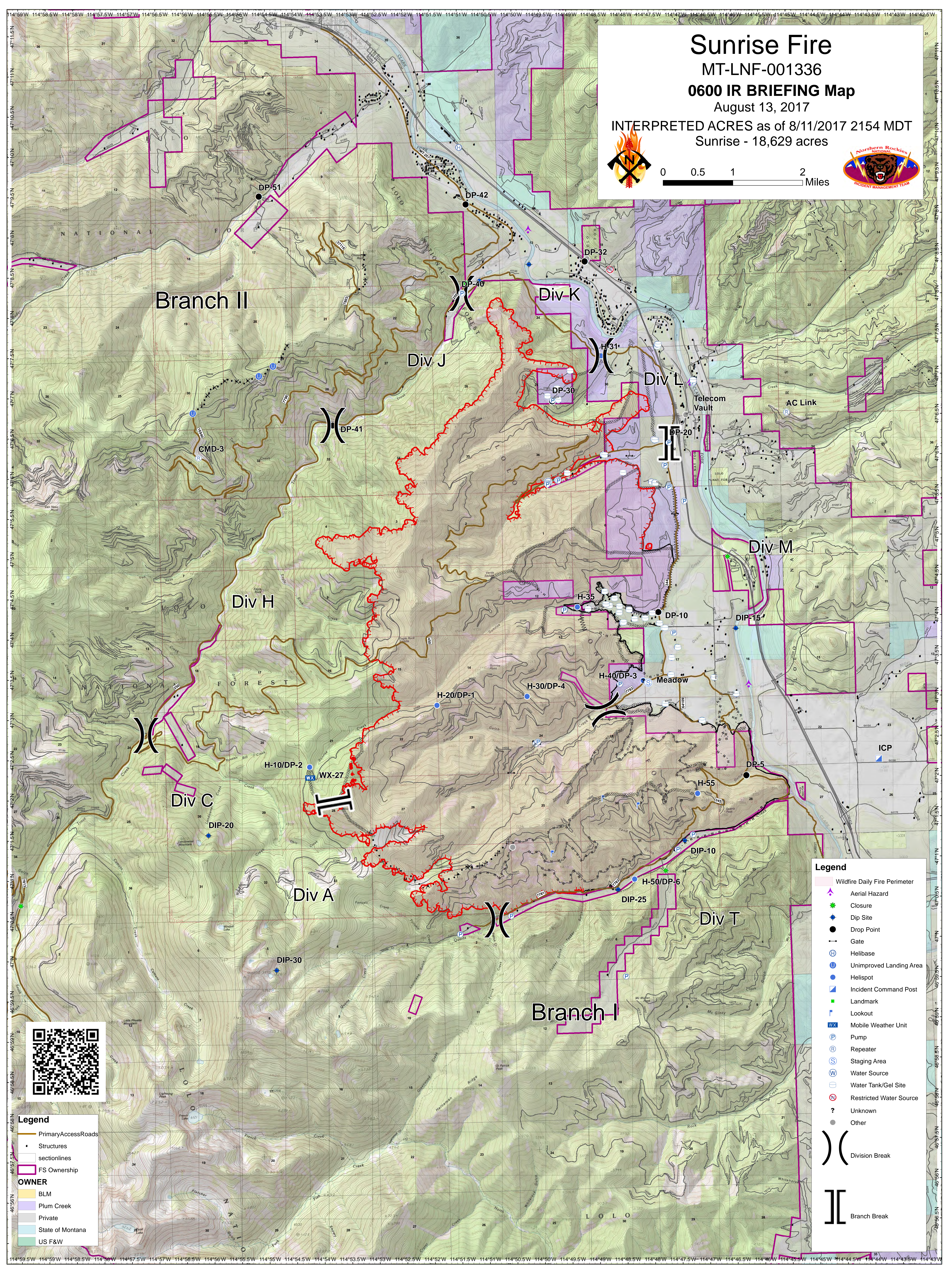
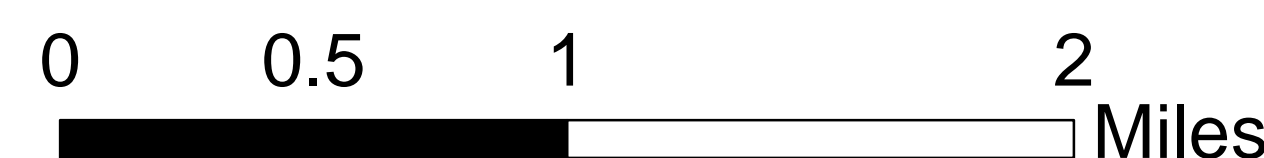
MT-LNF-001336

0600 IR BRIEFING Map

August 13, 2017

INTERPRETED ACRES as of 8/11/2017 2154 MDT

Sunrise - 18,629 acres



- Legend**
- Wildfire Daily Fire Perimeter
 - Aerial Hazard
 - Closure
 - Dip Site
 - Drop Point
 - Gate
 - Helibase
 - Unimproved Landing Area
 - Helispot
 - Incident Command Post
 - Landmark
 - Lookout
 - Mobile Weather Unit
 - Pump
 - Repeater
 - Staging Area
 - Water Source
 - Water Tank/Gel Site
 - Restricted Water Source
 - Unknown
 - Other
 - Division Break
 - Branch Break

- Legend**
- Primary Access Roads
 - Structures
 - sectionlines
 - FS Ownership
- OWNER**
- BLM
 - Plum Creek
 - Private
 - State of Montana
 - US F&W



114°59'W 114°58'W 114°57'W 114°56'W 114°55'W 114°54'W 114°53'W 114°52'W 114°51'W 114°50'W 114°49'W 114°48'W 114°47'W 114°46'W 114°45'W 114°44'W 114°43'W 114°42'W

47°15'N 47°14'N 47°13'N 47°12'N 47°11'N 47°10'N 47°9'N 47°8'N 47°7'N 47°6'N 47°5'N 47°4'N 47°3'N 47°2'N 47°1'N 47°0'N