

Air Ops Map

Sunrise Fire
MT-LNF-001336
Aug 13, 2017 0600

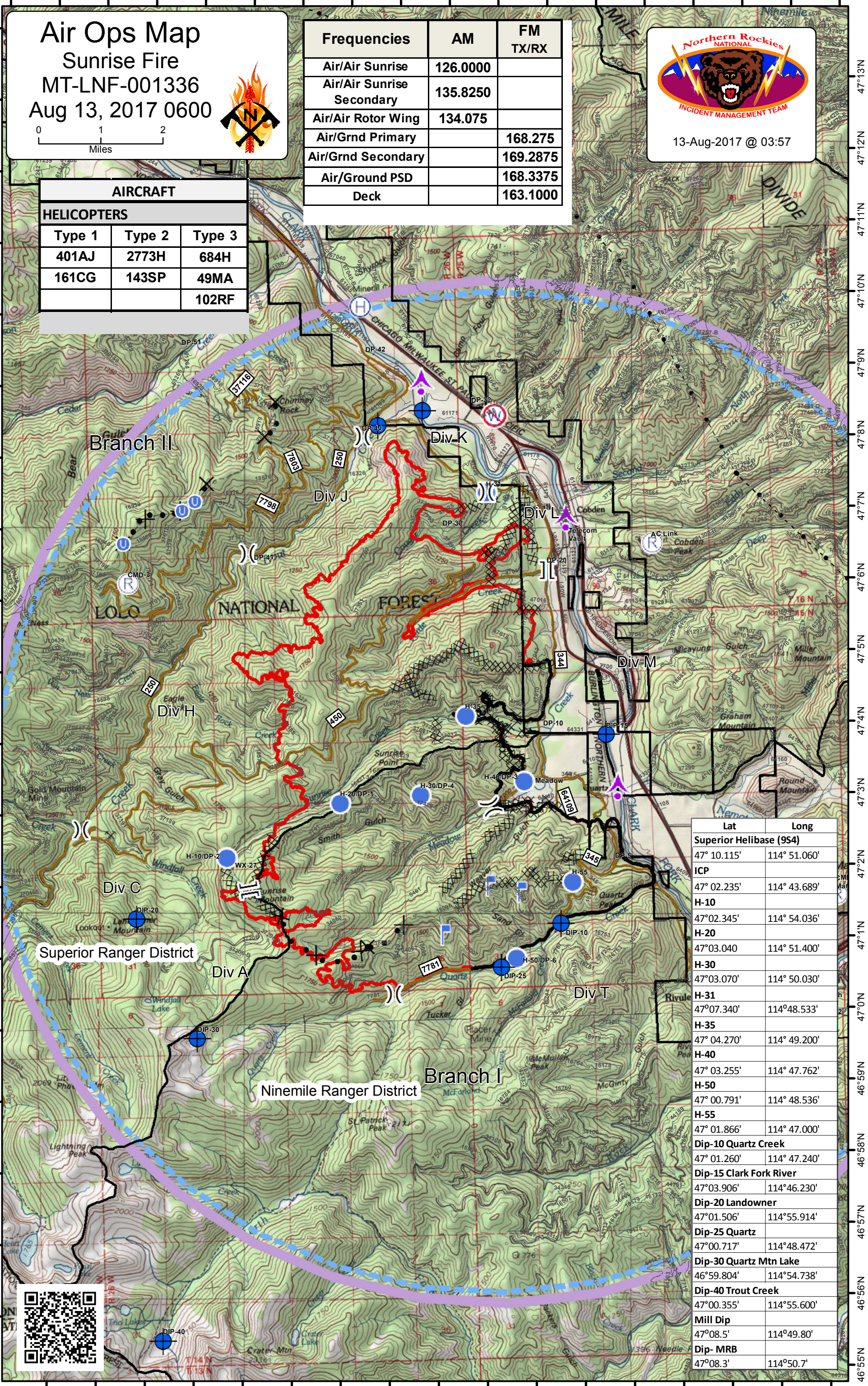


0 1 2
Miles

Frequencies	AM	FM TX/RX
Air/Air Sunrise	126.0000	
Air/Air Sunrise Secondary	135.8250	
Air/Air Rotor Wing	134.075	
Air/Grnd Primary		168.275
Air/Grnd Secondary		169.2875
Air/Ground PSD		168.3375
Deck		163.1000

13-Aug-2017 @ 03:57

AIRCRAFT		
HELICOPTERS		
Type 1	Type 2	Type 3
401AJ	2773H	684H
161CG	143SP	49MA
		102RF



Lat	Long
Superior Helibase (954)	
47° 10.115'	114° 51.060'
ICP	
47° 02.235'	114° 43.689'
H-10	
47°02.345'	114° 54.036'
H-20	
47°03.040'	114° 51.400'
H-30	
47°03.070'	114° 50.030'
H-31	
47°07.340'	114°48.533'
H-35	
47° 04.270'	114° 49.200'
H-40	
47° 03.255'	114° 47.762'
H-50	
47° 00.791'	114° 48.536'
H-55	
47° 01.866'	114° 47.000'
Dip-10 Quartz Creek	
47° 01.260'	114° 47.240'
Dip-15 Clark Fork River	
47°03.906'	114°46.230'
Dip-20 Landowner	
47°01.506'	114°55.914'
Dip-25 Quartz	
47°00.717'	114°48.472'
Dip-30 Quartz Mtn Lake	
46°59.804'	114°54.738'
Dip-40 Trout Creek	
47°00.355'	114°55.600'
Mill Dip	
47°08.5'	114°49.80'
Dip- MRB	
47°08.3'	114°50.7'

