

Sunrise Fire

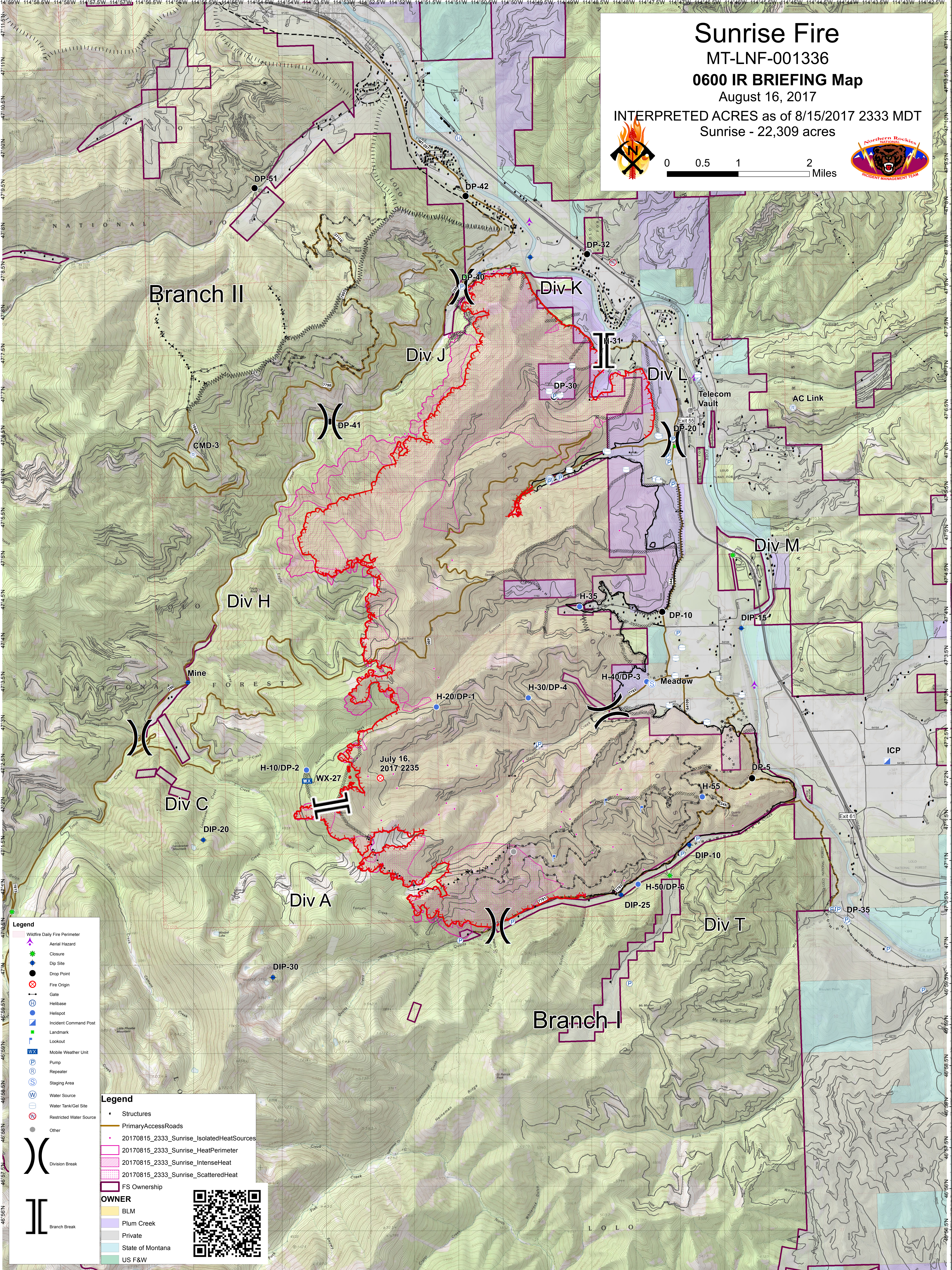
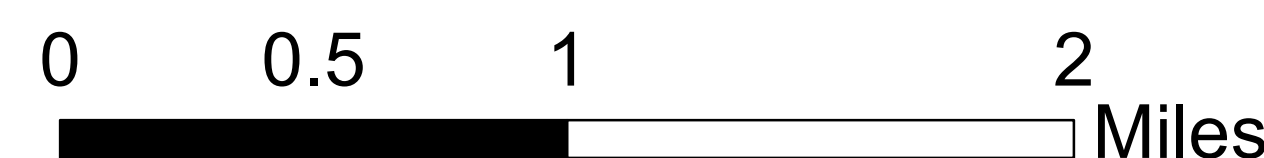
MT-LNF-001336

0600 IR BRIEFING Map

August 16, 2017

INTERPRETED ACRES as of 8/15/2017 2333 MDT

Sunrise - 22,309 acres



- Legend**
- Wildfire Daily Fire Perimeter
 - Aerial Hazard
 - Closure
 - Dip Site
 - Drop Point
 - Fire Origin
 - Gate
 - Helibase
 - Helispot
 - Incident Command Post
 - Landmark
 - Lookout
 - Mobile Weather Unit
 - Pump
 - Repeater
 - Staging Area
 - Water Source
 - Water Tank/Gel Site
 - Restricted Water Source
 - Other

- Legend**
- Structures
 - Primary Access Roads
 - 20170815_2333_Sunrise_Isolated Heat Sources
 - 20170815_2333_Sunrise_Heat Perimeter
 - 20170815_2333_Sunrise_Intense Heat
 - 20170815_2333_Sunrise_Scattered Heat
 - FS Ownership
- OWNER**
- BLM
 - Plum Creek
 - Private
 - State of Montana
 - US F&W



114°59.5'W 114°59'W 114°58.5'W 114°58'W 114°57.5'W 114°57'W 114°56.5'W 114°56'W 114°55.5'W 114°55'W 114°54.5'W 114°54'W 114°53.5'W 114°53'W 114°52.5'W 114°52'W 114°51.5'W 114°51'W 114°50.5'W 114°50'W 114°49.5'W 114°49'W 114°48.5'W 114°48'W 114°47.5'W 114°47'W 114°46.5'W 114°46'W 114°45.5'W 114°45'W 114°44.5'W 114°44'W 114°43.5'W 114°43'W 114°42.5'W 114°42'W