

Sunrise Fire

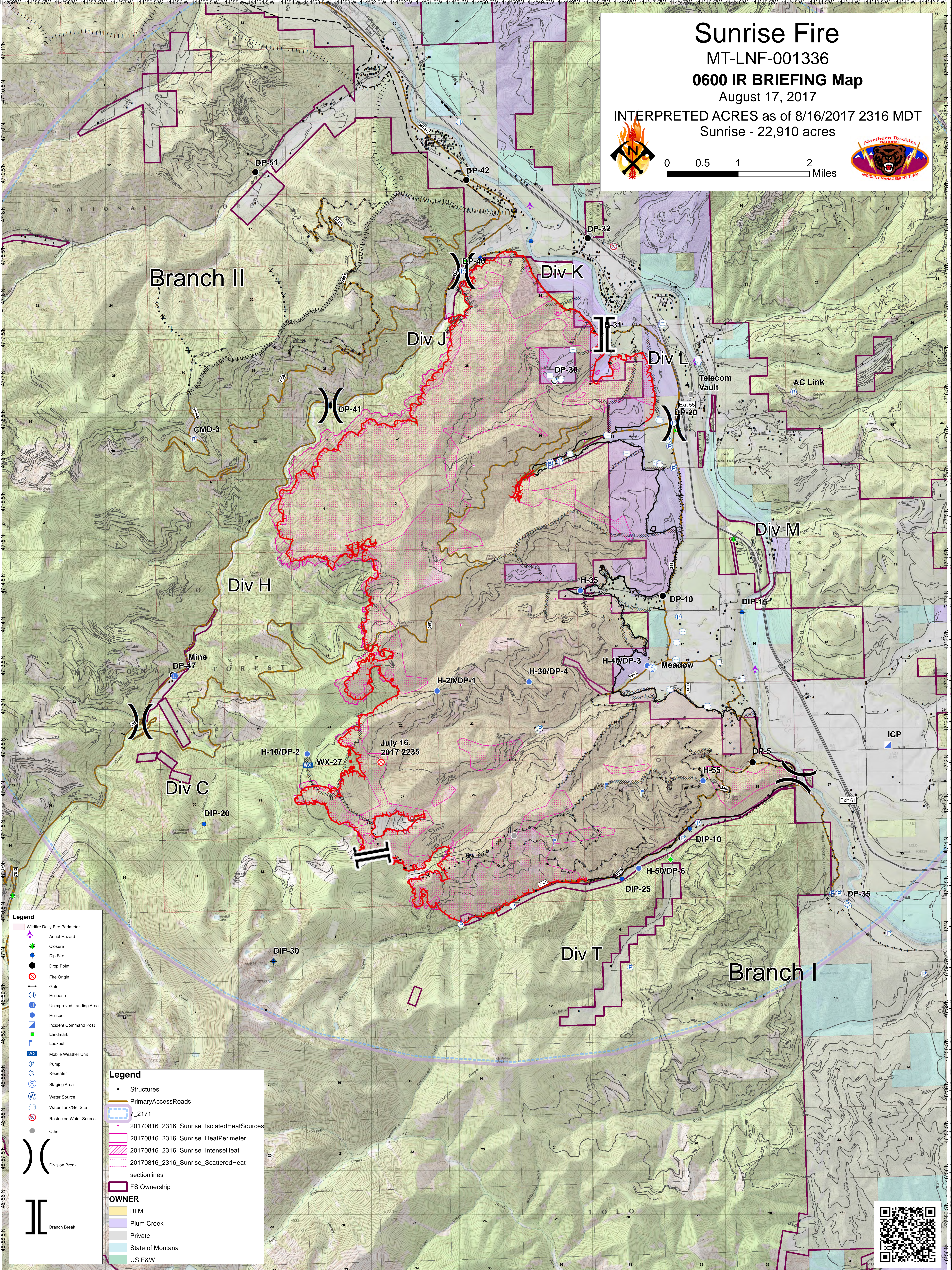
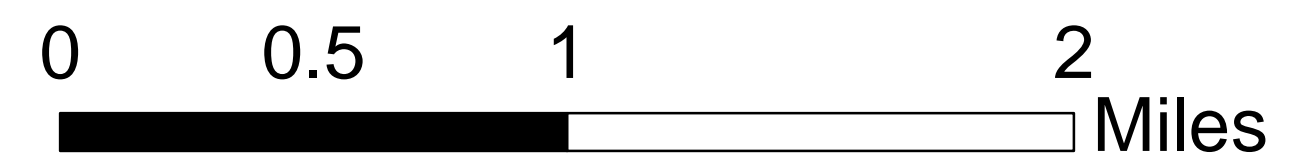
MT-LNF-001336

0600 IR BRIEFING Map

August 17, 2017

INTERPRETED ACRES as of 8/16/2017 2316 MDT

Sunrise - 22,910 acres



Legend

- Wildfire Daily Fire Perimeter
- Aerial Hazard
- Closure
- Dip Site
- Drop Point
- Fire Origin
- Gate
- Helibase
- Unimproved Landing Area
- Helispot
- Incident Command Post
- Landmark
- Lookout
- Mobile Weather Unit
- Pump
- Repeater
- Staging Area
- Water Source
- Water Tank/Gel Site
- Restricted Water Source
- Other

Legend

- Structures
- Primary Access Roads
- 7_2171
- 20170816_2316_Sunrise_IsolatedHeatSources
- 20170816_2316_Sunrise_HeatPerimeter
- 20170816_2316_Sunrise_IntenseHeat
- 20170816_2316_Sunrise_ScatteredHeat
- sectionlines
- FS Ownership

OWNER

- BLM
- Plum Creek
- Private
- State of Montana
- US F&W

)) Division Break

|| Branch Break

