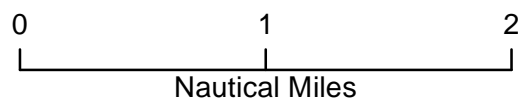
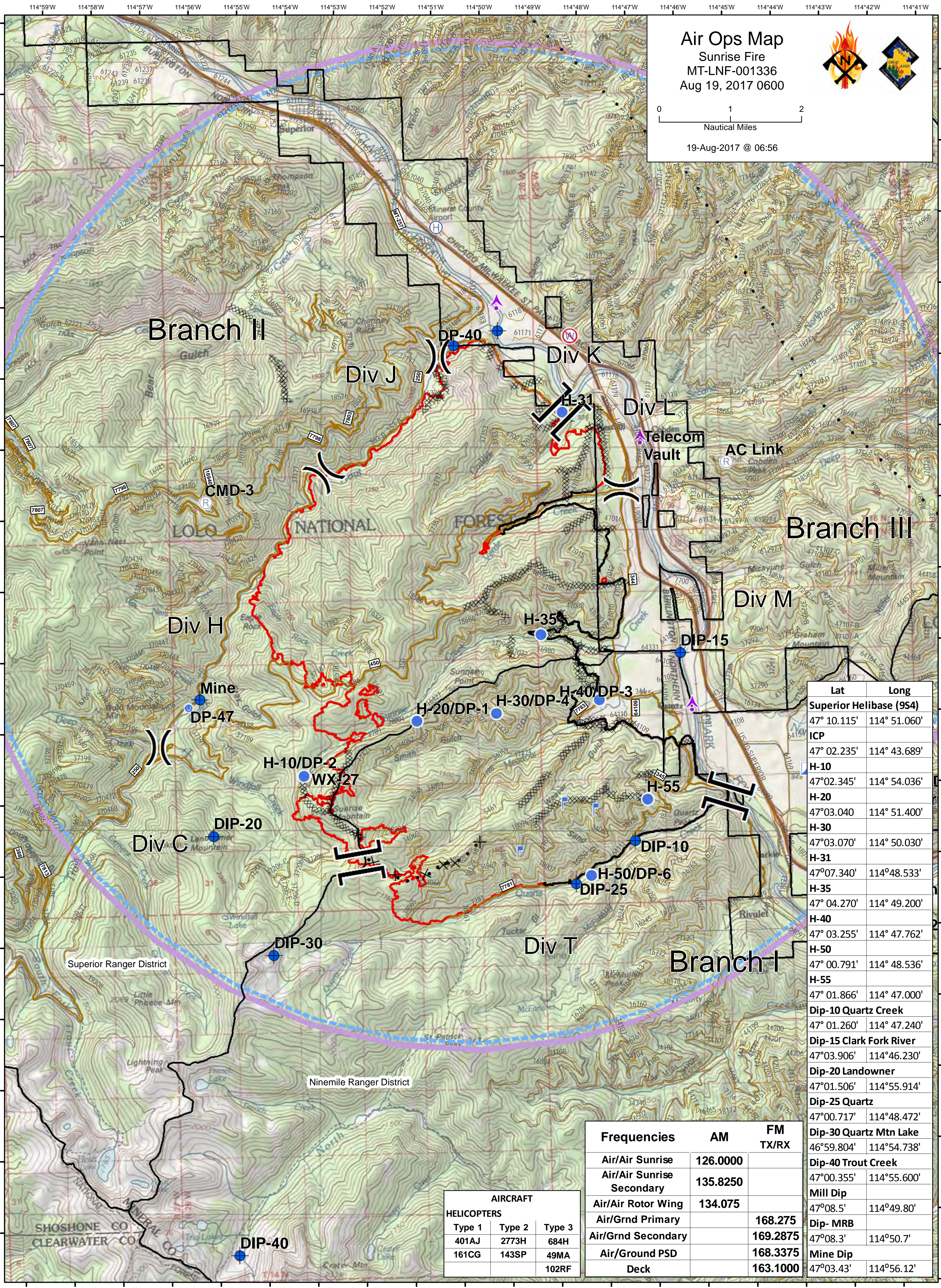


Air Ops Map

Sunrise Fire
MT-LNF-001336
Aug 19, 2017 0600



19-Aug-2017 @ 06:56



Lat	Long
Superior Helibase (9S4)	47° 10.115' 114° 51.060'
ICP	47° 02.235' 114° 43.689'
H-10	47°02.345' 114° 54.036'
H-20	47°03.040' 114° 51.400'
H-30	47°03.070' 114° 50.030'
H-31	47°07.340' 114°48.533'
H-35	47° 04.270' 114° 49.200'
H-40	47° 03.255' 114° 47.762'
H-50	47° 00.791' 114° 48.536'
H-55	47° 01.866' 114° 47.000'
Dip-10 Quartz Creek	47° 01.260' 114° 47.240'
Dip-15 Clark Fork River	47°03.906' 114°46.230'
Dip-20 Landowner	47°01.506' 114°55.914'
Dip-25 Quartz	47°00.717' 114°48.472'
Dip-30 Quartz Mtn Lake	46°59.804' 114°54.738'
Dip-40 Trout Creek	47°00.355' 114°55.600'
Mill Dip	47°08.5' 114°49.80'
Dip- MRB	47°08.3' 114°50.7'
Mine Dip	47°03.43' 114°56.12'

Frequencies	AM	FM TX/RX
Air/Air Sunrise	126.0000	
Air/Air Sunrise Secondary	135.8250	
Air/Air Rotor Wing	134.075	
Air/Grnd Primary		168.275
Air/Grnd Secondary		169.2875
Air/Ground PSD		168.3375
Deck		163.1000

AIRCRAFT		
HELICOPTERS		
Type 1	Type 2	Type 3
401AJ	2773H	684H
161CG	143SP	49MA
		102RF