

# Sunrise Fire

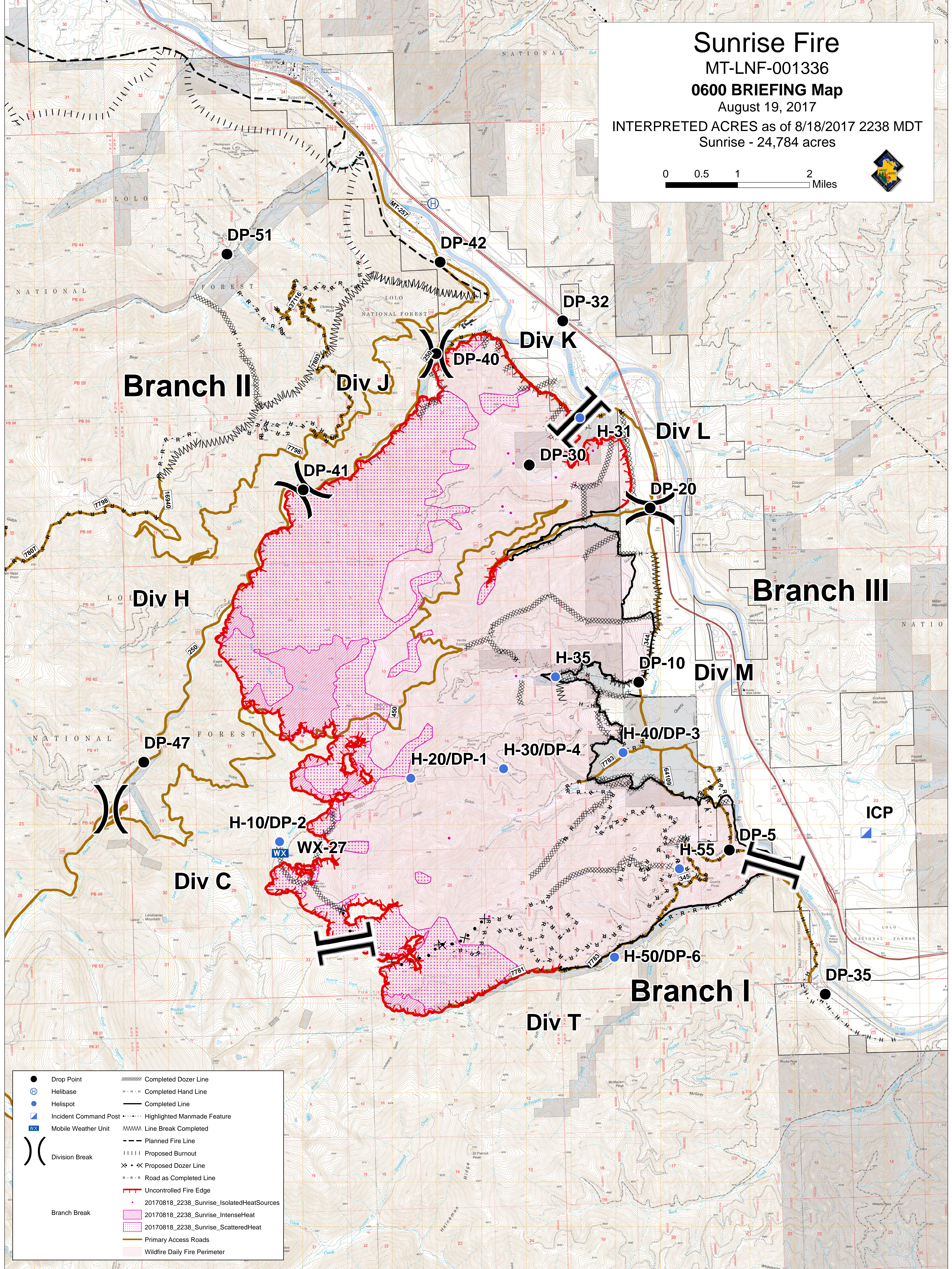
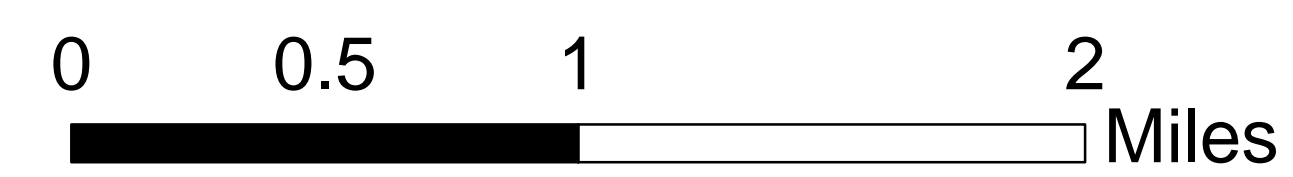
MT-LNF-001336

0600 BRIEFING Map

August 19, 2017

INTERPRETED ACRES as of 8/18/2017 2238 MDT

Sunrise - 24,784 acres



● Drop Point	----- Completed Dozer Line
⊕ Helibase	- - - - - Completed Hand Line
● Helispot	— Completed Line
▣ Incident Command Post	..... Highlighted Manmade Feature
☒ Mobile Weather Unit	MMMM Line Break Completed
) ( Division Break	- - - - - Planned Fire Line
Branch Break	Proposed Burnout
	× × Proposed Dozer Line
	R - R - R Road as Completed Line
	— Uncontrolled Fire Edge
	20170818_2238_Sunrise_IsolatedHeatSources
	20170818_2238_Sunrise_IntenseHeat
	20170818_2238_Sunrise_ScatteredHeat
	Primary Access Roads
	Wildfire Daily Fire Perimeter