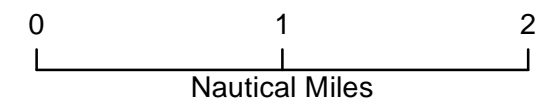
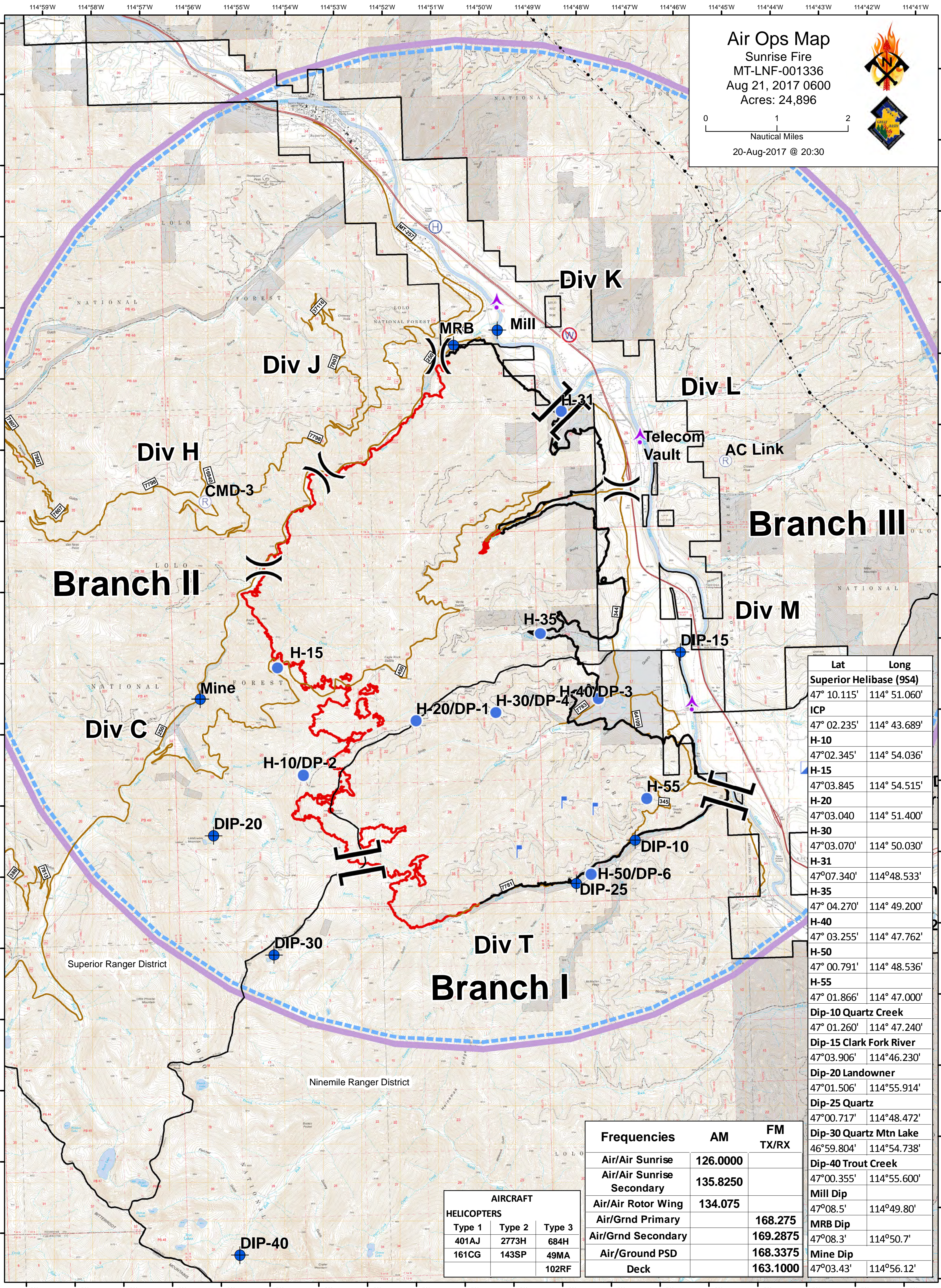


Air Ops Map

Sunrise Fire
 MT-LNF-001336
 Aug 21, 2017 0600
 Acres: 24,896



20-Aug-2017 @ 20:30



Lat	Long
47° 10.115'	114° 51.060'
47° 02.235'	114° 43.689'
47°02.345'	114° 54.036'
47°03.845'	114° 54.515'
47°03.040'	114° 51.400'
47°03.070'	114° 50.030'
47°07.340'	114°48.533'
47° 04.270'	114° 49.200'
47° 03.255'	114° 47.762'
47° 00.791'	114° 48.536'
47° 01.866'	114° 47.000'
47° 01.260'	114° 47.240'
47°03.906'	114°46.230'
47°01.506'	114°55.914'
47°00.717'	114°48.472'
46°59.804'	114°54.738'
47°00.355'	114°55.600'
47°08.5'	114°49.80'
47°08.3'	114°50.7'
47°03.43'	114°56.12'

Frequencies	AM	FM TX/RX
Air/Air Sunrise	126.0000	
Air/Air Sunrise Secondary	135.8250	
Air/Air Rotor Wing	134.075	
Air/Grnd Primary		168.275
Air/Grnd Secondary		169.2875
Air/Ground PSD Deck		168.3375 163.1000

AIRCRAFT		
HELICOPTERS		
Type 1	Type 2	Type 3
401AJ	2773H	684H
161CG	143SP	49MA
		102RF