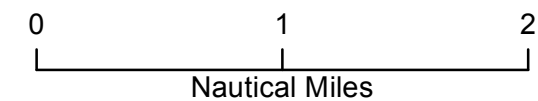
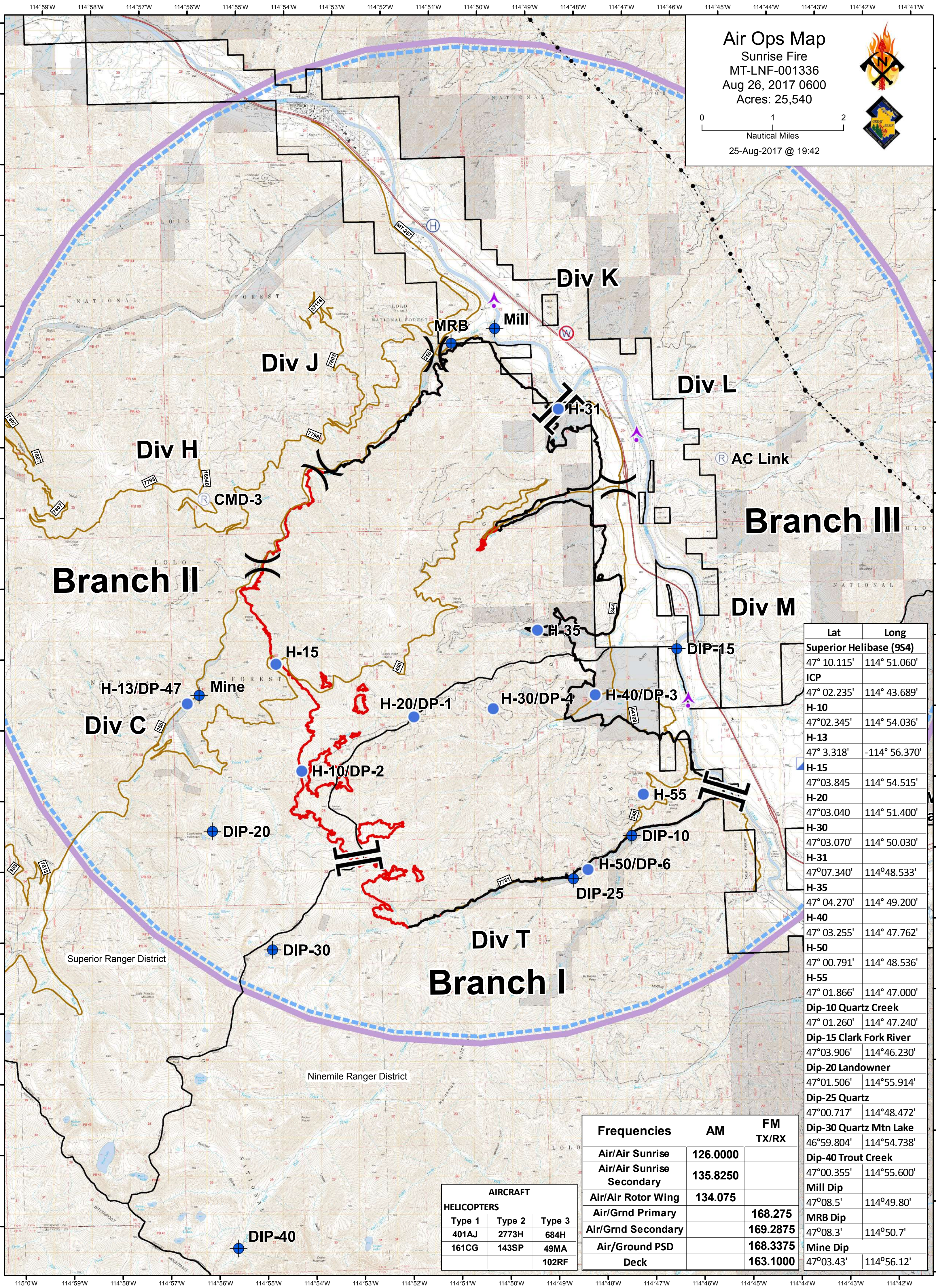


Air Ops Map

Sunrise Fire
 MT-LNF-001336
 Aug 26, 2017 0600
 Acres: 25,540



25-Aug-2017 @ 19:42



Lat	Long
47° 10.115'	114° 51.060'
47° 02.235'	114° 43.689'
47° 02.345'	114° 54.036'
47° 3.318'	-114° 56.370'
47° 03.845'	114° 54.515'
47° 03.040'	114° 51.400'
47° 03.070'	114° 50.030'
47° 07.340'	114° 48.533'
47° 04.270'	114° 49.200'
47° 03.255'	114° 47.762'
47° 00.791'	114° 48.536'
47° 01.866'	114° 47.000'
47° 01.260'	114° 47.240'
47° 03.906'	114° 46.230'
47° 01.506'	114° 55.914'
47° 00.717'	114° 48.472'
46° 59.804'	114° 54.738'
47° 00.355'	114° 55.600'
47° 08.5'	114° 49.80'
47° 08.3'	114° 50.7'
47° 03.43'	114° 56.12'

Frequencies	AM	FM TX/RX
Air/Air Sunrise	126.0000	
Air/Air Sunrise Secondary	135.8250	
Air/Air Rotor Wing	134.075	
Air/Grnd Primary		168.275
Air/Grnd Secondary		169.2875
Air/Ground PSD Deck		168.3375 163.1000

AIRCRAFT		
HELICOPTERS		
Type 1	Type 2	Type 3
401AJ	2773H	684H
161CG	143SP	49MA
		102RF

Superior Ranger District

Ninemile Ranger District

Branch II

Branch III

Branch I

Div C

Div H

Div J

Div K

Div L

Div M

Div T

CMD-3

MRB

Mill

AC Link

Mine

H-13/DP-47

H-15

H-20/DP-1

H-30/DP-4

H-40/DP-3

H-10/DP-2

H-55

DIP-20

DIP-10

H-50/DP-6

DIP-25

DIP-30

DIP-40

H-31

H-35

DIP-15