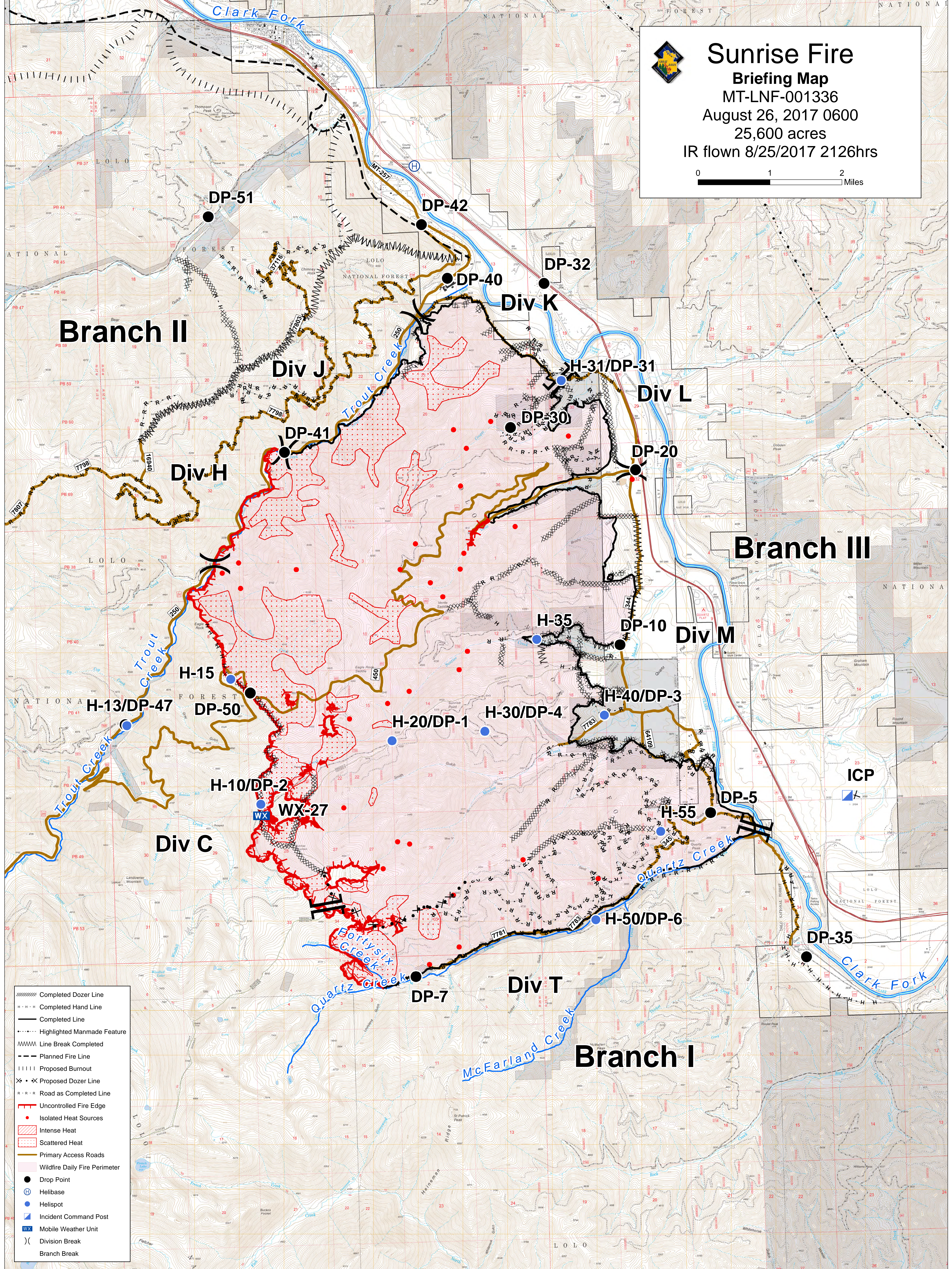


Sunrise Fire
Briefing Map
 MT-LNF-001336
 August 26, 2017 0600
 25,600 acres
 IR flown 8/25/2017 2126hrs



- Completed Dozer Line
- - - - - Completed Hand Line
- Completed Line
- · · · · Highlighted Manmade Feature
- MMMM Line Break Completed
- - - - - Planned Fire Line
- ||||| Proposed Burnout
- × · × Proposed Dozer Line
- R - R - R Road as Completed Line
- Uncontrolled Fire Edge
- Isolated Heat Sources
- Intense Heat
- Scattered Heat
- Primary Access Roads
- Wildfire Daily Fire Perimeter
- Drop Point
- ⊕ Helibase
- Helispot
- ⊠ Incident Command Post
- WX Mobile Weather Unit
-) Division Break
- Branch Break