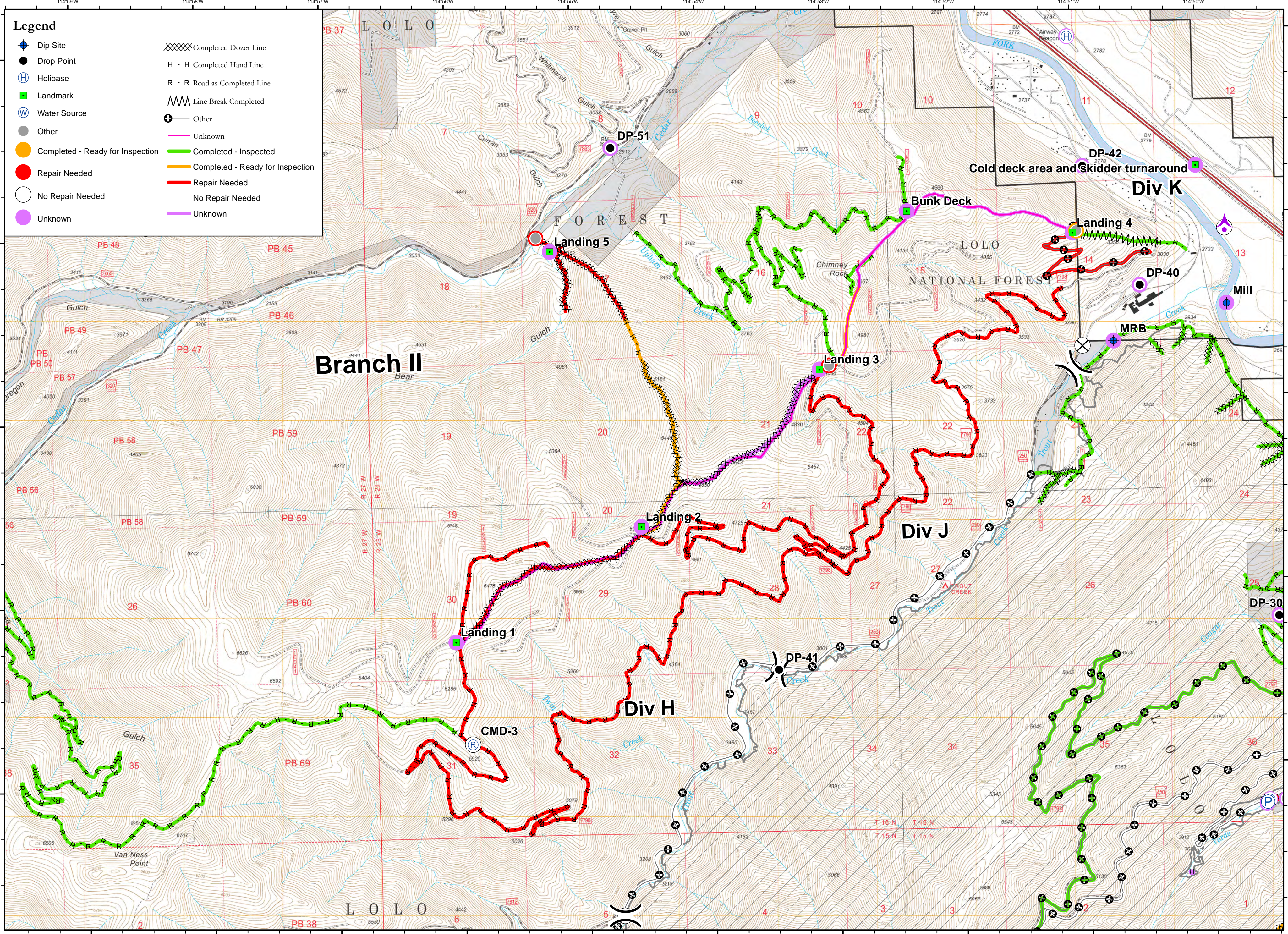


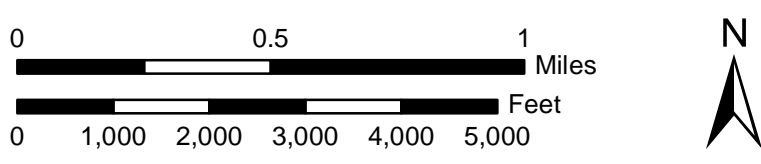
Suppression Repair Field Map - 8/31/2017 - 0802 hrs

**Legend**

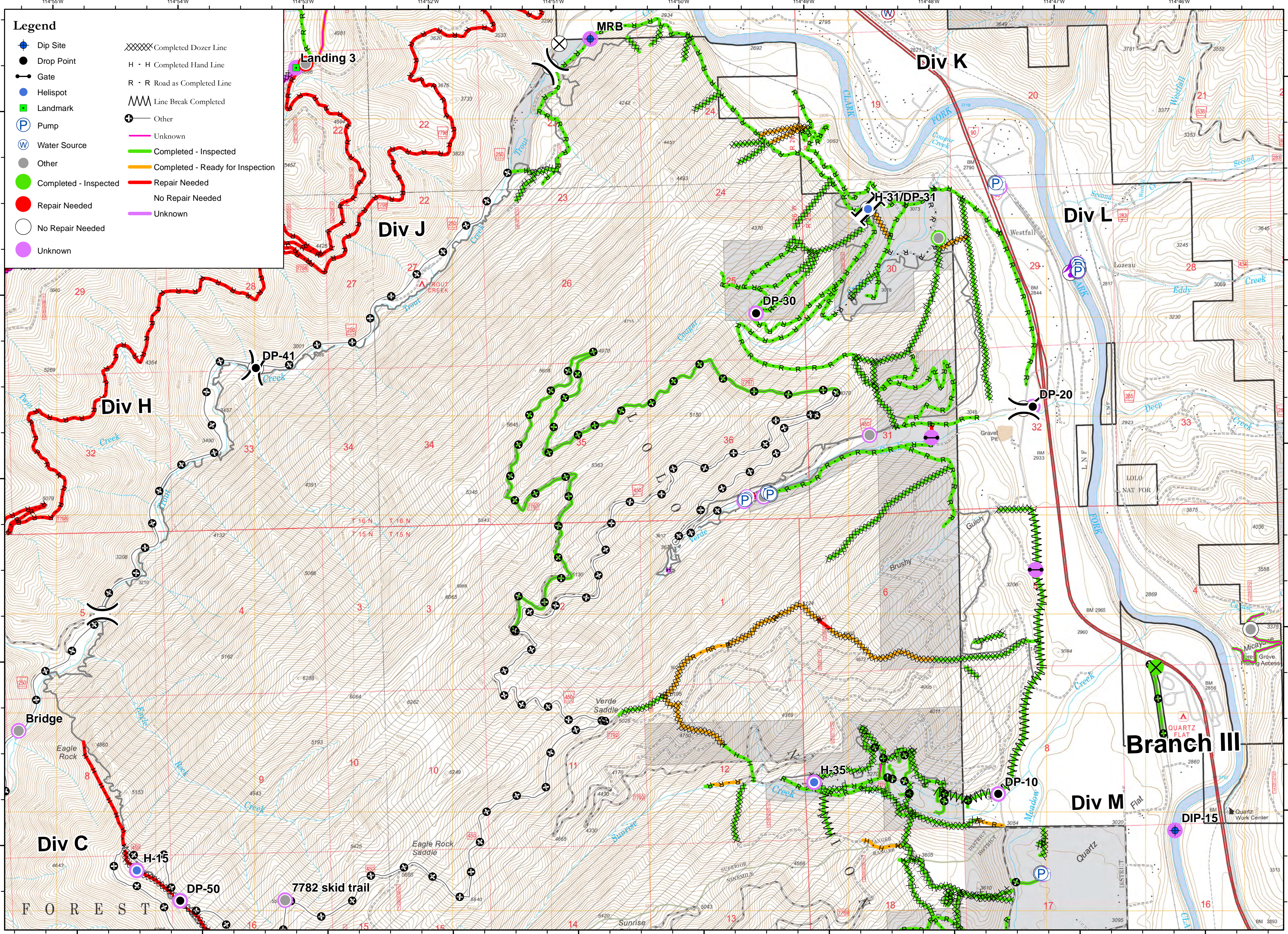
Dip Site	Completed Dozer Line
Drop Point	H - H Completed Hand Line
Helibase	R - R Road as Completed Line
Landmark	Line Break Completed
Water Source	Other
Other	Unknown
Completed - Ready for Inspection	Completed - Inspected
Repair Needed	Completed - Ready for Inspection
No Repair Needed	Repair Needed
Unknown	No Repair Needed
	Unknown



**Sunrise Fire MT-LNF-001336  
Suppression Repair Map - Tile 1**

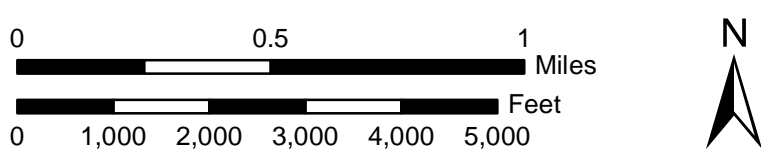






**Legend**

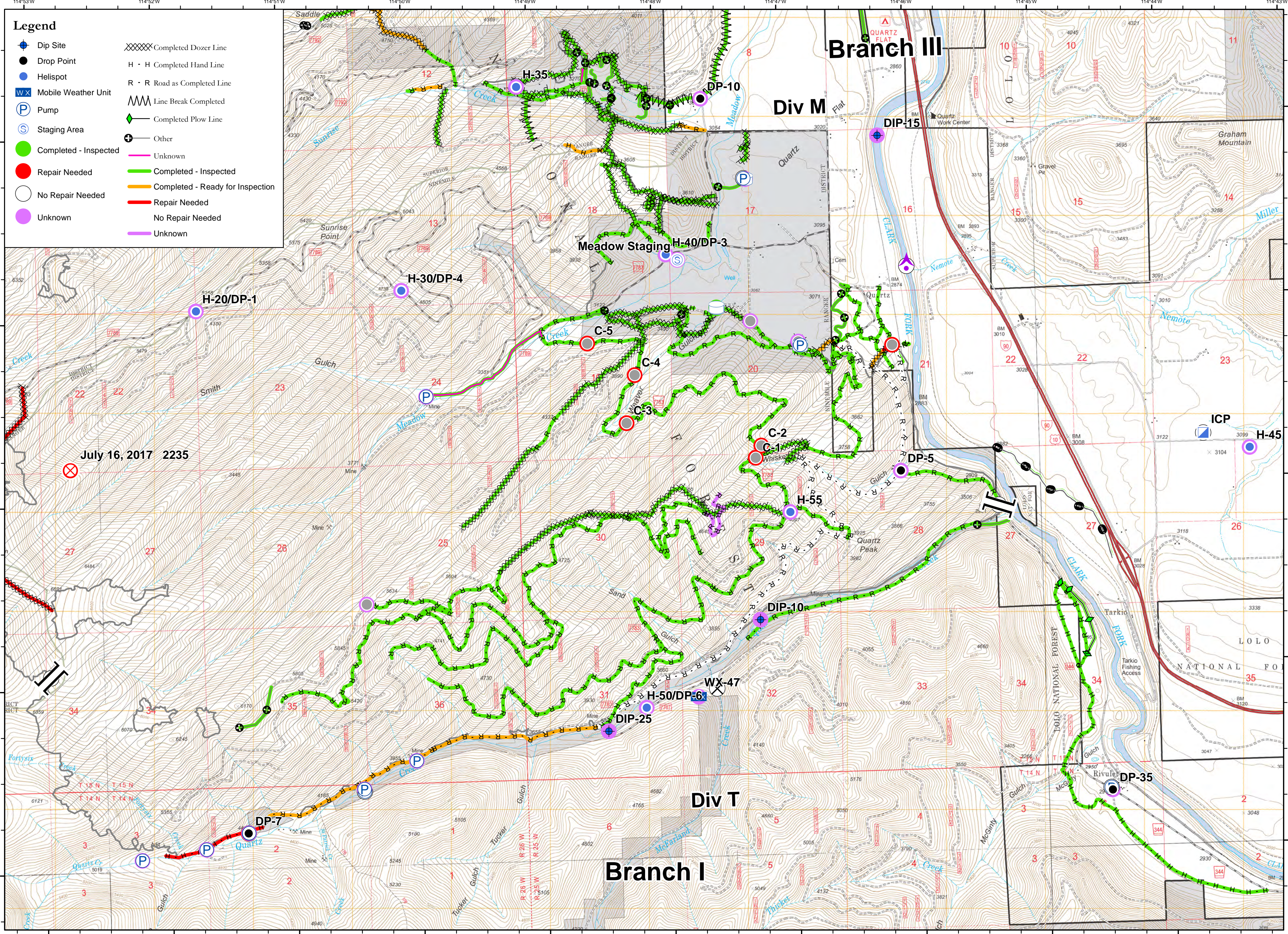
- Dip Site
- Drop Point
- Gate
- Helispot
- Landmark
- Ⓟ Pump
- Ⓜ Water Source
- Other
- Completed - Inspected
- Repair Needed
- No Repair Needed
- Unknown
- XXXXX Completed Dozer Line
- H · H Completed Hand Line
- R · R Road as Completed Line
- MMM Line Break Completed
- ⊕ Other
- Unknown
- Completed - Inspected
- Completed - Ready for Inspection
- Repair Needed
- No Repair Needed
- Unknown



**Sunrise Fire MT-LNF-001336  
Suppression Repair Map - Tile 2**



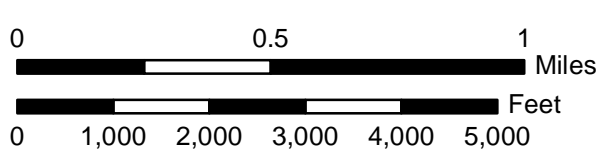




**Legend**

Dip Site	Completed Dozer Line
Drop Point	H - H Completed Hand Line
Helispot	R - R Road as Completed Line
Mobile Weather Unit	Line Break Completed
Pump	Completed Plow Line
Staging Area	Other
Completed - Inspected	Unknown
Repair Needed	Completed - Inspected
No Repair Needed	Completed - Ready for Inspection
Unknown	Repair Needed
	No Repair Needed
	Unknown

July 16, 2017 2235



**Sunrise Fire MT-LNF-001336**  
**Suppression Repair Map - Tile 3**

