

**Sunrise
IAP Map**
 MT-LNF-001336
 9/6/2017
 Day Shift
 Approx. 26,190 acres
 as of 9/6/2017 @ 1630 hrs.
 Page 1 of 8

Legend

Repair Status - Point

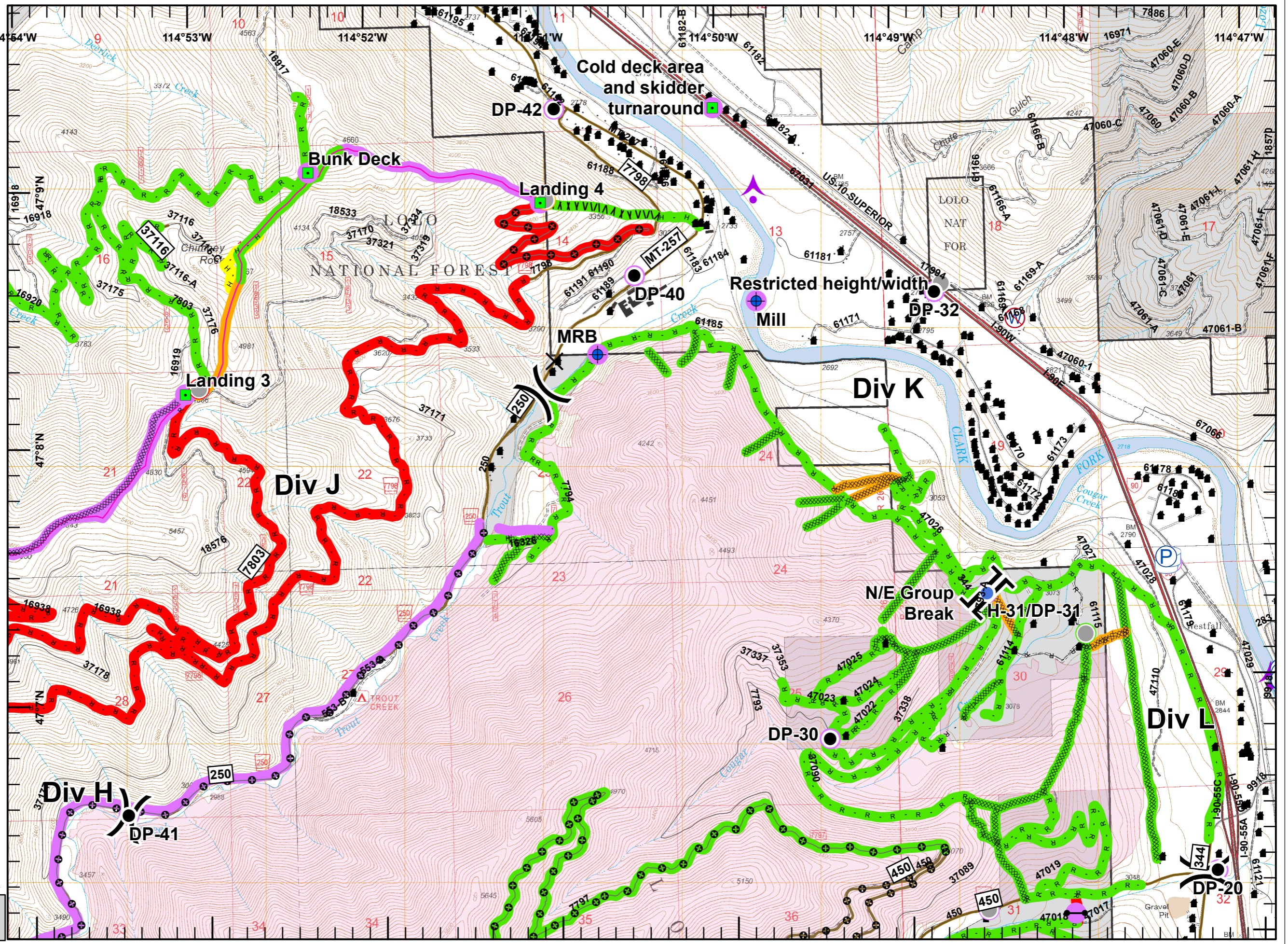
- Completed - Inspected
- Completed - Ready for Inspection
- Repair Needed
- No Repair Needed
- Unknown
- Structure
- Completed Dozer Line
- Completed Hand Line
- Road as Completed Line
- Line Break Completed
- Aerial Retardant Drop
- Fire Travel Roads
- Unknown

Repair Status - Line

- Completed - Inspected
- Completed - Ready for Inspection
- In Progress
- Repair Needed
- No Repair Needed
- Unknown
- Wildfire Daily Fire Perimeter
- Closure
- Dip Site
- Drop Point
- Gate
- Helispot
- Landmark
- Restricted Water Source
- Division Break
- Bridges

0 0.1 0.2 0.3 0.4 0.5 Miles

NAD 83
 UTM Zone 11
 GMK - NR WMT
 9/6/2017
 1630



**Sunrise
IAP Map**
 MT-LNF-001336
 9/6/2017
 Day Shift
 Approx. 26,190 acres
 as of 9/6/2017 @ 1630 hrs.
 Page 2 of 8


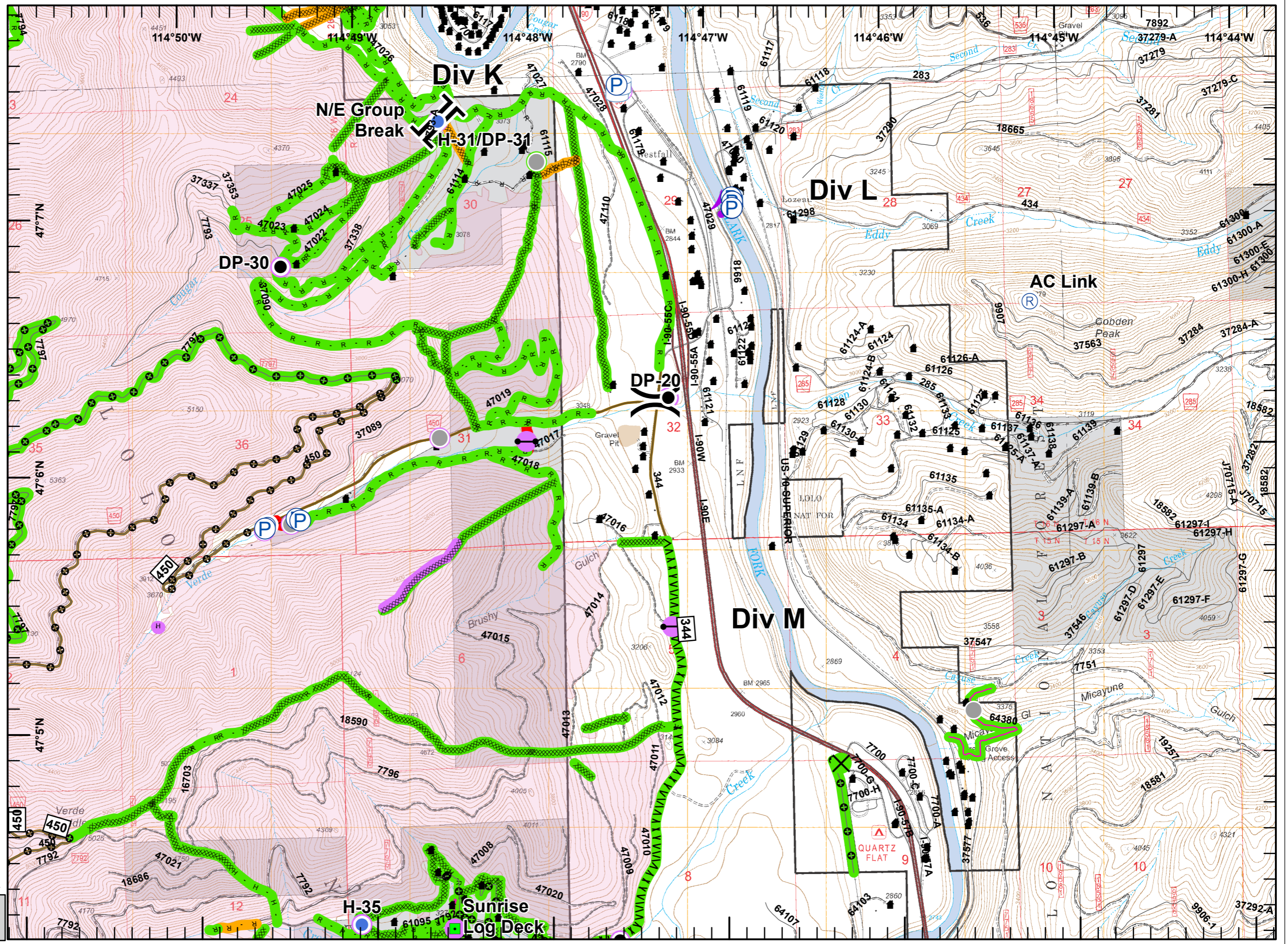
- Legend**
- Repair Status - Point**
- Completed - Inspected
 - Unknown
 - Structure
 - XXXXX Completed Dozer Line
 - H Completed Hand Line
 - R Road as Completed Line
 - /// Line Break Completed
 - Aerial Retardant Drop
 - ⊕ Fire Travel Roads
 - ⊖ Unknown
- Repair Status - Line**
- Completed - Inspected
 - Completed - Ready for Inspection
 - Repair Needed
 - No Repair Needed
 - Unknown
 - ▭ Wildfire Daily Fire Perimeter
 - X Closure
 - Drop Point
 - ⊖ Gate
 - ⊕ Helispot
 - Landmark
 - Ⓡ Repeater
 - Ⓦ Water Source
 -) Division Break
 - || Branch Break

Miles

0 0.1 0.2 0.3 0.4 0.5

NAD 83
 UTM Zone 11

GMK - NR WMT
 9/6/2017
 1630

Legend

Repair Status - Point

- Completed - Inspected
- Repair Needed
- No Repair Needed
- Unknown

Structure

- Completed Dozer Line
- Completed Hand Line
- Road as Completed Line
- Line Break Completed
- Completed Plow Line

Aerial Retardant Drop

- Fire Travel Roads
- Unknown

Repair Status - Line

- Completed - Inspected
- Completed - Ready for Inspection
- Repair Needed
- No Repair Needed
- Unknown

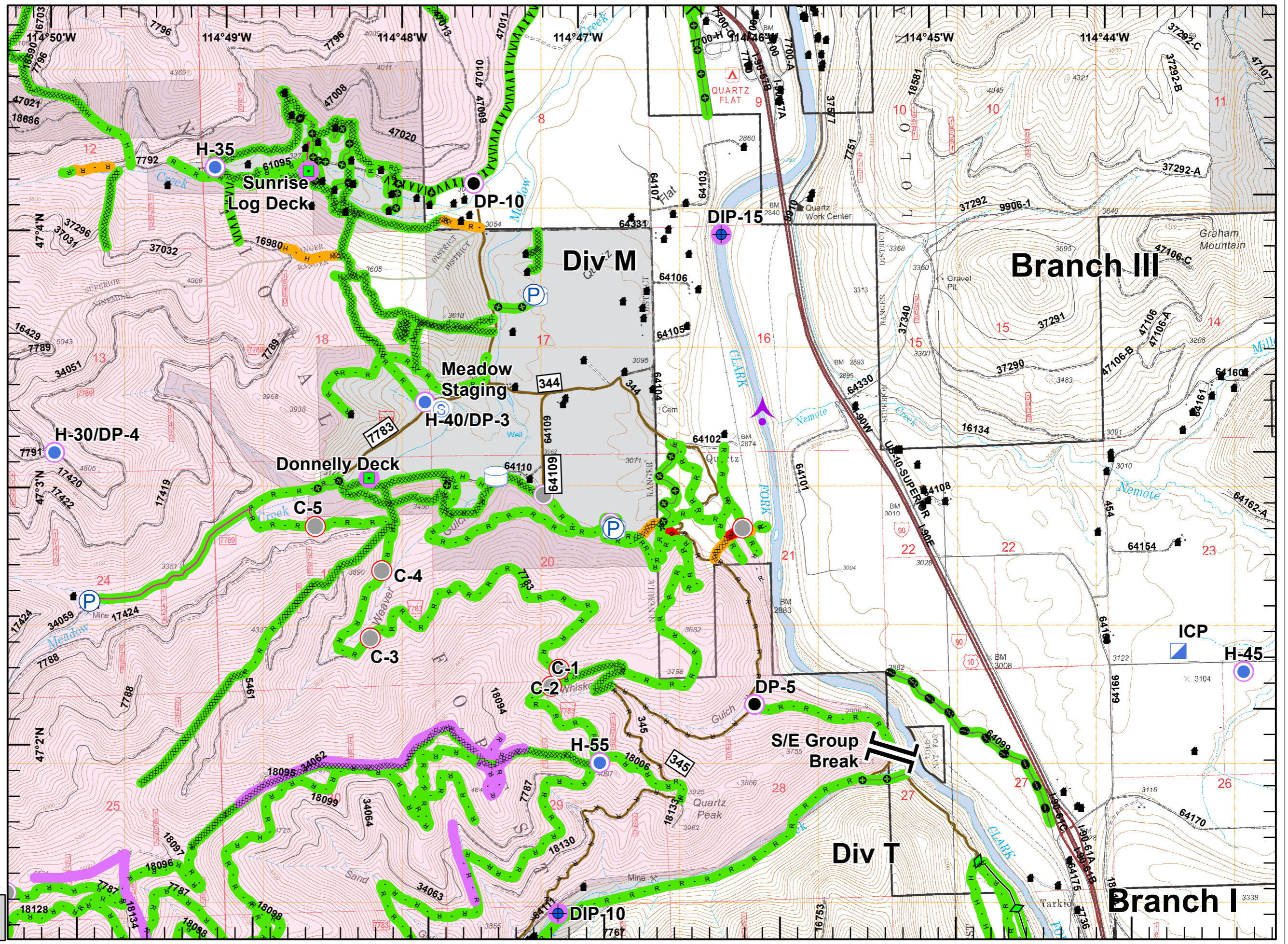
Wildfire Daily Fire Perimeter

- Closure
- Dip Site
- Drop Point
- Helispot
- Incident Command Post
- Landmark
- Staging Area
- Branch Break

Miles

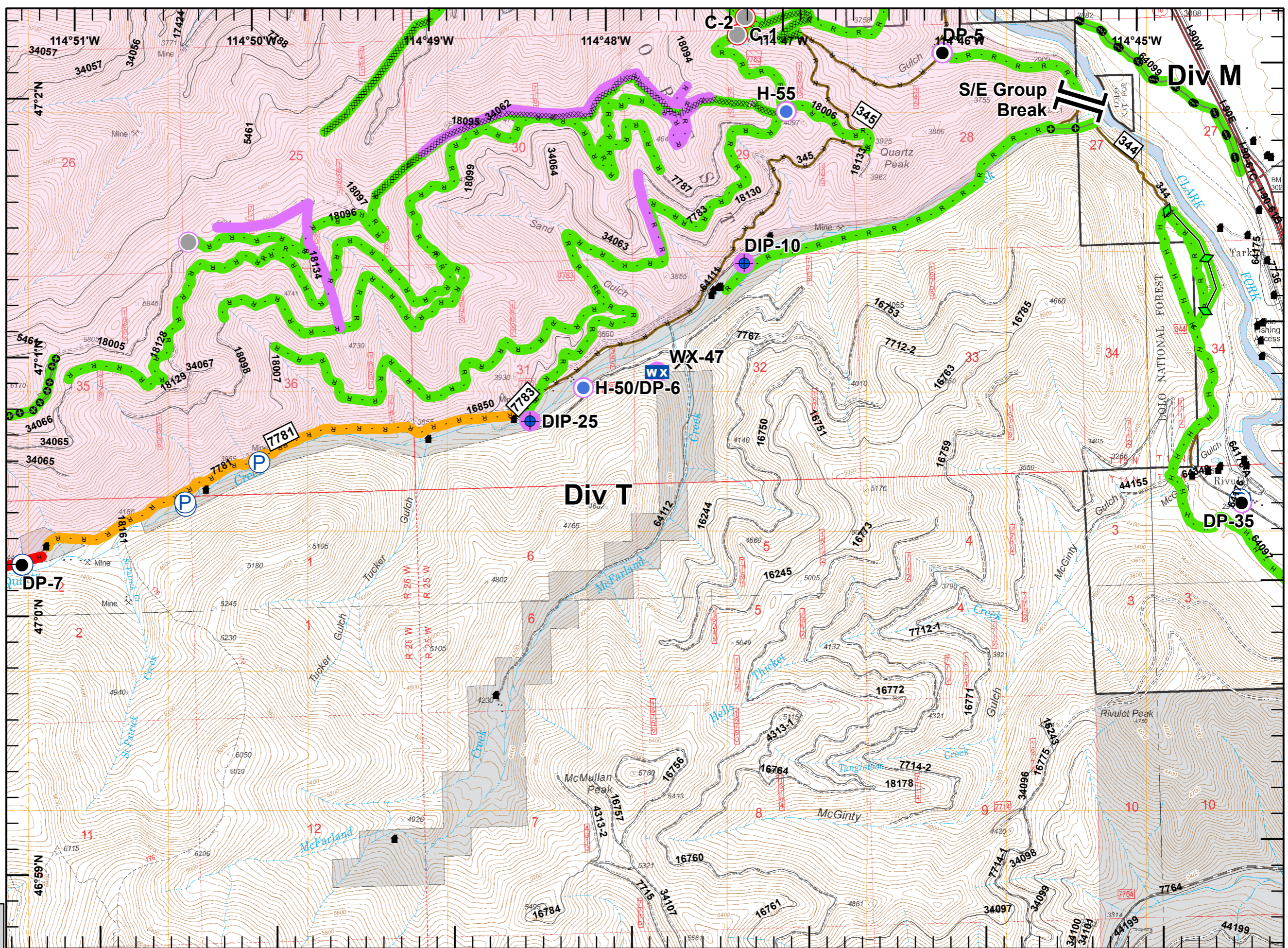
0 0.1 0.2 0.3 0.4 0.5

NAD 83
 UTM Zone 11
 GMK - NR WMT
 9/6/2017
 1630



**Sunrise
IAP Map**
 MT-LNF-001336
 9/6/2017
 Day Shift
 Approx. 26,190 acres
 as of 9/6/2017 @ 1630 hrs.
 Page 4 of 8

- Legend**
- Repair Status - Point**
- Repair Needed
 - Unknown
 - Structure
 - XXXXX Completed Dozer Line
 - H - Completed Hand Line
 - R - Road as Completed Line
 - ◆ Completed Plow Line
- Aerial Retardant Drop**
- ⊕ Fire Travel Roads
- Repair Status - Line**
- ▬ Completed - Inspected
 - ▬ Completed - Ready for Inspection
 - ▬ Repair Needed
 - ▬ Unknown
 - Wildfire Daily Fire Perimeter
 - X Closure
 - Dip Site
 - Drop Point
 - Helispot
 - WX Mobile Weather Unit
 - Branch Break



Miles
 0 0.1 0.2 0.3 0.4 0.5

NAD 83
 UTM Zone 11

GMK - NR WMT
 9/6/2017
 1630

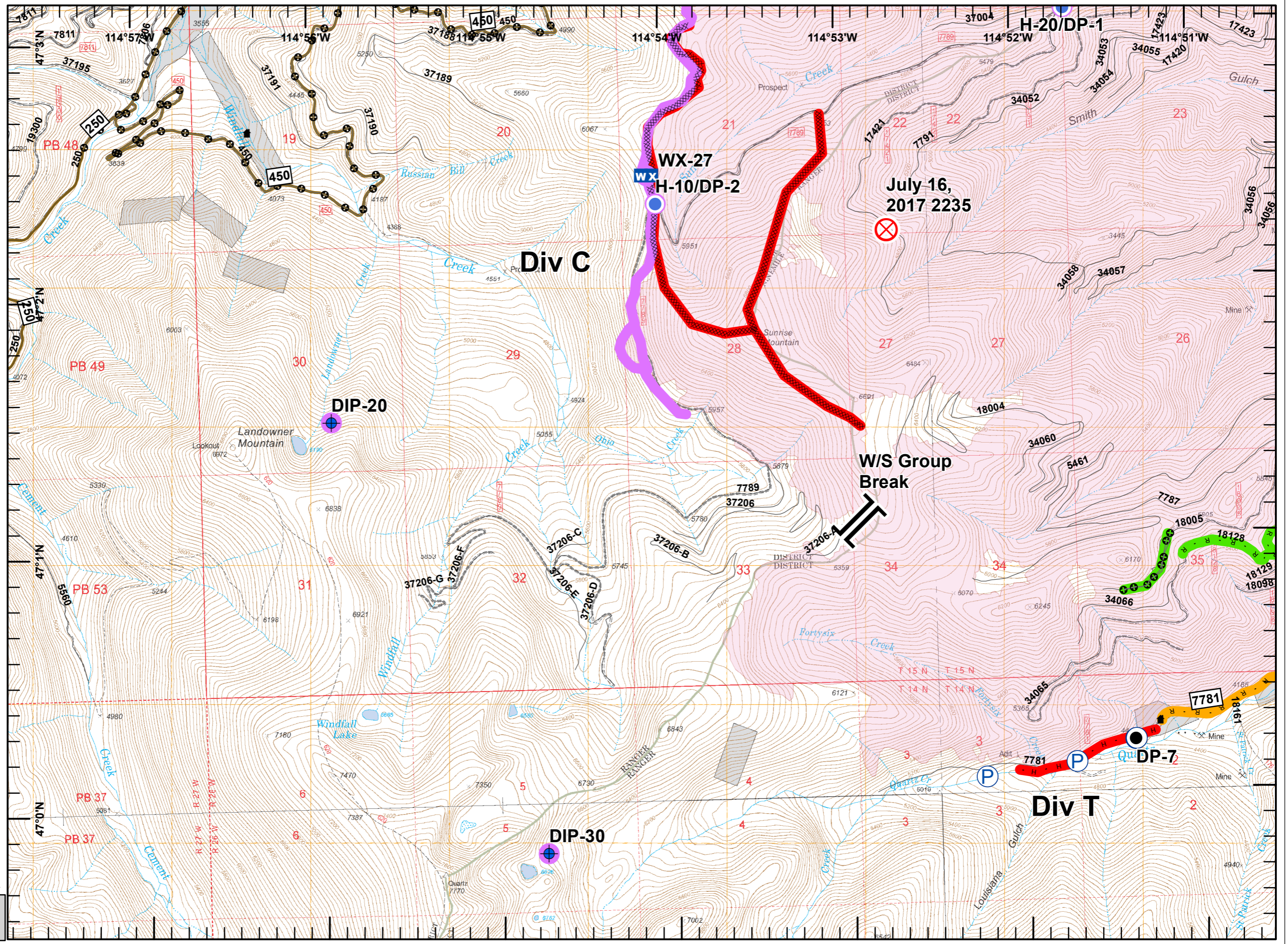
**Sunrise
IAP Map**
 MT-LNF-001336
 9/6/2017
 Day Shift
 Approx. 26,190 acres
 as of 9/6/2017 @ 1630 hrs.
 Page 5 of 8

- Legend**
- Repair Status - Point**
- Repair Needed
 - Unknown
 - Structure
 - Completed Dozer Line
 - Completed Hand Line
 - Road as Completed Line
 - Aerial Retardant Drop
 - Fire Travel Roads
- Repair Status - Line**
- Completed - Inspected
 - Completed - Ready for Inspection
 - Repair Needed
 - No Repair Needed
 - Unknown
 - Wildfire Daily Fire Perimeter
 - Dip Site
 - Drop Point
 - Fire Origin
 - Helispot
 - Mobile Weather Unit
 - Branch Break

Miles
 0 0.1 0.2 0.3 0.4 0.5

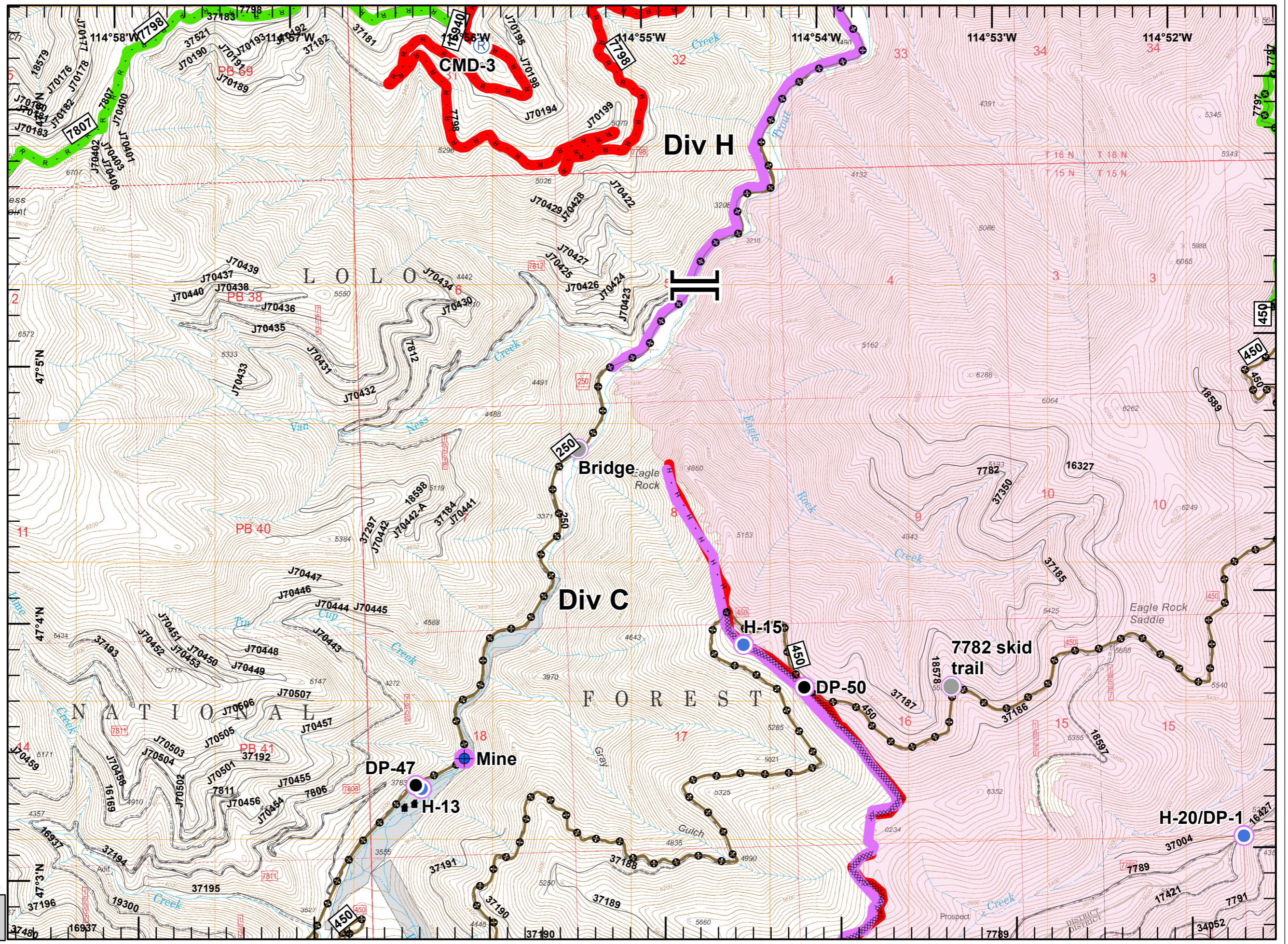
NAD 83
 UTM Zone 11

GMK - NR WMT
 9/6/2017
 1630



**Sunrise
IAP Map**
 MT-LNF-001336
 9/6/2017
 Day Shift
 Approx. 26,190 acres
 as of 9/6/2017 @ 1630 hrs.
 Page 6 of 8

- Legend**
- Repair Status - Point**
- No Repair Needed
 - Unknown
 - Structure
 - Completed Dozer Line
 - Completed Hand Line
 - Road as Completed Line
- Aerial Retardant Drop**
- Fire Travel Roads
- Repair Status - Line**
- Completed - Inspected
 - Repair Needed
 - No Repair Needed
 - Unknown
 - Wildfire Daily Fire Perimeter
- Dip Site
 - Drop Point
 - Helispot
 - Repeater
 - Branch Break

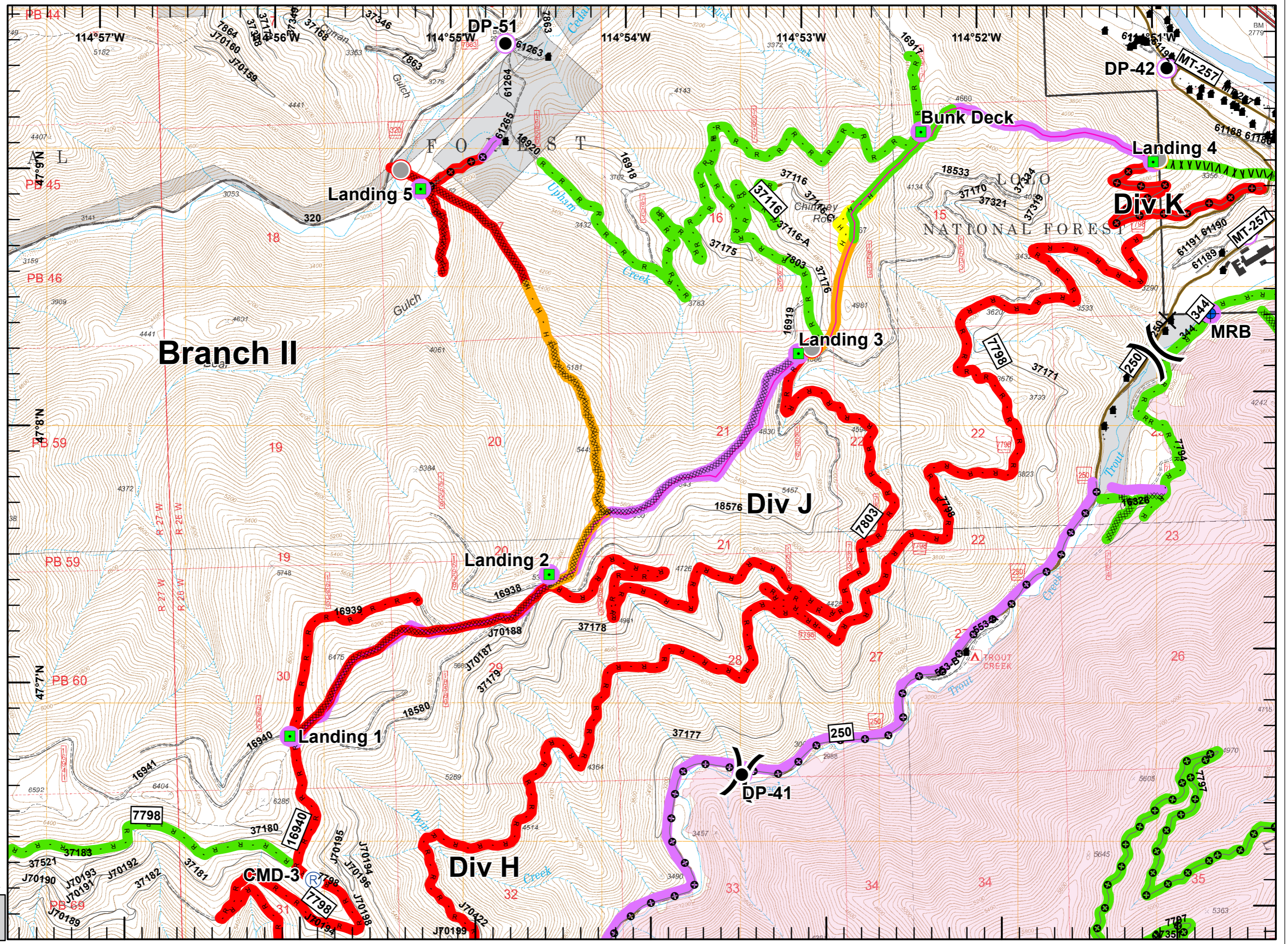


Miles
 0 0.1 0.2 0.3 0.4 0.5

NAD 83
 UTM Zone 11

GMK - NR WMT
 9/6/2017
 1630

- Legend**
- Repair Status - Point**
- Completed - Ready for Inspection
 - Repair Needed
 - Unknown
 - Structure
 - Completed Dozer Line
 - Completed Hand Line
 - Road as Completed Line
 - Line Break Completed
 - Aerial Retardant Drop
 - Fire Travel Roads
 - Unknown
- Repair Status - Line**
- Completed - Inspected
 - Completed - Ready for Inspection
 - In Progress
 - Repair Needed
 - No Repair Needed
 - Unknown
 - Wildfire Daily Fire Perimeter
 - Closure
 - Dip Site
 - Drop Point
 - Landmark
 - Repeater
 - Division Break



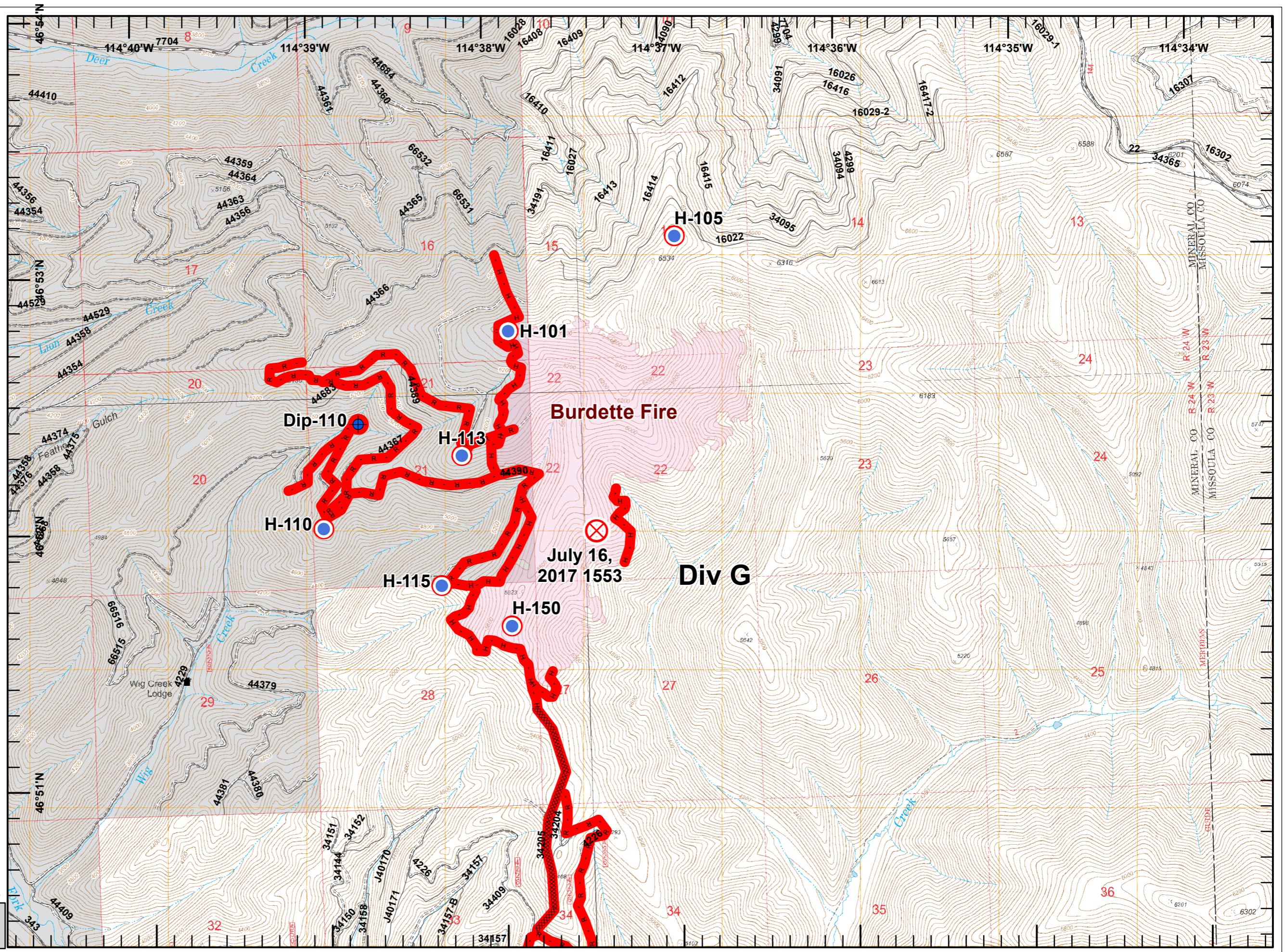
Miles
 0 0.1 0.2 0.3 0.4 0.5

NAD 83
 UTM Zone 11

GMK - NR WMT
 9/6/2017
 1630


**Sunrise
IAP Map**
 MT-LNF-001336
 9/6/2017
 Day Shift
 Approx. 26,190 acres
 as of 9/6/2017 @ 1630 hrs.
 Page 8 of 8

- Legend**
- Repair Status - Point**
 - Repair Needed
 - No Repair Needed
 -  Structure
 -  Completed Dozer Line
 -  Completed Hand Line
 -  Road as Completed Line
 - Repair Status - Line**
 - Repair Needed
 - Wildfire Daily Fire Perimeter
 -  Dip Site
 -  Fire Origin
 - Helispot



Miles
 0 0.1 0.2 0.3 0.4 0.5

NAD 83
 UTM Zone 11

 GMK - NR WMT
 9/6/2017
 1631