

**Sunrise  
IAP Map**  
 MT-LNF-001336  
 9/7/2017  
 Day Shift  
 Approx. 26,190 acres  
 as of 9/6/2017 @ 01:44 hrs.  
 Page 1 of 8

**Legend**

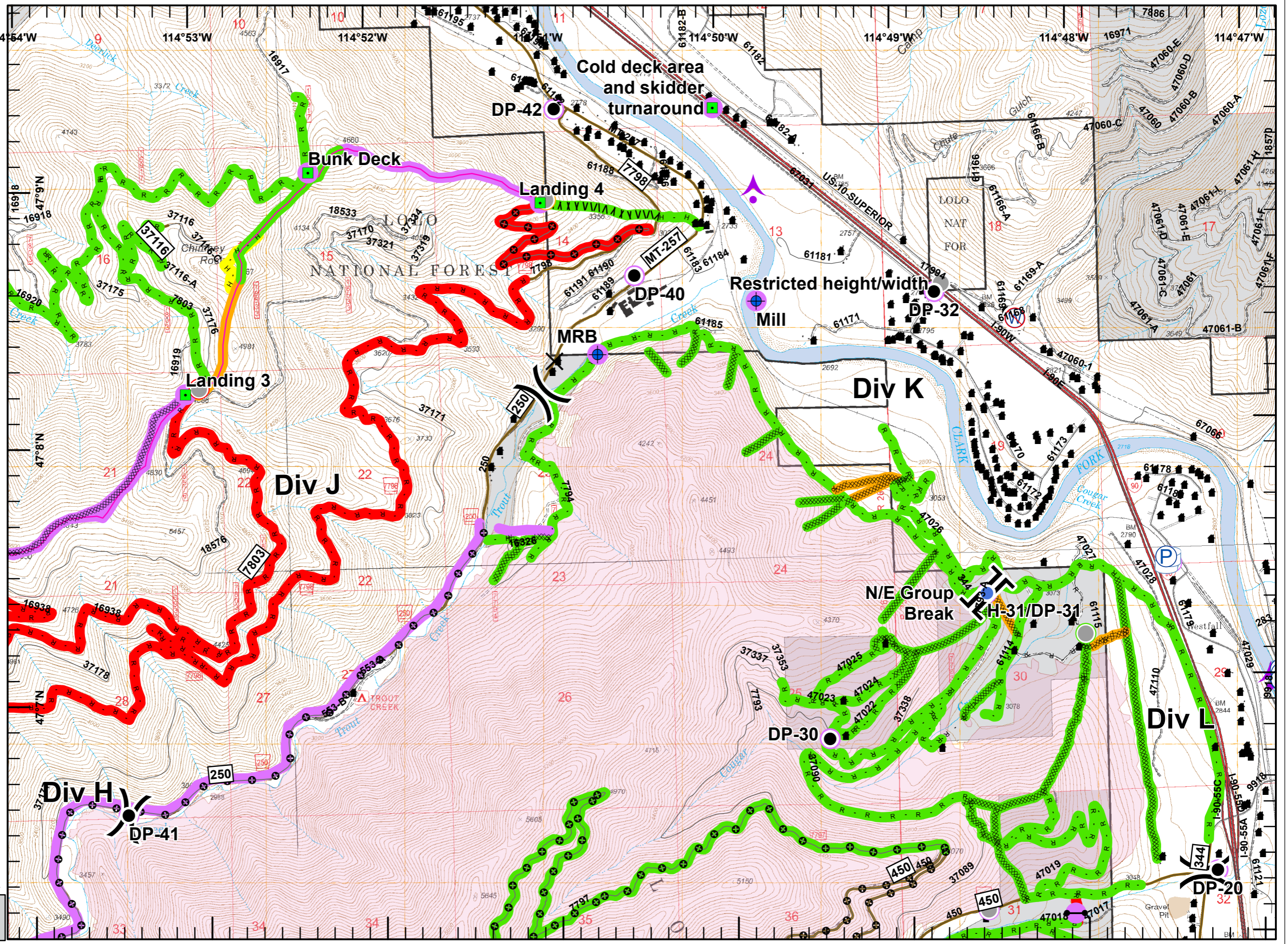
**Repair Status - Point**

- Completed - Inspected
- Completed - Ready for Inspection
- Repair Needed
- No Repair Needed
- Unknown
- Structure
- Completed Dozer Line
- Completed Hand Line
- Road as Completed Line
- Line Break Completed
- Aerial Retardant Drop
- Fire Travel Roads
- Unknown

**Repair Status - Line**

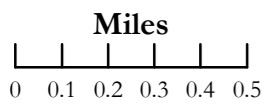
- Completed - Inspected
- Completed - Ready for Inspection
- In Progress
- Repair Needed
- No Repair Needed
- Unknown
- Wildfire Daily Fire Perimeter
- Closure
- Dip Site
- Drop Point
- Gate
- Helispot
- Landmark
- Restricted Water Source
- Division Break
- Miles

NAD 83  
 UTM Zone 11  
 GMK - NR WMT  
 9/6/2017  
 2209

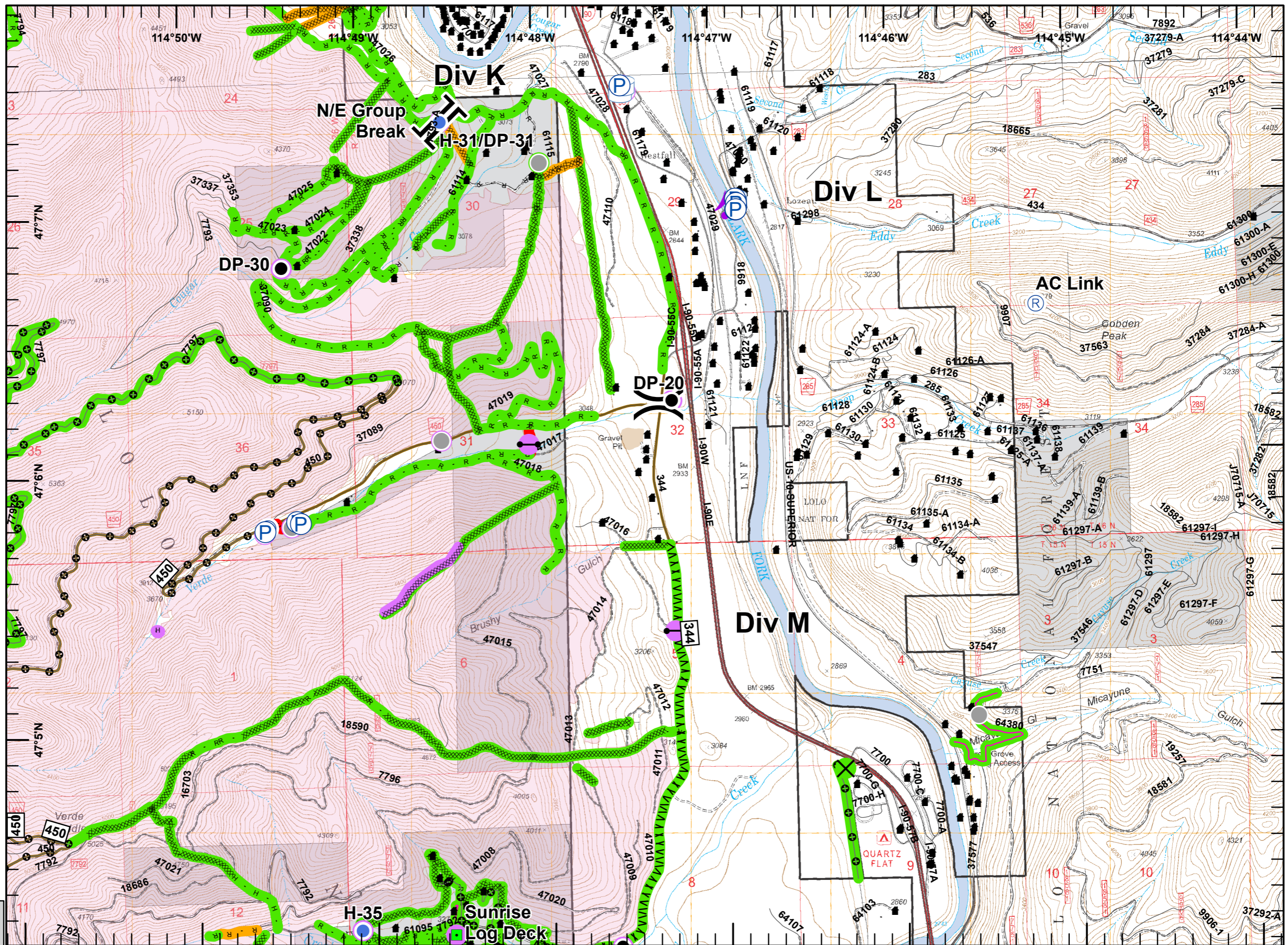


**Sunrise  
IAP Map**  
 MT-LNF-001336  
 9/7/2017  
 Day Shift  
 Approx. 26,190 acres  
 as of 9/6/2017 @ 01:44 hrs.  
 Page 2 of 8

- Legend**
- Repair Status - Point**
- Completed - Inspected
  - Unknown
  - Structure
  - XXXXX Completed Dozer Line
  - H Completed Hand Line
  - R Road as Completed Line
  - /// Line Break Completed
  - Aerial Retardant Drop
  - ⊕ Fire Travel Roads
  - Unknown
- Repair Status - Line**
- Completed - Inspected
  - Completed - Ready for Inspection
  - Repair Needed
  - No Repair Needed
  - Unknown
  - ▭ Wildfire Daily Fire Perimeter
  - ✕ Closure
  - Drop Point
  - ⊖ Gate
  - ⊕ Helispot
  - Landmark
  - Ⓡ Repeater
  - Ⓜ Water Source
  - ) Division Break
  - || Branch Break



NAD 83  
 UTM Zone 11  
 GMK - NR WMT  
 9/6/2017  
 2209



**Legend**

**Repair Status - Point**

- Completed - Inspected
- Repair Needed
- No Repair Needed
- Unknown

**Structure**

- Completed Dozer Line
- Completed Hand Line
- Road as Completed Line
- Line Break Completed
- Completed Plow Line

**Aerial Retardant Drop**

- Fire Travel Roads
- Unknown

**Repair Status - Line**

- Completed - Inspected
- Completed - Ready for Inspection
- Repair Needed
- No Repair Needed
- Unknown

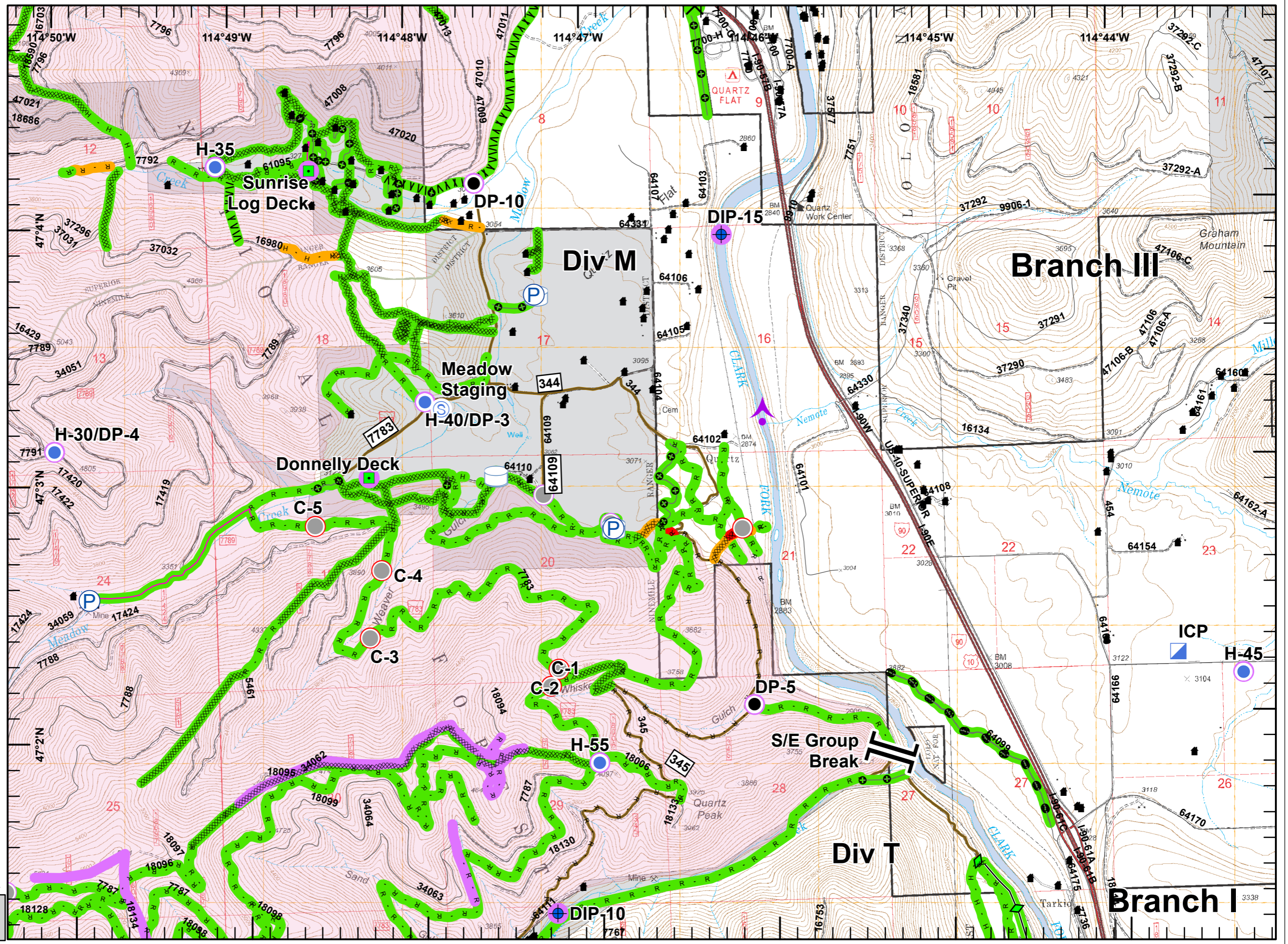
**Wildfire Daily Fire Perimeter**

- Closure
- Dip Site
- Drop Point
- Helispot
- Incident Command Post
- Landmark
- Staging Area
- Branch Break

**Miles**

0 0.1 0.2 0.3 0.4 0.5

NAD 83  
 UTM Zone 11  
 GMK - NR WMT  
 9/6/2017  
 2209




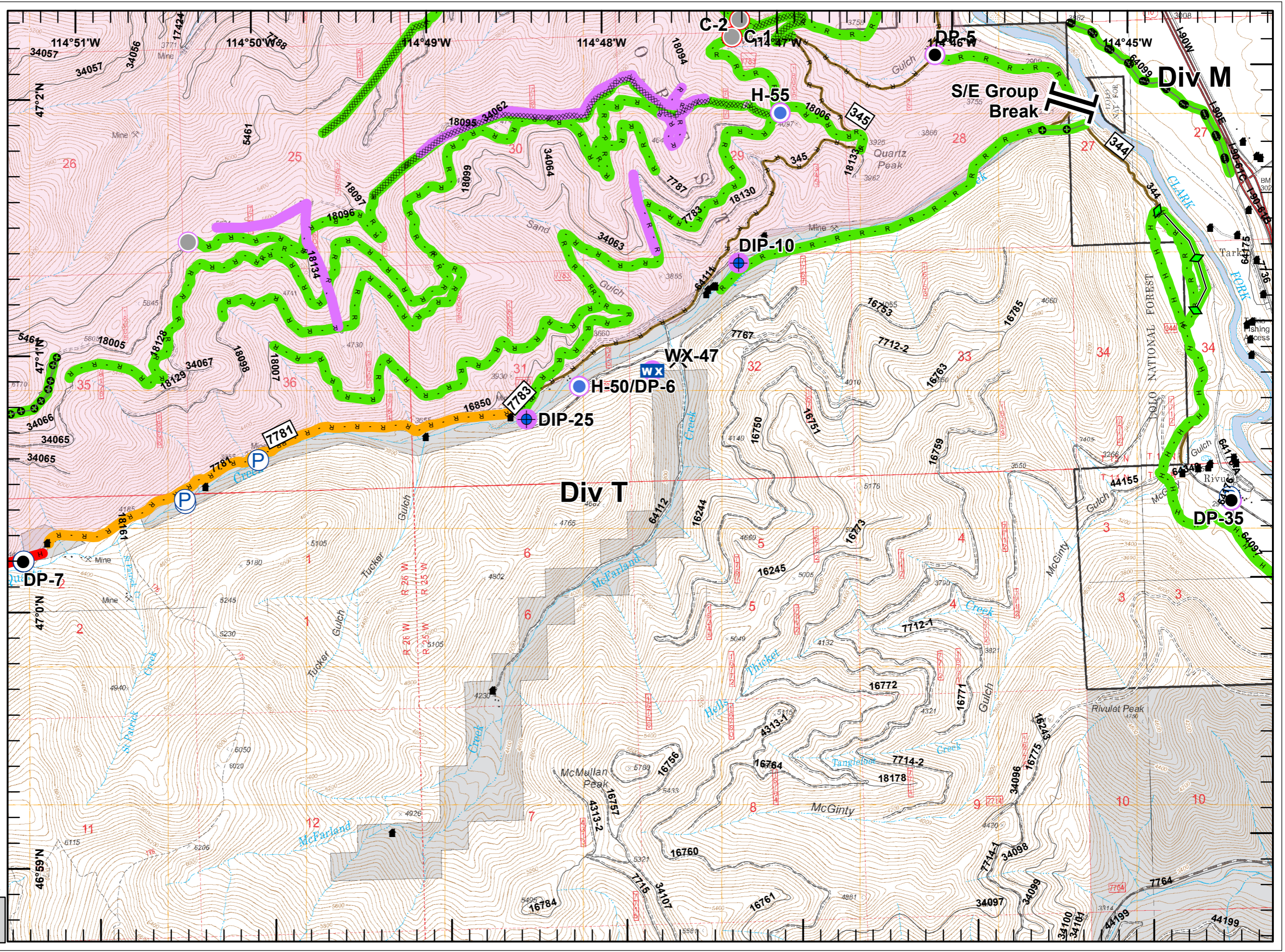
**Sunrise  
IAP Map**  
 MT-LNF-001336  
 9/7/2017  
 Day Shift  
 Approx. 26,190 acres  
 as of 9/6/2017 @ 01:44 hrs.  
 Page 4 of 8

- Legend**
- Repair Status - Point**
- Repair Needed
  - Unknown
  - Structure
  - XXXXX Completed Dozer Line
  - H - Completed Hand Line
  - R - Road as Completed Line
  - ◆ Completed Plow Line
  - ⊕ Aerial Retardant Drop
  - ⊕ Fire Travel Roads
- Repair Status - Line**
- ▬ Completed - Inspected
  - ▬ Completed - Ready for Inspection
  - ▬ Repair Needed
  - ▬ Unknown
  - ▭ Wildfire Daily Fire Perimeter
  - X Closure
  - Dip Site
  - Drop Point
  - Helispot
  - WX Mobile Weather Unit
  - ▭ Branch Break

**Miles**  
 0 0.1 0.2 0.3 0.4 0.5

NAD 83  
 UTM Zone 11

GMK - NR WMT  
 9/6/2017  
 2209

**Sunrise  
IAP Map**  
**MT-LNF-001336**  
 9/7/2017  
 Day Shift  
 Approx. 26,190 acres  
 as of 9/6/2017 @ 01:44 hrs.  
 Page 5 of 8

**Legend**

**Repair Status - Point**

- Repair Needed
- No Repair Needed
- Unknown
- Structure
- XXXXX Completed Dozer Line
- H - Completed Hand Line
- R - Road as Completed Line
- Aerial Retardant Drop
- ⊕ Fire Travel Roads

**Repair Status - Line**

- █ Completed - Inspected
- █ Completed - Ready for Inspection
- █ Repair Needed
- █ No Repair Needed
- █ Unknown
- █ Wildfire Daily Fire Perimeter

● Dip Site

● Drop Point

⊗ Fire Origin

● Helispot

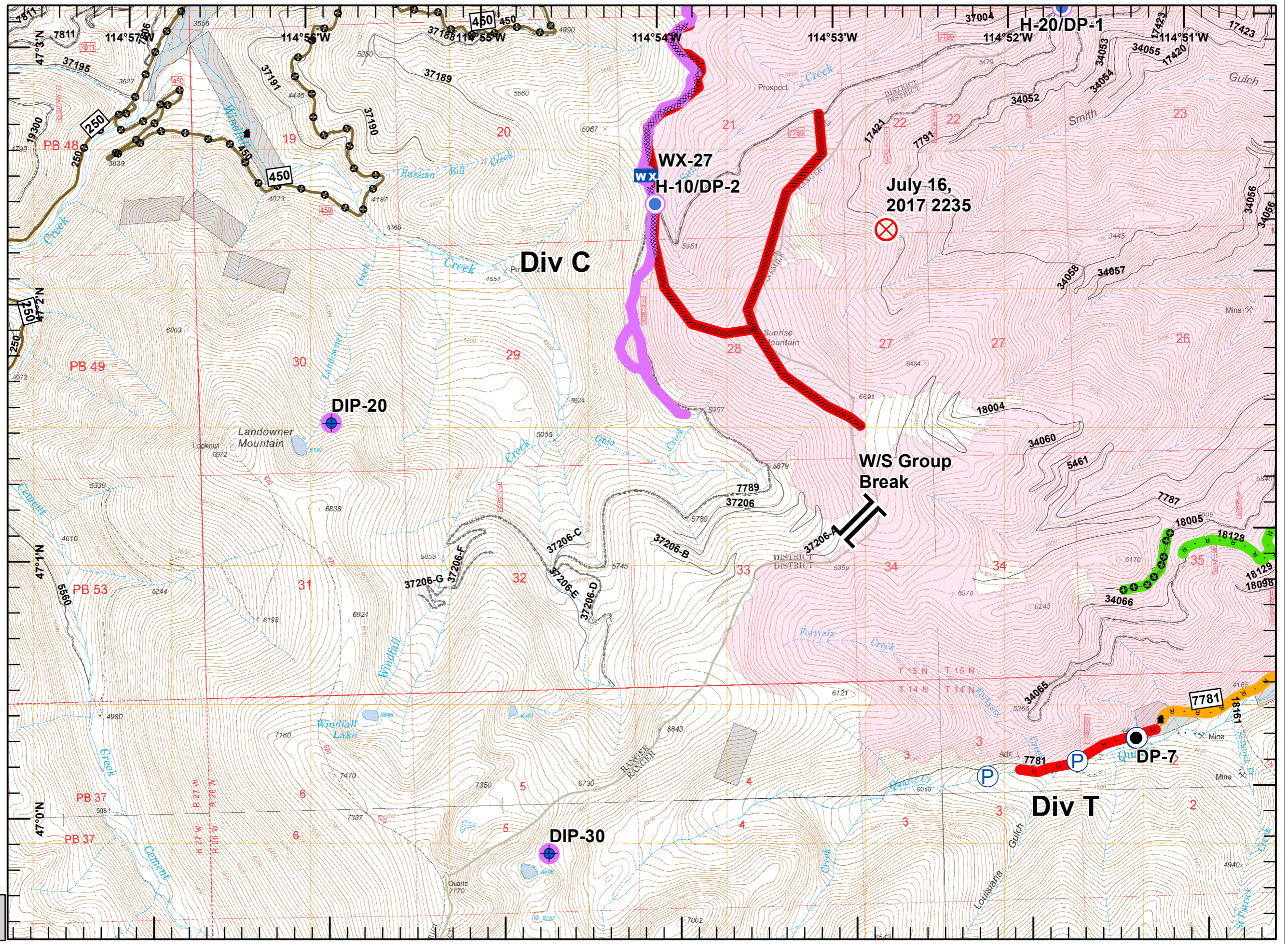
**WX** Mobile Weather Unit

|| Branch Break

Miles  
 0 0.1 0.2 0.3 0.4 0.5

NAD 83  
 UTM Zone 11

GMK - NR WMT  
 9/6/2017  
 2210




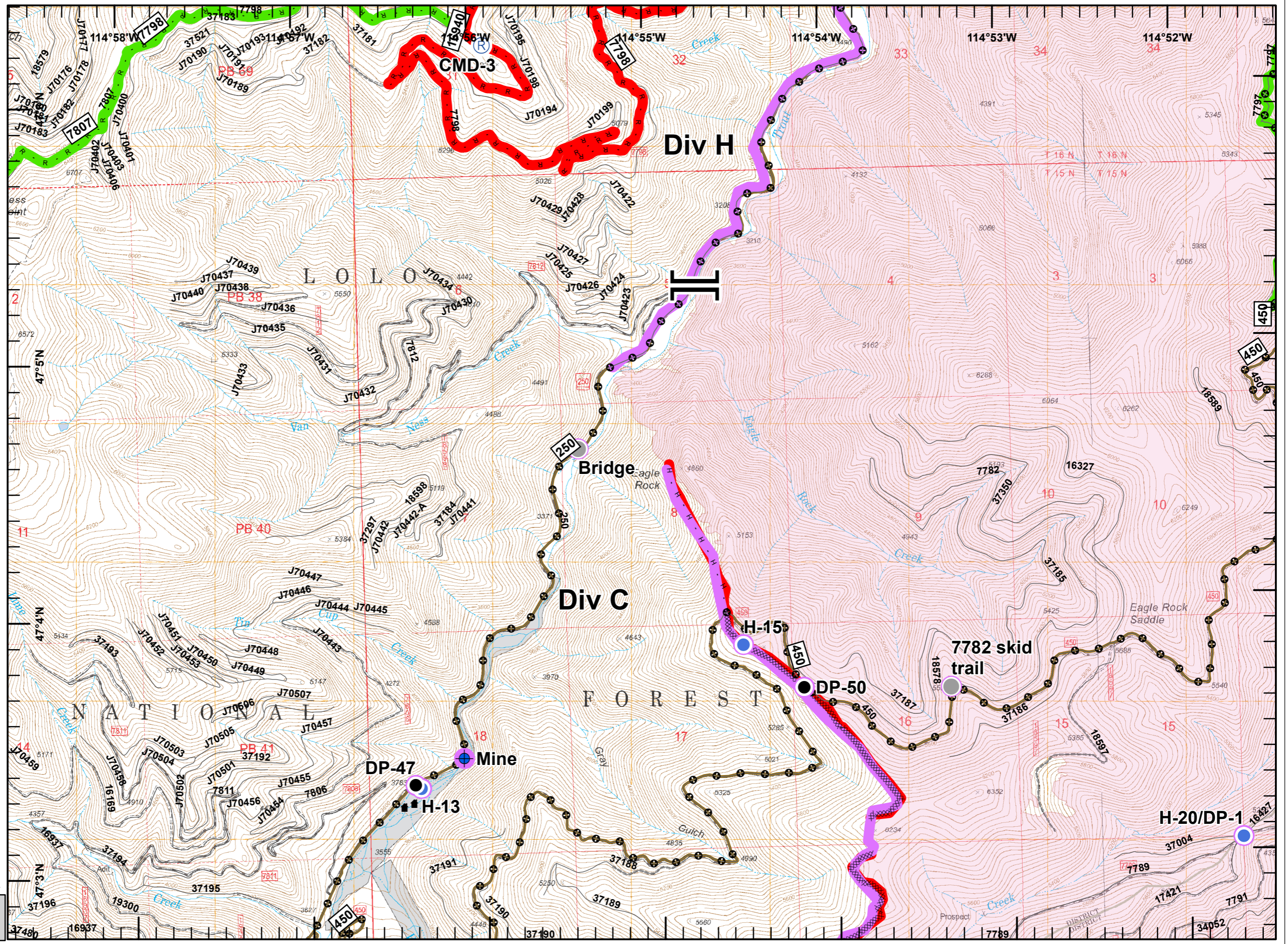
**Sunrise  
IAP Map**  
 MT-LNF-001336  
 9/7/2017  
 Day Shift  
 Approx. 26,190 acres  
 as of 9/6/2017 @ 01:44 hrs.  
 Page 6 of 8

- Legend**
- Repair Status - Point**
- No Repair Needed
  - Unknown
  - Structure
  - Completed Dozer Line
  - Completed Hand Line
  - Road as Completed Line
  - Aerial Retardant Drop
  - Fire Travel Roads
- Repair Status - Line**
- Completed - Inspected
  - Repair Needed
  - No Repair Needed
  - Unknown
  - Wildfire Daily Fire Perimeter
- Dip Site
  - Drop Point
  - Helispot
  - Repeater
  - Branch Break

Miles  
 0 0.1 0.2 0.3 0.4 0.5

NAD 83  
 UTM Zone 11

GMK - NR WMT  
 9/6/2017  
 2210


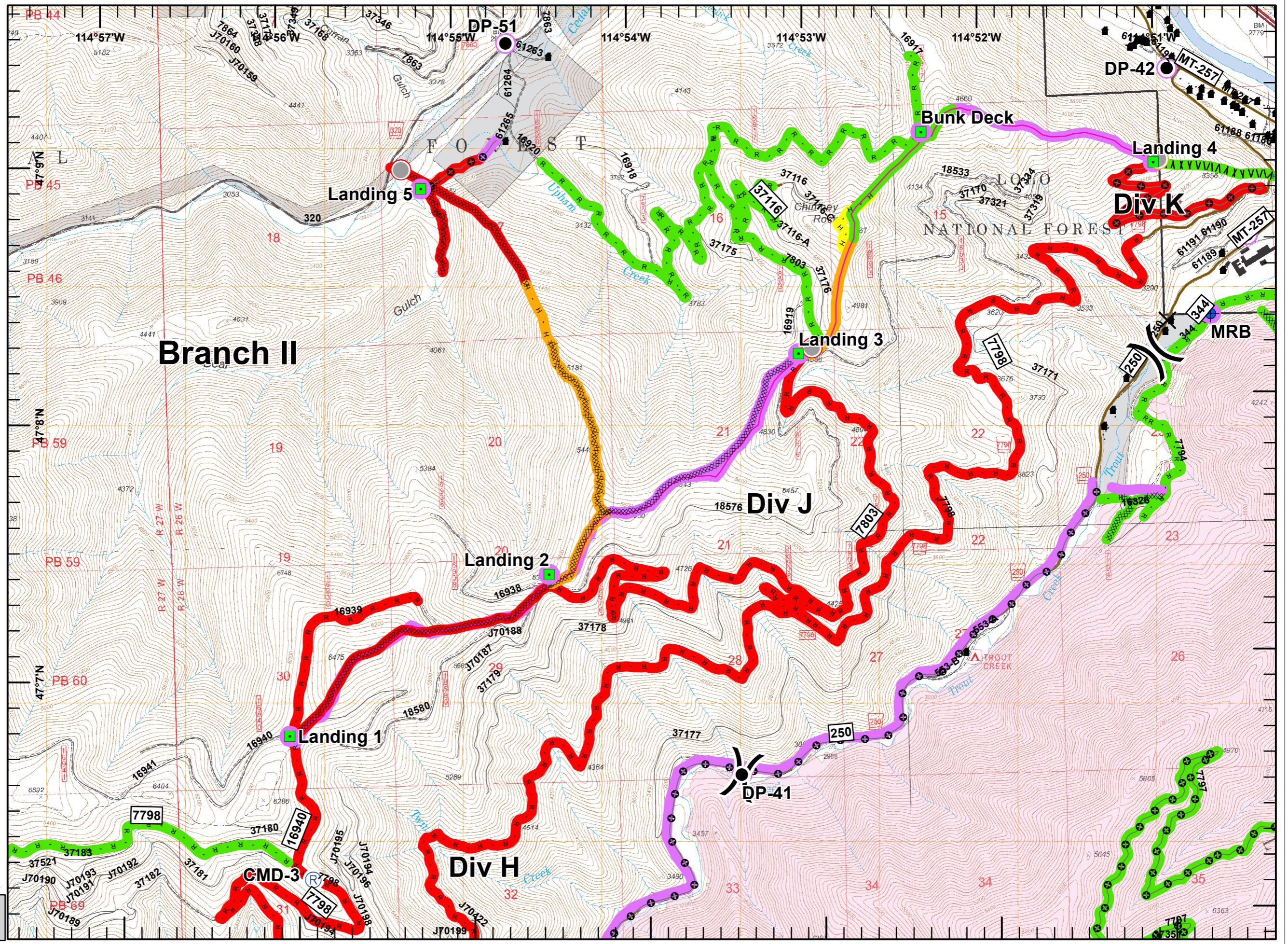
**Sunrise  
IAP Map**  
 MT-LNF-001336  
 9/7/2017  
 Day Shift  
 Approx. 26,190 acres  
 as of 9/6/2017 @ 01:44 hrs.  
 Page 7 of 8

- Legend**
- Repair Status - Point**
- Completed - Ready for Inspection
  - Repair Needed
  - Unknown
  - Structure
  - Completed Dozer Line
  - Completed Hand Line
  - Road as Completed Line
  - Line Break Completed
  - Aerial Retardant Drop
  - Fire Travel Roads
  - Unknown
- Repair Status - Line**
- Completed - Inspected
  - Completed - Ready for Inspection
  - In Progress
  - Repair Needed
  - No Repair Needed
  - Unknown
  - Wildfire Daily Fire Perimeter
  - Closure
  - Dip Site
  - Drop Point
  - Landmark
  - Repeater
  - Division Break

Miles  
 0 0.1 0.2 0.3 0.4 0.5

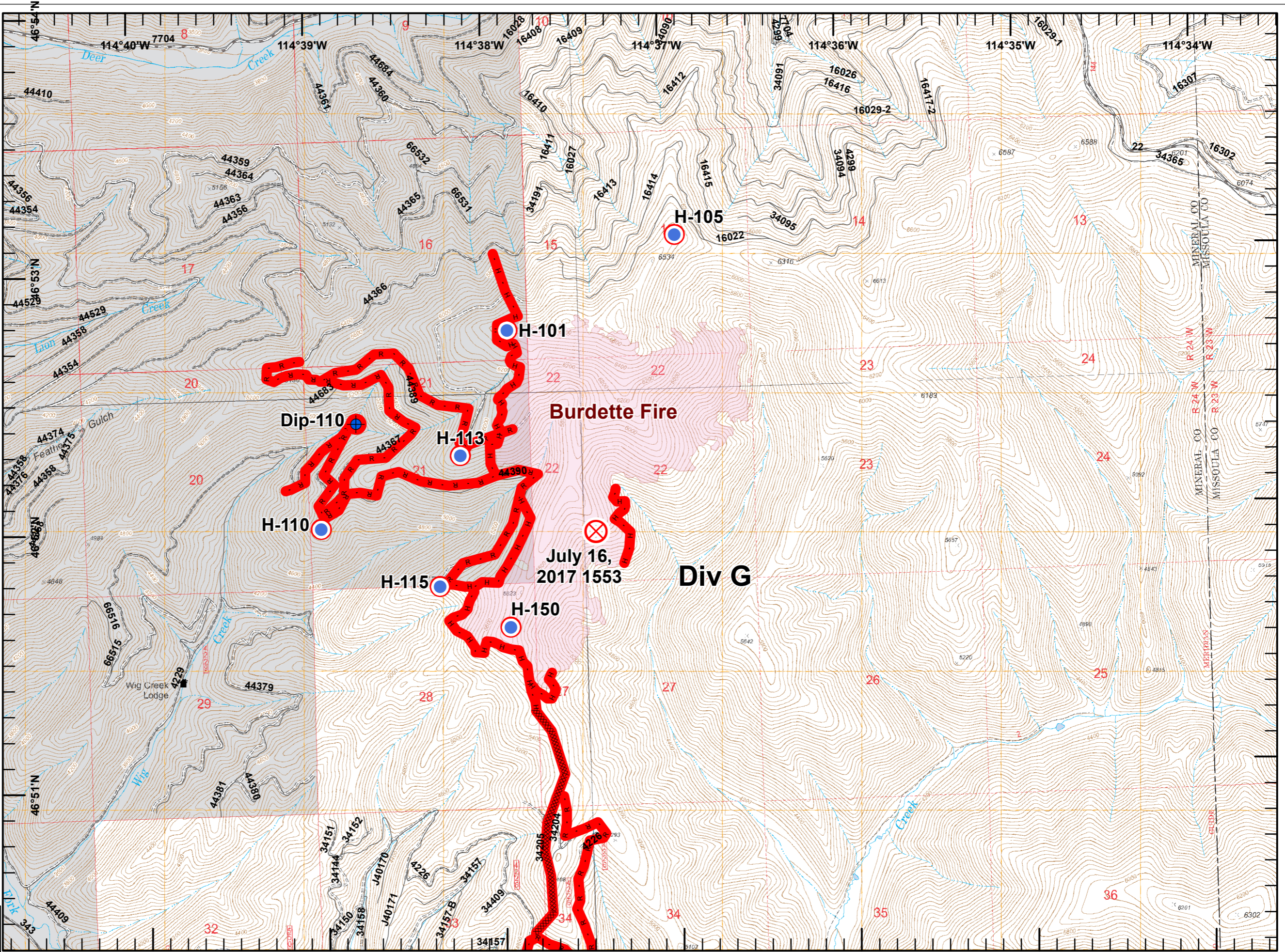
NAD 83  
 UTM Zone 11

GMK - NR WMT  
 9/6/2017  
 2210


**Sunrise  
IAP Map**  
 MT-LNF-001336  
 9/7/2017  
 Day Shift  
 Approx. 26,190 acres  
 as of 9/6/2017 @ 01:44 hrs.  
 Page 8 of 8

- Legend**
- Repair Status - Point**
  - Repair Needed
  - No Repair Needed
  -  Structure
  -  Completed Dozer Line
  -  Completed Hand Line
  -  Road as Completed Line
  - Repair Status - Line**
  - Repair Needed
  - Wildfire Daily Fire Perimeter
  -  Dip Site
  -  Fire Origin
  - Helispot



**Miles**  
 0 0.1 0.2 0.3 0.4 0.5

NAD 83  
 UTM Zone 11

 **GMK - NR WMT**  
 9/6/2017  
 2210